

Tigh na Creag



Contact Details:

Daytime Phone: 01244 356890

Portree
The Highlands
IV48 8TD
Scotland

£ 446.00 - £ 1,335.00 per week



This is a very well presented detached cottage situated on a hillside on the magical Isle of Skye, 12 miles from Portree and can sleep four people in two bedrooms.

Facilities:

- **COVID-19:**
Advance booking essential, Capacity limit, COVID-19 measures in place, COVID-19 refund and cancellation policy in place, COVID-19 risk assessment completed, Deep cleaning between visitors
- **Communications:**
Broadband Internet
- **Entertainment:**
TV
- **Kitchen:**
Cooker, Dishwasher, Fridge
- **Laundry:**
Washing Machine
- **Price Included:**
Linen, Towels
- **Special:**
Cots Available

Room Details:

Sleeps: 4

1 Double Room

1 Twin Room

2 Bathrooms

About Portree and The Highlands

The charming town of Portree, set around its natural harbour on the ruggedly beautiful Isle of Skye, boasts a wide range of shops, hotels and restaurants amongst its winding streets. This quiet, tranquil town offers a large variety of cultural attractions too. The Aros Centre, with its programme of concerts, theatre and cinema is well worth visiting and sports enthusiasts will be well catered for by the wealth of sea kayaking, rock-climbing and a good choice of well-marked walks across the island. The spectacular rock formations of Trotternish Ridge stretch for miles along the thirty-one kilometres of continuous cliffs, showing widely diverse pinnacles and forms. With the imposing Dunvegan castle, and the Talisker Distillery Visitor Centre, there's something for everyone to see on this very special island.

Recommended Attractions

1. Goodwood

Art Gallery, Historic Buildings and Monuments, Nature Reserve, Parks Gardens and Woodlands, Tours and Trips, Visitor Centres and Museums, Childrens Attractions, Zoos Farms and Wildlife Parks, Bistros and Brasseries, Cafes Coffee Shops and Tearooms, Horse Riding and Pony Trekking, Shooting and Fishing, Walking and Climbing



Motor circuit, Stately Home, Racecourse, Aerodrome, Forestry, Organic Farm Shop, Festival of Speed, Goodwood Revival

Chichester, PO18 0PX, West Sussex, England

2. Goodwood Races

Festivals and Events, Horse Racing



Under the family of the Duke of Richmond, Goodwood Races sits only five miles north of the town of Chichester.

Chichester, PO18 0PS, West Sussex, England

3. Chichester Cathedral

Historic Buildings and Monuments, Tours and Trips



This 900 Year Old Cathedral has been visited millions of times by people of all faiths and denominations.

Chichester, PO19 1PX, West Sussex, England

4. Petworth House

Historic Buildings and Monuments, Parks Gardens and Woodlands



Petworth House is a grade 1 listed building from the 17th Century. Set in an idyllic 700-acre Deer Park, it makes a great day out for viewing the historic building and walking in the verdant park surrounding it.

Petworth, GU28 0AE, West Sussex, England

5. Bucklers Hard

Visitor Centres and Museums, Childrens Attractions



Bucklers Hard is a 18th century maritime village which is situated on the Beaulieu River, it has a stunning Marina and plenty to see in the village.

Brockenhurst, SO42 7XB, Hampshire, England

6. Beaulieu Estate

Historic Buildings and Monuments, Visitor Centres and Museums, Childrens Attractions



Beaulieu is situated in the New Forest National Park, it is the perfect place for a fun day including museums, the historic abbey and the list goes on

Brockenhurst, SO42 7ZN, Hampshire, England

7. Paultons Park

Theme Parks



Paultons Family Theme Park is a great day out, there are a wide selection of rides allowing you to have the most fun and exciting day out.

The New Forest, SO51 6AL, Hampshire, England

8. Dunrobin Castle Golspie Sutherland

Historic Buildings and Monuments, Visitor Centres and Museums



Seat of the Duke of Sutherland. Originally built in 1401 and rebuilt in 1835. Castle Tour and Falconry Displays a Must. Open between April and Oct

Golspie, KW10 6RS, The Highlands, Scotland

"Castle of fairy tales which looks dramatic from the sea. Falconry display and museum worth visiting too."

 **Highly Recommended by Tigh na Creag!**

9. Blair Castle

Historic Buildings and Monuments, Parks Gardens and Woodlands, Cafes Coffee Shops and Tearooms



Historic Castle

Blair Atholl, PH18 5TL, Perth and Kinross, Scotland

 **Highly Recommended by Tigh na Creag!**

10. The Scottish Crannog Centre

Historic Buildings and Monuments, Visitor Centres and Museums



Archaeological Open-Air Museum

Kenmore Aberfeldy, PH15 2HY, Perth and Kinross, Scotland

 **Highly Recommended by Tigh na Creag!**

11. Brora golf club

Golf



Brora Golf Club, a traditional links course, designed by James Braid, where little has changed since he left in 1923.

Brora, KW9 6QS, The Highlands, Scotland

"Wonderful Braid course in top 100 best courses UK and Ireland."

Highly Recommended by Tigh na Creag!

12. Enchanted Forest in Perthshire

Festivals and Events, Lochs Lakes and Waterfalls, Parks Gardens and Woodlands, Live Music and Comedy



The Enchanted Forest offers visitors a unique opportunity to experience the outdoors, at night and with spectacular imagery. You will experience a lighting show that is out of this world.

Pitlochry, PH16 5LA, Perth and Kinross, Scotland

Highly Recommended by Tigh na Creag!

13. Balmoral Castle

Historic Buildings and Monuments, Parks Gardens and Woodlands, Visitor Centres and Museums



5 Star visitor attraction set amongst the magnificent scenery of Royal Deeside

Balmoral, AB35 5TB, Aberdeenshire, Scotland

Highly Recommended by Tigh na Creag!

14. The Cross Keys Restaurant in Kippen

Pubs and Bars, Restaurants



Traditional and comfortable inn situated in the village of Kippen, Stirlingshire. We serve food all day from soups to sirloins, with home made pies and puddings to finish. Every Sunday is roast day featuring two types of roast. Children Welcome.

Kippen, FK8 3DN, Stirlingshire, Scotland

Phone: 01786 870293

Highly Recommended by Tigh na Creag!

15. Gloagburn Farm Shop and Coffee Shop near Perth

Cafes Coffee Shops and Tearooms, Shops



The Gloagburn Farm Shop and Café are a local business of high quality offering local produce as well as a café.

Tibbermore, PH1 1QL, Perth and Kinross, Scotland

Highly Recommended by Tigh na Creag!

16. Scone Palace

Historic Buildings and Monuments, Parks Gardens and Woodlands



Former crowning place of the Kings of Scotland, stunning setting in beautiful grounds. A stately home to visit.

Perth, PH2 6BD, Perth and Kinross, Scotland

 Highly Recommended by Tigh na Creag!

17. Scone Palace

Historic Buildings and Monuments, Parks Gardens and Woodlands



Scone Palace occupies a unique position in Scottish History

Perth, PH2 6BD, Perth and Kinross, Scotland

 Highly Recommended by Tigh na Creag!

18. The Black Watch Museum

Visitor Centres and Museums



Regimental Museum of the Proud and Illustrious Black Watch Regiment in Perth Scotland

Perth, PH1 5HR, Perth and Kinross, Scotland

 Highly Recommended by Tigh na Creag!

19. Glamis Castle

Historic Buildings and Monuments



Childhood home of Her Majesty Queen Elisabeth The Queen Mother

Glamis, DD8 1RJ, Angus and Dundee, Scotland

 Highly Recommended by Tigh na Creag!

20. Lundy Island

Beaches, Tours and Trips, Childrens Attractions, Pubs and Bars, Walking and Climbing



Lundy Island and Nature Reserve

Bideford, EX39 2LY, Devon, England

 Highly Recommended by Tigh na Creag!

21. h2outdoor Adventure Activities North Devon

Tours and Trips, Cycling and Mountain Bikes, Horse Riding and Pony Trekking, Sailing and Watersports, Walking and Climbing, Guided Walks, Guided Tours and Day Trips



A fantastic selection of adventure activities in North Devon. Sea kayaking, canoeing, surfing, coasteering, mountain biking, pony trekking & high ropes are just some of the activities we offer. Suitable for children, groups, stag/hen & corporate

Woolacombe, EX34 7BZ, Devon, England

Highly Recommended by Tigh na Creag!

22. Lynton and Barnstaple Railway

Tours and Trips, Cafes Coffee Shops and Tearooms, Railways



A restored narrow gauge steam railway in the Exmoor National Park area of North Devon. One mile of the original 19 miles has so far been re-opened.

Martinhoe Cross, Parracombe, EX31 4RA, Devon, England

Phone: 01598 763487

Highly Recommended by Tigh na Creag!

23. Horse riding holidays in North Devon Croyde

Childrens Attractions, Horse Riding and Pony Trekking



Roylands riding stables cater for all abilities and offer horse riding holidays.

Croyde, EX33, Devon, England

Highly Recommended by Tigh na Creag!

24. Saunton Sands Beach

Beaches, Childrens Attractions, Sailing and Watersports



3 miles long sandy beach, ideal for families and popular with surfers

Saunton, EX33, Devon, England

Highly Recommended by Tigh na Creag!

25. Dunster Castle

Historic Buildings and Monuments, Parks Gardens and Woodlands

National Trust Property with subtropical terraced garden

Dunster, TA24 6SL, Somerset, England



 **Highly Recommended by Tigh na Creag!**

26. Westward Ho! Beach

Beaches, Childrens Attractions



Over 2 miles of sandy beach in North Devon

Westward Ho, TQ1 , Devon, England

 **Highly Recommended by Tigh na Creag!**

27. The Milky Way Adventure Park

Visitor Centres and Museums, Childrens Attractions, Indoor and Outdoor Play Areas



North Devon's largest undercover family attraction.

Bideford, EX39 5RY, Devon, England

 **Highly Recommended by Tigh na Creag!**

28. Quince Honey Farm

Visitor Centres and Museums, Childrens Attractions, Zoos Farms and Wildlife Parks, Shops



World famous honey farm - the largest in the country

South Molton, EX36 3AZ, Devon, England

 **Highly Recommended by Tigh na Creag!**

29. Exmoor National Park

Parks Gardens and Woodlands, Horse Riding and Pony Trekking, Shooting and Fishing, Walking and Climbing



Beautiful national park spanning Somerset and Devon

Dulverton, TA22 9HL, Somerset, England

 **Highly Recommended by Tigh na Creag!**

30. Tintagel and Tintagel Castle

Beaches, Historic Buildings and Monuments, Lochs Lakes and Waterfalls, Parks Gardens and Woodlands, Visitor Centres and Museums, Childrens Attractions, Cafes Coffee Shops and Tearooms, Pubs and Bars, Shops



Breathtaking ruined castle on the Cornish Coast - mythical home of King Arthur

Tintagel, PL34, Cornwall, England

 Highly Recommended by Tigh na Creag!

31. Lanhydrock

Historic Buildings and Monuments, Parks Gardens and Woodlands, Visitor Centres and Museums, Childrens Attractions, Indoor and Outdoor Play Areas, Cafes Coffee Shops and Tearooms, Restaurants



Magnificent late Victorian country house with extensive servants' quarters, gardens and wooded estate

Bodmin, PL30 5AD, Cornwall, England

 Highly Recommended by Tigh na Creag!

32. Fistral Beach

Beaches, Sailing and Watersports



World Famous surfing Beach in Newquay, Cornwall

Newquay, Cornwall, Cornwall, England

 Highly Recommended by Tigh na Creag!

33. Newquay Zoo

Zoos Farms and Wildlife Parks



One of the nations's best zoos, home of many of the world's endangered species.

Newquay, TR7 2LZ, Cornwall, England

 Highly Recommended by Tigh na Creag!

34. Babbacombe Model Village

Childrens Attractions



Thousands of miniature buildings, people and vehicles capture the essence of England's past, present and future

Babbacombe, TQ1 3LA, Devon, England

 Highly Recommended by Tigh na Creag!

35. Lost Gardens of Heligan

Parks Gardens and Woodlands



One of the most popular botanical gardens in the UK

St Austell, PL26 6EN, Cornwall, England

"A great day out for everyone. Highly recommended by us as a family. Plenty of space for kids to run around. Beautiful gardens and walks."

Highly Recommended by Tigh na Creag!

36. Blackpool Sands Beach Devon

Beaches, Childrens Attractions, Cafes Coffee Shops and Tearooms, Shops, Sailing and Watersports



Award-winning family beach with turquoise blue sea giving it an almost Mediterranean feel.

Dartmouth, TQ6 0RG, Devon, England

Highly Recommended by Tigh na Creag!

37. Slapton Sands and Torcross

Beaches, Childrens Attractions, Sailing and Watersports



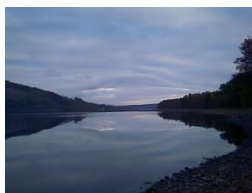
Fantastic pebble beach in Devon

Slapton, TQ6, Devon, England

Highly Recommended by Tigh na Creag!

38. Loch Venachar

Lochs Lakes and Waterfalls



Loch Venachar, The Trossachs

Callander, FK8 3EN, Stirlingshire, Scotland

"There is a great walk down the southside of the Loch leading past the sailing club and if you branch right you can reach the Byre Inn."

By Tigh na Creag

39. Raasay House in the Western Isles*Cafes Coffee Shops and Tearooms, Cycling and Mountain Bikes, Sailing and Watersports, Walking and Climbing*

We offer outdoor skills and programmes for all levels on the Isle of Raasay in the Western Isles of Scotland.

Isle of Raasay, IV40 8PB, Western Isles, Scotland

40. Aros Centre*Cinemas, Live Music and Comedy, Theatres, Shops, Walking and Climbing*

A Cinema, Theatre, Café, Gift Shop and Visitors Exhibition

Portree, IV51 9EU, Western Isles, Scotland

41. Skye guiding Richard McGuire*Walking and Climbing*

Mountain Hiking Courses and Private Guiding in the Cuillin of Skye

Portree, IV51 9JA, The Highlands, Scotland

42. Wullies Tours & Taxi Hire*Taxi Services, Guided Tours and Day Trips*

Offering a unique experience of the Scottish Highlands, Wullie can take groups of up to 7 in his fully disabled-friendly new tourer. Tours or Taxis.

Broadford, IV49 9AB, The Highlands, Scotland

43. Castle Keep*Visitor Centres and Museums, Shops*

Hand crafted swords in the shadow of the Cuillin mountains

Strathaird, IV49 9AX, The Highlands, Scotland

44. Duncan House Fine Celtic Jewellery*Art Gallery, Shops*

Garth Duncan started making jewellery in 1972. His work includes Ancient Celtic knotwork and Pictish style and contemporary jewellery

Strathaird Steading Strathaird, IV49 9AX, The Highlands, Scotland

45. Talisker Distillery on the Isle of Skye*Distilleries Breweries Vineyards, Visitor Centres and Museums*

The only distillery on the Isle of Skye, set on the shores of Loch Harport with dramatic views of the Cuillins. This single malt is so easy to enjoy, and like Skye itself, so hard to leave

Isle of Skye, IV47 8RR, The Highlands, Scotland

46. Skye Serpentarium Reptile World*Visitor Centres and Museums, Shops*

Reptile exhibition, breeding centre, refuge and shop.

Broadford, IV49 9AQ, The Highlands, Scotland

47. Dun Ringill*Historic Buildings and Monuments*

An Iron Age broch (Dun) perched on the Skye coastline

Elgol, IV49, The Highlands, Scotland

48. Cuillin View Gallery & Coffee Shop*Art Gallery, Visitor Centres and Museums, Cafes Coffee Shops and Tearooms*

Great views guaranteed at the Cuillin View Gallery & Coffee Shop in beautiful Elgol on the mystical Isle of Skye.

Elgol, IV49 9BJ, Western Isles, Scotland

**More Information**

For more information, you can find us under ref.nr. 82932 on LovetoEscape.com

LovetoEscape.com/holiday-cottages/82932/tigh-na-creag.htm