

Egloskerry Old Station



Contact Details:

Daytime Phone: 01 566 785 196

The Old Station
Egloskerry
Launceston
Cornwall
PL15 8ST
England

£ 35.00 - £ 55.00 pppn



The Old Station is set in 3 acres of beautiful countryside and is perfect for peace and quiet after a busy day out. You can sit out on the platform having afternoon tea or take a stroll around the grounds. We are offering peace and quiet in comfort.

Facilities:

- **Catering:**
Afternoon Tea, Breakfast, Special Diets Catered For, Vegetarians Catered For
- **Communications:**
Broadband Internet, Mobile Network Coverage, Wifi
- **Entertainment:**
Book Library, DVD Player, TV, Video/DVD Library
- **Indoor Facilities:**
Guest Lounge
- **Outside Area:**
Enclosed Garden, Outside Seating, Patio \ Outside Dining Area, Private Garden, Private Parking
- **Room Features:**
Hair-dryer, Iron/Ironing Board, Satellite TV/ Freeview, Tea And Coffee Making Facilities, TV in bedroom, Video / DVD
- **Standard:**
Luxury
- **Suitable For:**
Families, Romantic getaways, Short Breaks

Room Details:

Sleeps: 4

1 En-Suite Double Room

1 En-Suite Twin Room

2 Bathrooms

About Launceston and Cornwall

The Old Station is in the small pretty village of Egloskerry about 4 miles from Launceston. We have many original features of the Station which was opened in 1892 plus a PMV on its on stretch of track. Walk along the track bed which is a garden now.

Nearest Train Station: Exeter

Nearest Motorway: A30

Nearest Airport: Newquay or Exeter

Recommended Attractions


1. Tintagel and Tintagel Castle

Beaches, Historic Buildings and Monuments, Lochs Lakes and Waterfalls, Parks Gardens and Woodlands, Visitor Centres and Museums, Childrens Attractions, Cafes Coffee Shops and Tearooms, Pubs and Bars, Shops



Breathtaking ruined castle on the Cornish Coast - mythical home of King Arthur

Tintagel, PL34, Cornwall, England

 Highly Recommended by Egloskerry Old Station!


2. Lanhydrock

Historic Buildings and Monuments, Parks Gardens and Woodlands, Visitor Centres and Museums, Childrens Attractions, Indoor and Outdoor Play Areas, Cafes Coffee Shops and Tearooms, Restaurants



Magnificent late Victorian country house with extensive servants' quarters, gardens and wooded estate

Bodmin, PL30 5AD, Cornwall, England

 Highly Recommended by Egloskerry Old Station!

3. Lost Gardens of Heligan

Parks Gardens and Woodlands



One of the most popular botanical gardens in the UK

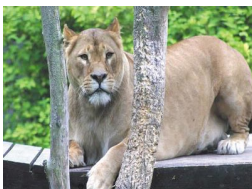
St Austell, PL26 6EN, Cornwall, England

"A great day out for everyone. Highly recommended by us as a family. Plenty of space for kids to run around. Beautiful gardens and walks."

 Highly Recommended by Egloskerry Old Station!

4. Newquay Zoo

Zoos Farms and Wildlife Parks



One of the nations's best zoos, home of many of the world's endangered species.

Newquay, TR7 2LZ, Cornwall, England

 Highly Recommended by Egloskerry Old Station!

5. Fistral Beach

Beaches, Sailing and Watersports



World Famous surfing Beach in Newquay, Cornwall

Newquay, Cornwall, Cornwall, England

👍 Highly Recommended by Egloskerry Old Station!

6. Bodmin Moor

Walking and Climbing



A rugged and beautiful granite moorland in northeastern Cornwall

Bodmin, PL15 7xx, Cornwall, England

7. Camel Trail in Cornwall

Parks Gardens and Woodlands, Walking and Climbing



17 mile long trail reaching from St Breward to Padstow

Bodmin , PL30 4NZ, Cornwall, England

8. The Amazing Cornish Maize Maze

Indoor and Outdoor Play Areas



Situated on a working farm with a range of activities

Saltash, PL12 6RZ, Cornwall, England

9. The Eden Project in Cornwall

Lochs Lakes and Waterfalls, Parks Gardens and Woodlands, Tours and Trips, Visitor Centres and Museums, Childrens Attractions, Zoos Farms and Wildlife Parks, Cafes Coffee Shops and Tearooms



World Famous visitor attraction in Cornwall - the living theatre of plants and people. Located near St Austell in Cornwall

St Austell, PL24 2SG, Cornwall, England

10. Mount Edgumbe House and Country Park

Historic Buildings and Monuments, Parks Gardens and Woodlands



Red Stone Tudor Mansion

Cremyll, PL10 1HZ , Cornwall, England

11. Charlestown Shipwreck & Heritage Centre

Visitor Centres and Museums



Varying exhibitions displaying artifacts from shipwrecks, local village life and the clay industry

St Austell, PL25 3NJ, Cornwall, England

12. Plume of Feathers Restaurant

Restaurants



Fine destination pub/restuarant

Mitchell, TR8 5AX, Cornwall, England

13. National Maritime Museum Cornwall

Visitor Centres and Museums



Housed in an award winning building on the Falmouth harbour-side, the National Maritime Museum Cornwall transports you into the world of small boats and Cornish maritime history

Falmouth, TR11 3QY, Cornwall, England

14. Rosewarne Manor Restaurant

Bistros and Brasseries, Restaurants



A la Carte Menu Restaurant

Hayle, TR27 5JQ, Cornwall, England

15. The Flambards Experience

Theme Parks



Thrill rides, the Flambards Victorian Village and Britain in the Blitz indoor tourist attraction.

Helston, TR13 0QA, Cornwall, England

16. Godolphin Arms

Restaurants



Range of classic dishes, using only local and fresh produce, with great views of St Michael's Mount

Marazion, TR17 0EN, Cornwall, England

17. St. Michael's Mount

Beaches, Historic Buildings and Monuments, Parks Gardens and Woodlands, Cafes Coffee Shops and Tearooms



Medieval Castle and Church

Marazion, TR17 0EF, Cornwall, England

18. Lands End Visitor Centre in Cornwall

Visitor Centres and Museums, Childrens Attractions, Walking and Climbing



Explore the cliff top trails, natural splendour and visit the five fantastic value family attractions. Entrance to Land's End is free, you only pay to park your car.

Sennen, TR19 7AA, Cornwall, England

Phone: 0871 720 0044



More Information

For more information, you can find us under ref.nr. 45136 on LovetoEscape.com

LovetoEscape.com/guest-houses-bnbs/45136/egloskerry-old-station.htm