

Hotel Saint Paul Rive Gauche Paris France



Contact Details:

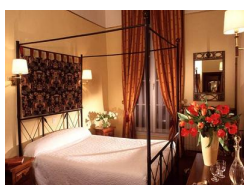
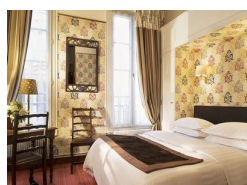
PARIS

Paris

75006

France

€ 178.00 - € 338.00 per night



A residence dating from the end of the XVIIth century, ideally situated in the 6th district of Paris in the rue Monsieur le Prince near numerous monuments and museums. Luxury hotel steeped in tradition.

Facilities:

- **Catering:**
Breakfast
- **Communications:**
Broadband Internet, Phone, Wifi
- **Entertainment:**
Mini-bar, Satellite, TV
- **Indoor Facilities:**
Laundry Facilities
- **Room Features:**
Air-Conditioning, Hair-dryer, Iron/Ironing Board, Satellite TV/
Freeview, TV in bedroom
- **Special:**
Cots Available, Extra Beds Available
- **Standard:**
Luxury
- **Suitable For:**
Elderly, Families, Romantic getaways, Short Breaks, Special
Occasions

Room Details:

Sleeps: 64

- 15 En-Suite Double Rooms
- 2 En-Suite Family Rooms
- 5 En-Suite Single Rooms
- 2 En-Suite Triple Rooms
- 7 En-Suite Twin Rooms
- 31 Bathrooms

About PARIS and Paris

situated in the 6th district of Paris in the rue Monsieur le Prince, next to the Luxembourg Gardens, St Germain des Prés, Latin Quarter.

Nearest Bus Stop: 21, 27, 38, 58, 63, 70, 82,84, 85, 86, 87, 89, 96

Nearest Train Station: Gare Montparnasse, Gare de Lyon

Nearest Motorway: A13, A4

Nearest Airport: ORLYand CDG

Recommended Attractions

1. Goodwood

Art Gallery, Historic Buildings and Monuments, Nature Reserve, Parks Gardens and Woodlands, Tours and Trips, Visitor Centres and Museums, Childrens Attractions, Zoos Farms and Wildlife Parks, Bistros and Brasseries, Cafes Coffee Shops and Tearooms, Horse Riding and Pony Trekking, Shooting and Fishing, Walking and Climbing



Motor circuit, Stately Home, Racecourse, Aerodrome, Forestry, Organic Farm Shop, Festival of Speed, Goodwood Revival

Chichester, PO18 0PX, West Sussex, England

2. Goodwood Races

Festivals and Events, Horse Racing



Under the family of the Duke of Richmond, Goodwood Races sits only five miles north of the town of Chichester.

Chichester, PO18 0PS, West Sussex, England

3. Arundel Castle and Gardens

Historic Buildings and Monuments, Parks Gardens and Woodlands



This converted Castle and Stately Home is over 1000 years old, and sits on the bank of the River Arun in West Sussex

Arundel, BN18 9AB, West Sussex, England

4. Chichester Cathedral

Historic Buildings and Monuments, Tours and Trips



This 900 Year Old Cathedral has been visited millions of times by people of all faiths and denominations.

Chichester, PO19 1PX, West Sussex, England

5. Petworth House

Historic Buildings and Monuments, Parks Gardens and Woodlands

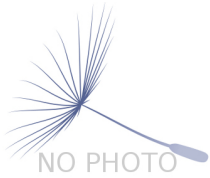


Petworth House is a grade 1 listed building from the 17th Century. Set in an idyllic 700-acre Deer Park, it makes a great day out for viewing the historic building and walking in the verdant park surrounding it.

Petworth, GU28 0AE, West Sussex, England

6. Bucklers Hard

Visitor Centres and Museums, Childrens Attractions

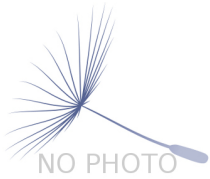


Bucklers Hard is a 18th century maritime village which is situated on the Beaulieu River, it has a stunning Marina and plenty to see in the village.

Brockenhurst, SO42 7XB, Hampshire, England

7. Beaulieu Estate

Historic Buildings and Monuments, Visitor Centres and Museums, Childrens Attractions



Beaulieu is situated in the New Forest National Park, it is the perfect place for a fun day including museums, the historic abbey and the list goes on

Brockenhurst, SO42 7ZN, Hampshire, England

8. Paultons Park

Theme Parks



Paultons Family Theme Park is a great day out, there are a wide selection of rides allowing you to have the most fun and exciting day out.

The New Forest, SO51 6AL, Hampshire, England

9. Chateau de Hautefort

Historic Buildings and Monuments, Parks Gardens and Woodlands



Magnificent 17c Castle perched on a hill in a beautiful area of France.

Hautefort, 24390, Dordogne, France

"This chateau is off the hook."

👍 Highly Recommended by Hotel Saint Paul Rive Gauche Paris France!

10. Blackpool Sands Beach Devon

Beaches, Childrens Attractions, Cafes Coffee Shops and Tearooms, Shops, Sailing and Watersports



Award-winning family beach with turquoise blue sea giving it an almost Mediterranean feel.

Dartmouth, TQ6 0RG, Devon, England

👍 Highly Recommended by Hotel Saint Paul Rive Gauche Paris France!

11. Babbacombe Model Village

Childrens Attractions



Thousands of miniature buildings, people and vehicles capture the essence of England's past, present and future

Babbacombe, TQ1 3LA, Devon, England

 Highly Recommended by Hotel Saint Paul Rive Gauche Paris France!

12. Slapton Sands and Torcross

Beaches, Childrens Attractions, Sailing and Watersports



Fantastic pebble beach in Devon

Slapton, TQ6, Devon, England

 Highly Recommended by Hotel Saint Paul Rive Gauche Paris France!

13. Exmoor National Park

Parks Gardens and Woodlands, Horse Riding and Pony Trekking, Shooting and Fishing, Walking and Climbing



Beautiful national park spanning Somerset and Devon

Dulverton, TA22 9HL, Somerset, England

 Highly Recommended by Hotel Saint Paul Rive Gauche Paris France!

14. Dunster Castle

Historic Buildings and Monuments, Parks Gardens and Woodlands



National Trust Property with subtropical terraced garden

Dunster, TA24 6SL, Somerset, England

 Highly Recommended by Hotel Saint Paul Rive Gauche Paris France!

15. Quince Honey Farm

Visitor Centres and Museums, Childrens Attractions, Zoos Farms and Wildlife Parks, Shops



World famous honey farm - the largest in the country

South Molton, EX36 3AZ, Devon, England

 **Highly Recommended by Hotel Saint Paul Rive Gauche Paris France!**

16. Lynton and Barnstaple Railway

Tours and Trips, Cafes Coffee Shops and Tearooms, Railways



A restored narrow gauge steam railway in the Exmoor National Park area of North Devon. One mile of the original 19 miles has so far been re-opened.

Martinhoe Cross, Parracombe, EX31 4RA, Devon, England

Phone: 01598 763487

 **Highly Recommended by Hotel Saint Paul Rive Gauche Paris France!**

17. Westward Ho! Beach

Beaches, Childrens Attractions



Over 2 miles of sandy beach in North Devon

Westward Ho, TQ1 , Devon, England

 **Highly Recommended by Hotel Saint Paul Rive Gauche Paris France!**

18. Saunton Sands Beach

Beaches, Childrens Attractions, Sailing and Watersports



3 miles long sandy beach, ideal for families and popular with surfers

Saunton, EX33, Devon, England

 **Highly Recommended by Hotel Saint Paul Rive Gauche Paris France!**

19. Horse riding holidays in North Devon Croyde

Childrens Attractions, Horse Riding and Pony Trekking



Roylands riding stables cater for all abilities and offer horse riding holidays.

Croyde, EX33, Devon, England

 **Highly Recommended by Hotel Saint Paul Rive Gauche Paris France!**

20. h2outdoor Adventure Activities North Devon

Tours and Trips, Cycling and Mountain Bikes, Horse Riding and Pony Trekking, Sailing and Watersports, Walking and Climbing, Guided Walks, Guided Tours and Day Trips



A fantastic selection of adventure activities in North Devon. Sea kayaking, canoeing, surfing, coasteering, mountain biking, pony trekking & high ropes are just some of the activities we offer. Suitable for children, groups, stag/hen & corporate

Woolacombe, EX34 7BZ, Devon, England

Highly Recommended by Hotel Saint Paul Rive Gauche Paris France!

21. The Milky Way Adventure Park

Visitor Centres and Museums, Childrens Attractions, Indoor and Outdoor Play Areas



North Devon's largest undercover family attraction.

Bideford, EX39 5RY, Devon, England

Highly Recommended by Hotel Saint Paul Rive Gauche Paris France!

22. Lanhydrock

Historic Buildings and Monuments, Parks Gardens and Woodlands, Visitor Centres and Museums, Childrens Attractions, Indoor and Outdoor Play Areas, Cafes Coffee Shops and Tearooms, Restaurants



Magnificent late Victorian country house with extensive servants' quarters, gardens and wooded estate

Bodmin, PL30 5AD, Cornwall, England

Highly Recommended by Hotel Saint Paul Rive Gauche Paris France!

23. Lost Gardens of Heligan

Parks Gardens and Woodlands



One of the most popular botanical gardens in the UK

St Austell, PL26 6EN, Cornwall, England

"A great day out for everyone. Highly recommended by us as a family. Plenty of space for kids to run around. Beautiful gardens and walks."

Highly Recommended by Hotel Saint Paul Rive Gauche Paris France!

24. Tintagel and Tintagel Castle

Beaches, Historic Buildings and Monuments, Lochs Lakes and Waterfalls, Parks Gardens and Woodlands, Visitor Centres and Museums, Childrens Attractions, Cafes Coffee Shops and Tearooms, Pubs and Bars, Shops



Breathtaking ruined castle on the Cornish Coast - mythical home of King Arthur

Tintagel, PL34, Cornwall, England

 **Highly Recommended by Hotel Saint Paul Rive Gauche Paris France!**

25. Newquay Zoo

Zoos Farms and Wildlife Parks



One of the nations's best zoos, home of many of the world's endangered species.

Newquay, TR7 2LZ, Cornwall, England

 **Highly Recommended by Hotel Saint Paul Rive Gauche Paris France!**

26. Fistral Beach

Beaches, Sailing and Watersports



World Famous surfing Beach in Newquay, Cornwall

Newquay, Cornwall, Cornwall, England

 **Highly Recommended by Hotel Saint Paul Rive Gauche Paris France!**

27. Lundy Island

Beaches, Tours and Trips, Childrens Attractions, Pubs and Bars, Walking and Climbing



Lundy Island and Nature Reserve

Bideford, EX39 2LY, Devon, England

 **Highly Recommended by Hotel Saint Paul Rive Gauche Paris France!**

28. Nick Vowles - Accommodation

Individual

Paris, 75 019, Paris, France



29. Monet's gardens in Giverny

Historic Buildings and Monuments, Parks Gardens and Woodlands



The house and gardens of painter Claude Monet

Giverny, 27620, Eure, France

30. Museum of impressionisms

Art Gallery, Visitor Centres and Museums

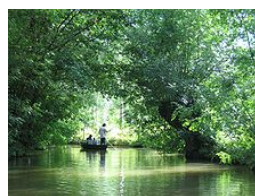


exhibitions of painters from impressionism and its continuations.

Giverny, 27620, Eure, France

31. Parc interrgrional du Marais poitevin

Lochs Lakes and Waterfalls, Nature Reserve, Parks Gardens and Woodlands



The Marais Poitevin is a large area of marshland in Western France, a remnant of the former Gulf of Poitou (the name meaning 'Poitou's Marsh', 'Marsh of Poitou region').

Coulon, 79510, Vendee, France

32. Vallee des Singes Monkey Valley

Parks Gardens and Woodlands, Childrens Attractions, Zoos Farms and Wildlife Parks



Wildlife park where monkeys, apes and primates roam freely in a beautiful setting.

Le Gureau, 86700, Vienne, France

33. Aquarium du Périgord Noir

Nature Reserve, Aquariums, Childrens Attractions



The Périgord Noir Aquarium invites you to discover a fascinating world of 3 million litres of water, where you can watch in natural light, more than 6000 fishes in their natural surroundings.

LE BUGUE, 24 260, Dordogne, France

34. Canoe Vacances

Historic Buildings and Monuments, Lochs Lakes and Waterfalls, Parks Gardens and Woodlands, Tours and Trips, Sailing and Watersports, Boat Trips, Guided Tours and Day Trips



Canoe and Kayaks for 2, 3 and 4 people. Courses for 9km, 16km and 25km. Snack bar and car park

LA ROQUE GAGEAC, 24 250, Dordogne, France

35. Le Château des Milandes

Historic Buildings and Monuments, Parks Gardens and Woodlands, Tours and Trips, Visitor Centres and Museums



Discover a historical heritage – Built in 1489, the castle is remarkable for the richness of its outdoor sculptures. The newly renovated gardens will welcome you for an extraordinary visit and discovery of over 10 rooms in this Renaissance residence

CASTELNAUD LA CHAPELLE, 24 250, Dordogne, France

36. Oradour Sur Glane

Historic Buildings and Monuments, Visitor Centres and Museums



The famous ‘martyr Village’; subject to a terrible Nazi massacre in World War Two

Oradour-sur-Glane, 87520, Haute-Vienne, France

37. Parc Animalier de la Colline Enchantée

Parks Gardens and Woodlands, Childrens Attractions, Zoos Farms and Wildlife Parks



Animal Park and Farm

Hiesse, 16490, Haute-Vienne, France

38. Chateau de Amboise

Historic Buildings and Monuments



The royal Château at Amboise is a château located in Amboise, in the Indre-et-Loire département of the Loire Valley in France.

Amboise, 37403, Indre-et-Loire, France

39. Parc Leonardo Da Vinci

Art Gallery, Historic Buildings and Monuments, Visitor Centres and Museums



Château du Clos Lucé - Parc Leonardo da Vinci; Leonardo da Vinci's residence

Amboise - Val de Loire France, 37400, Indre-et-Loire, France

40. Chateau de Valençay

Historic Buildings and Monuments



Château de Valençay is a residence of the d'Estampes and Talleyrand-Périgord families in the commune of Valençay, the Indre département of France. The castle and park offer an attraction suitable for individuals, families, groups and schools.

Valençay, 36600, Indre, France

41. La Source

Shops



French Boutique in the spa town of bagnoles de lorne

bagnoles de lorne, 61140, Orne, France

42. Chateaux Lassay les Chateaux

Historic Buildings and Monuments, Childrens Attractions



The Châteaux, one of the best preserved medieval Châteaux in France, with its working drawbridge and barbican being just one of its remarkable features

Lassay Les Chateaux, 53110, Mayenne, France

43. Villandry

Historic Buildings and Monuments, Tours and Trips, Visitor Centres and Museums



<http://www.chateauvillandry.fr/en/>

Villandry, 37510, Indre-et-Loire, France

44. Nausicaa

Visitor Centres and Museums, Aquariums



Sea life Center

Boulogne-sur-Mer, 62203,
Pas-de-Calais, France

45. Jublains Museum & Archaeological Site

Historic Buildings and Monuments, Visitor Centres and Museums



The museum, presents the Gallic era and the Antiquity of the whole department of la Mayenne, with Fort, theatre, temple, public baths under the church.

Jublains, 53160, Mayenne, France

46. Action Watersports in Kent

Lochs Lakes and Waterfalls, Childrens Attractions, Sailing and Watersports



Water-ski, Wakeboarding, Barefoot or Jet Ski at the South East's Premier Watersports Centre. Everyone welcome from 1st timers to experts. All equipment supplied. Situated at a freshwater lake in Lydd, Kent.

Lake 1, Dengemarsh Road, Lydd, TN29 9JH, Kent, England

Phone: 01797 321885

47. Romney Hythe and Dymchurch Railway

Childrens Attractions, Railways



Fantastic miniature railway cover 13.5 miles of beautiful Kent coastline

New Romney, TN28 8PL, Kent, England

48. Alpaca Trekking in Kent

Childrens Attractions, Zoos Farms and Wildlife Parks, Guided Tours and Day Trips



Trekking with us is a wonderful way to get the feel of Romney Marsh, the dykes, the farmland, crops and it is a unique time with our alpacas to learn more about them.

Burmarsh, Tn29 0JR, Kent, England

Phone: 01303 870527



More Information

For more information, you can find us under ref.nr. 46760 on LovetoEscape.com

LovetoEscape.com/hotels/46760/hotel-saint-paul-rive-gauche-paris-france.htm