

## Shamrock Lodge Country House Hotel Westmeath



### Contact Details:

Clonown Road  
0  
Athlone  
County Westmeath  
Ireland  
Ireland

€ 49.50 - € 300.00 per night

**Shamrock Lodge Country House Hotel Westmeath. Hotel Accommodation in Athlone, County Westmeath. 3 star Hotel Accommodation in Westmeath, Ireland.**

### Facilities:

- **Suitable For:**  
Romantic getaways, Short Breaks

### Room Details:

**70 Bedrooms**

### About Athlone and County Westmeath

The Shamrock Lodge Country House Hotel is in Athlone Westmeath, Ireland. The address is Clonown Road, Athlone County Westmeath.

## Recommended Attractions

### 1. Goodwood

*Art Gallery, Historic Buildings and Monuments, Nature Reserve, Parks Gardens and Woodlands, Tours and Trips, Visitor Centres and Museums, Childrens Attractions, Zoos Farms and Wildlife Parks, Bistros and Brasseries, Cafes Coffee Shops and Tearooms, Horse Riding and Pony Trekking, Shooting and Fishing, Walking and Climbing*



Motor circuit, Stately Home, Racecourse, Aerodrome, Forestry, Organic Farm Shop, Festival of Speed, Goodwood Revival

Chichester, PO18 0PX, West Sussex, England

### 2. Goodwood Races

*Festivals and Events, Horse Racing*



Under the family of the Duke of Richmond, Goodwood Races sits only five miles north of the town of Chichester.

Chichester, PO18 0PS, West Sussex, England

### 3. Arundel Castle and Gardens

*Historic Buildings and Monuments, Parks Gardens and Woodlands*



This converted Castle and Stately Home is over 1000 years old, and sits on the bank of the River Arun in West Sussex

Arundel, BN18 9AB, West Sussex, England

### 4. Chichester Cathedral

*Historic Buildings and Monuments, Tours and Trips*



This 900 Year Old Cathedral has been visited millions of times by people of all faiths and denominations.

Chichester, PO19 1PX, West Sussex, England

### 5. Petworth House

*Historic Buildings and Monuments, Parks Gardens and Woodlands*



Petworth House is a grade 1 listed building from the 17th Century. Set in an idyllic 700-acre Deer Park, it makes a great day out for viewing the historic building and walking in the verdant park surrounding it.

Petworth, GU28 0AE, West Sussex, England

**6. Bucklers Hard**

Visitor Centres and Museums, Childrens Attractions



Bucklers Hard is a 18th century maritime village which is situated on the Beaulieu River, it has a stunning Marina and plenty to see in the village.

Brockenhurst, SO42 7XB, Hampshire, England

**7. Beaulieu Estate**

Historic Buildings and Monuments, Visitor Centres and Museums, Childrens Attractions



Beaulieu is situated in the New Forest National Park, it is the perfect place for a fun day including museums, the historic abbey and the list goes on

Brockenhurst, SO42 7ZN, Hampshire, England

**8. Paultons Park**

Theme Parks



Paultons Family Theme Park is a great day out, there are a wide selection of rides allowing you to have the most fun and exciting day out.

The New Forest, SO51 6AL, Hampshire, England

**9. Lundy Island**

Beaches, Tours and Trips, Childrens Attractions, Pubs and Bars, Walking and Climbing



Lundy Island and Nature Reserve

Bideford, EX39 2LY, Devon, England

**Highly Recommended by Shamrock Lodge Country House Hotel Westmeath!**

**10. h2outdoor Adventure Activities North Devon**

Tours and Trips, Cycling and Mountain Bikes, Horse Riding and Pony Trekking, Sailing and Watersports, Walking and Climbing, Guided Walks, Guided Tours and Day Trips



A fantastic selection of adventure activities in North Devon. Sea kayaking, canoeing, surfing, coasteering, mountain biking, pony trekking & high ropes are just some of the activities we offer. Suitable for children, groups, stag/hen & corporate

Woolacombe, EX34 7BZ, Devon, England

**Highly Recommended by Shamrock Lodge Country House Hotel Westmeath!**

**11. Horse riding holidays in North Devon Croyde**

Childrens Attractions, Horse Riding and Pony Trekking



Roylands riding stables cater for all abilities and offer horse riding holidays.

Croyde, EX33, Devon, England

**Highly Recommended by Shamrock Lodge Country House Hotel Westmeath!**

### 12. Saunton Sands Beach

*Beaches, Childrens Attractions, Sailing and Watersports*



3 miles long sandy beach, ideal for families and popular with surfers

Saunton, EX33, Devon, England

**Highly Recommended by Shamrock Lodge Country House Hotel Westmeath!**

### 13. The Milky Way Adventure Park

*Visitor Centres and Museums, Childrens Attractions, Indoor and Outdoor Play Areas*



North Devon's largest undercover family attraction.

Bideford, EX39 5RY, Devon, England

**Highly Recommended by Shamrock Lodge Country House Hotel Westmeath!**

### 14. Westward Ho! Beach

*Beaches, Childrens Attractions*



Over 2 miles of sandy beach in North Devon

Westward Ho, TQ1 , Devon, England

**Highly Recommended by Shamrock Lodge Country House Hotel Westmeath!**

### 15. Lynton and Barnstaple Railway

*Tours and Trips, Cafes Coffee Shops and Tearooms, Railways*



A restored narrow gauge steam railway in the Exmoor National Park area of North Devon. One mile of the original 19 miles has so far been re-opened.

Martinhoe Cross, Parracombe, EX31 4RA, Devon, England

**Phone:** 01598 763487

**Highly Recommended by Shamrock Lodge Country House Hotel Westmeath!**

**16. Tintagel and Tintagel Castle**

*Beaches, Historic Buildings and Monuments, Lochs Lakes and Waterfalls, Parks Gardens and Woodlands, Visitor Centres and Museums, Childrens Attractions, Cafes Coffee Shops and Tearooms, Pubs and Bars, Shops*



Breathtaking ruined castle on the Cornish Coast - mythical home of King Arthur  
 Tintagel, PL34, Cornwall, England

**Highly Recommended by Shamrock Lodge Country House Hotel Westmeath!**

**17. The Cross Keys Restaurant in Kippen**

*Pubs and Bars, Restaurants*



Traditional and comfortable inn situated in the village of Kippen, Stirlingshire. We serve food all day from soups to sirloins, with home made pies and puddings to finish. Every Sunday is roast day featuring two types of roast.Children Welcome.  
 Kippen, FK8 3DN, Stirlingshire, Scotland  
**Phone: 01786 870293**

**Highly Recommended by Shamrock Lodge Country House Hotel Westmeath!**

**18. Quince Honey Farm**

*Visitor Centres and Museums, Childrens Attractions, Zoos Farms and Wildlife Parks, Shops*



World famous honey farm - the largest in the country  
 South Molton, EX36 3AZ, Devon, England

**Highly Recommended by Shamrock Lodge Country House Hotel Westmeath!**

**19. Fistral Beach**

*Beaches, Sailing and Watersports*

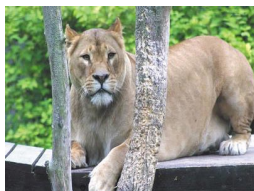


World Famous surfing Beach in Newquay, Cornwall  
 Newquay, Cornwall, Cornwall, England

**Highly Recommended by Shamrock Lodge Country House Hotel Westmeath!**

**20. Newquay Zoo**

*Zoos Farms and Wildlife Parks*



One of the nations's best zoos, home of many of the world's endangered species.  
 Newquay, TR7 2LZ, Cornwall, England

 **Highly Recommended by Shamrock Lodge Country House Hotel Westmeath!**

---

### 21. Dunster Castle

*Historic Buildings and Monuments, Parks Gardens and Woodlands*



National Trust Property with subtropical terraced garden

Dunster, TA24 6SL, Somerset, England

 **Highly Recommended by Shamrock Lodge Country House Hotel Westmeath!**

---

### 22. Lanhydrock

*Historic Buildings and Monuments, Parks Gardens and Woodlands, Visitor Centres and Museums, Childrens Attractions, Indoor and Outdoor Play Areas, Cafes Coffee Shops and Tearooms, Restaurants*



Magnificent late Victorian country house with extensive servants' quarters, gardens and wooded estate

Bodmin, PL30 5AD, Cornwall, England

 **Highly Recommended by Shamrock Lodge Country House Hotel Westmeath!**

---

### 23. Exmoor National Park

*Parks Gardens and Woodlands, Horse Riding and Pony Trekking, Shooting and Fishing, Walking and Climbing*



Beautiful national park spanning Somerset and Devon

Dulverton, TA22 9HL, Somerset, England

 **Highly Recommended by Shamrock Lodge Country House Hotel Westmeath!**

---

### 24. Lost Gardens of Heligan

*Parks Gardens and Woodlands*



One of the most popular botanical gardens in the UK

St Austell, PL26 6EN, Cornwall, England

*"A great day out for everyone. Highly recommended by us as a family. Plenty of space for kids to run around. Beautiful gardens and walks."*

 **Highly Recommended by Shamrock Lodge Country House Hotel Westmeath!**

---

### 25. The Scottish Crannog Centre

*Historic Buildings and Monuments, Visitor Centres and Museums*



Archaeological Open-Air Museum

Kenmore Aberfeldy, PH15 2HY, Perth and Kinross, Scotland

**Highly Recommended by Shamrock Lodge Country House Hotel Westmeath!**

### 26. Gloagburn Farm Shop and Coffee Shop near Perth

*Cafes Coffee Shops and Tearooms, Shops*



The Gloagburn Farm Shop and Café are a local business of high quality offering local produce as well as a café.

Tibbermore, PH1 1QL, Perth and Kinross, Scotland

**Highly Recommended by Shamrock Lodge Country House Hotel Westmeath!**

### 27. The Black Watch Museum

*Visitor Centres and Museums*



Regimental Museum of the Proud and Illustrious Black Watch Regiment in Perth Scotland

Perth, PH1 5HR, Perth and Kinross, Scotland

**Highly Recommended by Shamrock Lodge Country House Hotel Westmeath!**

### 28. Scone Palace

*Historic Buildings and Monuments, Parks Gardens and Woodlands*



Scone Palace occupies a unique position in Scottish History

Perth, PH2 6BD, Perth and Kinross, Scotland

**Highly Recommended by Shamrock Lodge Country House Hotel Westmeath!**

### 29. Scone Palace

*Historic Buildings and Monuments, Parks Gardens and Woodlands*



Former crowning place of the Kings of Scotland, stunning setting in beautiful grounds. A stately home to visit.

Perth, PH2 6BD, Perth and Kinross, Scotland

**Highly Recommended by Shamrock Lodge Country House Hotel Westmeath!**

### 30. Babbacombe Model Village

Childrens Attractions



Thousands of miniature buildings, people and vehicles capture the essence of England's past, present and future

Babbacombe, TQ1 3LA, Devon, England

Highly Recommended by Shamrock Lodge Country House Hotel Westmeath!

### 31. Enchanted Forest in Perthshire

Festivals and Events, Lochs Lakes and Waterfalls, Parks Gardens and Woodlands, Live Music and Comedy



The Enchanted Forest offers visitors a unique opportunity to experience the outdoors, at night and with spectacular imagery. You will experience a lighting show that is out of this world.

Pitlochry, PH16 5LA, Perth and Kinross, Scotland

Highly Recommended by Shamrock Lodge Country House Hotel Westmeath!

### 32. Blair Castle

Historic Buildings and Monuments, Parks Gardens and Woodlands, Cafes Coffee Shops and Tearooms



Historic Castle

Blair Atholl, PH18 5TL, Perth and Kinross, Scotland

Highly Recommended by Shamrock Lodge Country House Hotel Westmeath!

### 33. Blackpool Sands Beach Devon

Beaches, Childrens Attractions, Cafes Coffee Shops and Tearooms, Shops, Sailing and Watersports



Award-winning family beach with turquoise blue sea giving it an almost Mediterranean feel.

Dartmouth, TQ6 0RG, Devon, England

Highly Recommended by Shamrock Lodge Country House Hotel Westmeath!

### 34. Slapton Sands and Torcross

Beaches, Childrens Attractions, Sailing and Watersports

Fantastic pebble beach in Devon

Slapton, TQ6, Devon, England





 Highly Recommended by Shamrock Lodge Country House Hotel Westmeath!

---

### 35. Glamis Castle

*Historic Buildings and Monuments*



Childhood home of Her Majesty Queen Elisabeth The Queen Mother

Glamis, DD8 1RJ, Angus and Dundee, Scotland

 Highly Recommended by Shamrock Lodge Country House Hotel Westmeath!

---

### 36. Balmoral Castle

*Historic Buildings and Monuments, Parks Gardens and Woodlands, Visitor Centres and Museums*



5 Star visitor attraction set amongst the magnificent scenery of Royal Deeside

Balmoral, AB35 5TB, Aberdeenshire, Scotland

 Highly Recommended by Shamrock Lodge Country House Hotel Westmeath!

---

### 37. Dunrobin Castle Golspie Sutherland

*Historic Buildings and Monuments, Visitor Centres and Museums*



Seat of the Duke of Sutherland. Originally built in 1401 and rebuilt in 1835. Castle Tour and Falconry Displays a Must. Open between April and Oct

Golspie, KW10 6RS, The Highlands, Scotland

*"Castle of fairy tales which looks dramatic from the sea. Falconry display and museum worth visiting too."*

 Highly Recommended by Shamrock Lodge Country House Hotel Westmeath!

---

### 38. Brora golf club

*Golf*



Brora Golf Club, a traditional links course, designed by James Braid, where little has changed since he left in 1923.

Brora, KW9 6QS, The Highlands, Scotland

*"Wonderful Braid course in top 100 best courses UK and Ireland."*

 Highly Recommended by Shamrock Lodge Country House Hotel Westmeath!

---

### 39. Loch Venachar

*Lochs Lakes and Waterfalls*



Loch Venachar, The Trossachs

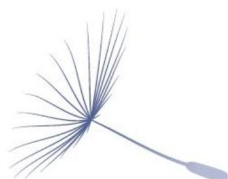
Callander, FK8 3EN, Stirlingshire, Scotland

*"There is a great walk down the southside of the Loch leading past the sailing club and if you branch right you can reach the Byre Inn."*

By Shamrock Lodge Country House Hotel Westmeath

#### 40. Clonmacnoise

*Historic Buildings and Monuments*



An early Christian site founded by Saint Ciaran in the 6th century

Shannonbridge, IRE, County Offaly, Ireland

#### 41. Tudor Farm Kesh Co Fermanagh Northern Ireland

*Lochs Lakes and Waterfalls, Sailing and Watersports, Shooting and Fishing*



Waterfront Home Family Holiday Experience with jetty & slipway available for guest use offering water sports, fishing and tuition

Kesh, BT93 8AQ, County Fermanagh, Ireland

#### 42. Watertop Farm Family activity Centre

*Childrens Attractions, Karting, Indoor and Outdoor Play Areas, Zoos Farms and Wildlife Parks, Horse Riding and Pony Trekking*



Farm with a range of activities for all the family

Ballycastle, BT546RN, County Antrim, Ireland

#### 43. The Waterford Show in City Hall

*Live Entertainment*



An evening of Irish music story, song and dance

Waterford, Ireland, County Waterford, Ireland

#### 44. Suck Valley Way

*Walking and Climbing*



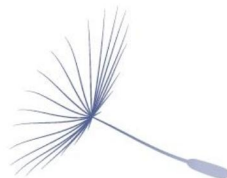
60 mile walk across the county of Galway

Castlerea, Ireland, County Galway, Ireland

---

#### 45. Athenry Castle

*Historic Buildings and Monuments*



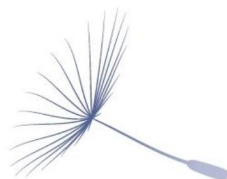
One of the most notable medieval walled towns surviving in Ireland

Athenry, IRE, County Galway, Ireland

---

#### 46. Emo Court

*Historic Buildings and Monuments, Parks Gardens and Woodlands*



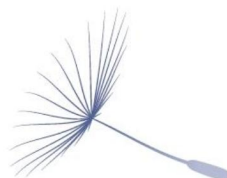
Beautiful 18th century house and gardens

Emo, IRE, County Laois, Ireland

---

#### 47. Boyle Abbey

*Historic Buildings and Monuments*



An impressive and well preserved Cistercian Monastery

Boyle, IRE, County Roscommon, Ireland

---

#### 48. Rinvile Park

*Parks Gardens and Woodlands*



Renville Prk is a quiet and stress free area to take the family for a nice picnic

Galway, Ireland, County Galway, Ireland



#### More Information

For more information, you can find us under ref.nr. 66757 on LovetoEscape.com

[LovetoEscape.com/hotels/66757/shamrock-lodge-country-house-hotel-westmeath.htm](https://LovetoEscape.com/hotels/66757/shamrock-lodge-country-house-hotel-westmeath.htm)