

Hotel Weber



Contact Details:

"22, Boulevard De Nancy "
Strasbourg
Bas-Rhin
67000
France

€ 44.00 - € 48.00 per night

The Hotel Weber is a 1 Star Hotel in Bas-Rhin. Hotel Weber is situated very close to the train station and a 10-minute walk from Strasbourg's historic Petite France district. It offers simple, budget accommodation with flat-screen TVs and Wi-Fi.

Facilities:

- **Price Type:**
Budget
- **Suitable For:**
Romantic getaways, Short Breaks

Room Details:

24 Bedrooms

About Strasbourg and Bas-Rhin

The Hotel Weber, 1 Star Hotel is in Strasbourg, Bas-Rhin, Alsace, France. The address is 22, Boulevard De Nancy, Strasbourg, 67000.

Recommended Attractions

1. Goodwood

Art Gallery, Historic Buildings and Monuments, Nature Reserve, Parks Gardens and Woodlands, Tours and Trips, Visitor Centres and Museums, Childrens Attractions, Zoos Farms and Wildlife Parks, Bistros and Brasseries, Cafes Coffee Shops and Tearooms, Horse Riding and Pony Trekking, Shooting and Fishing, Walking and Climbing



Motor circuit, Stately Home, Racecourse, Aerodrome, Forestry, Organic Farm Shop, Festival of Speed, Goodwood Revival

Chichester, PO18 0PX, West Sussex, England

2. Goodwood Races

Festivals and Events, Horse Racing



Under the family of the Duke of Richmond, Goodwood Races sits only five miles north of the town of Chichester.

Chichester, PO18 0PS, West Sussex, England

3. Arundel Castle and Gardens

Historic Buildings and Monuments, Parks Gardens and Woodlands



This converted Castle and Stately Home is over 1000 years old, and sits on the bank of the River Arun in West Sussex

Arundel, BN18 9AB, West Sussex, England

4. Chichester Cathedral

Historic Buildings and Monuments, Tours and Trips



This 900 Year Old Cathedral has been visited millions of times by people of all faiths and denominations.

Chichester, PO19 1PX, West Sussex, England

5. Petworth House

Historic Buildings and Monuments, Parks Gardens and Woodlands



Petworth House is a grade 1 listed building from the 17th Century. Set in an idyllic 700-acre Deer Park, it makes a great day out for viewing the historic building and walking in the verdant park surrounding it.

Petworth, GU28 0AE, West Sussex, England

6. Bucklers Hard

Visitor Centres and Museums, Childrens Attractions



Bucklers Hard is a 18th century maritime village which is situated on the Beaulieu River, it has a stunning Marina and plenty to see in the village.

Brockenhurst, SO42 7XB, Hampshire, England

7. Beaulieu Estate

Historic Buildings and Monuments, Visitor Centres and Museums, Childrens Attractions



Beaulieu is situated in the New Forest National Park, it is the perfect place for a fun day including museums, the historic abbey and the list goes on

Brockenhurst, SO42 7ZN, Hampshire, England

8. Paultons Park

Theme Parks



Paultons Family Theme Park is a great day out, there are a wide selection of rides allowing you to have the most fun and exciting day out.

The New Forest, SO51 6AL, Hampshire, England

9. Chateau de Hautefort

Historic Buildings and Monuments, Parks Gardens and Woodlands



Magnificent 17c Castle perched on a hill in a beautiful area of France.

Hautefort, 24390, Dordogne, France

"This chateau is off the hook."

 **Highly Recommended by Hotel Weber!**

10. Nick Vowles - Accommodation

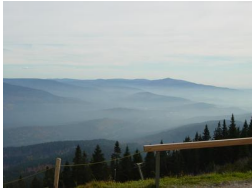
Individual



Paris, 75 019, Paris, France

11. Great Arber mountain

Nature Reserve, Parks Gardens and Woodlands, Walking and Climbing, Winter Sports



The highest mountain in the Bavarian Forest at 1456 metres, great views, major winter sports centre and summer walks.

Bayerisch Eisenstein, 94252, Bavaria, Germany

12. Parc interrégional du Marais poitevin

Lochs Lakes and Waterfalls, Nature Reserve, Parks Gardens and Woodlands



The Marais Poitevin is a large area of marshland in Western France, a remnant of the former Gulf of Poitou (the name meaning 'Poitou's Marsh', 'Marsh of Poitou region').

Coulon, 79510, Vendee, France

13. Vallee des Singes Monkey Valley

Parks Gardens and Woodlands, Childrens Attractions, Zoos Farms and Wildlife Parks



Wildlife park where monkeys, apes and primates roam freely in a beautiful setting.

Le Gureau, 86700, Vienne, France

14. Aquarium du Périgord Noir

Nature Reserve, Aquariums, Childrens Attractions



The Périgord Noir Aquarium invites you to discover a fascinating world of 3 million litres of water, where you can watch in natural light, more than 6000 fishes in their natural surroundings.

LE BUGUE, 24 260, Dordogne, France

15. Canoe Vacances

Historic Buildings and Monuments, Lochs Lakes and Waterfalls, Parks Gardens and Woodlands, Tours and Trips, Sailing and Watersports, Guided Tours and Day Trips, Boat Trips



Canoe and Kayaks for 2, 3 and 4 people. Courses for 9km, 16km and 25km. Snack bar and car park

LA ROQUE GAGEAC, 24 250, Dordogne, France

16. Le Château des Milandes

Historic Buildings and Monuments, Parks Gardens and Woodlands, Tours and Trips, Visitor Centres and Museums



Discover a historical heritage – Built in 1489, the castle is remarkable for the richness of its outdoor sculptures. The newly renovated gardens will welcome you for an extraordinary visit and discovery of over 10 rooms in this Renaissance residence

CASTELNAUD LA CHAPELLE, 24 250,
Dordogne, France

17. Oradour Sur Glane

Historic Buildings and Monuments, Visitor Centres and Museums



The famous ‘martyr Village’; subject to a terrible Nazi massacre in World War Two

Oradour-sur-Glane, 87520,
Haute-Vienne, France

18. Parc Animalier de la Colline Enchantee

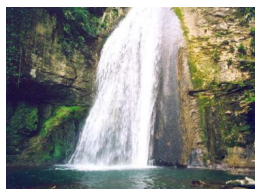
Parks Gardens and Woodlands, Childrens Attractions, Zoos Farms and Wildlife Parks



Animal Park and Farm

Hiesse, 16490, Haute-Vienne, France

19. mario zenari



Molina Waterfalls

negrar, 37024, Veneto, Italy

20. Palio del recioto Valpolicella negrar



At Easter Negrar hosts the Palio del Recioto, a festival with prizes for the best Recioto wine

negrar, 37024, Veneto, Italy

21. Vinitaly



International wine fair

Verona, 37100, Veneto, Italy

22. Monet's gardens in Giverny

Historic Buildings and Monuments, Parks Gardens and Woodlands

The house and gardens of painter Claude Monet

Giverny, 27620, Eure, France



23. Museum of impressionisms

Art Gallery, Visitor Centres and Museums

exhibitions of painters from impressionism and its continuations.

Giverny, 27620, Eure, France



24. Yakarafting

Lochs Lakes and Waterfalls, Nature Reserve, Tours and Trips, Sailing and Watersports, Sports Grounds



Discover one of the most beautiful river of Europe in south of France. Yakarafting is a white water rafting compagny in the valley of Ubaye. You will enjoy this rafting experience, for sure.

Le Lauzet sur Ubaye, 04340, Alpes-de-Haute-Provence, France

25. Torrechiara Castle

Historic Buildings and Monuments, Tours and Trips



A magnificent, fairytale castle, south of Parma. It is one of a series of well preserved castles in this region.

Torrechiara Parma, 43010, Toscana, Italy

26. Czech Tours Explore South Bohemia

Art Gallery, Festivals and Events, Historic Buildings and Monuments, Lochs Lakes and Waterfalls, Nature Reserve, Parks Gardens and Woodlands, Tours and Trips, Distilleries Breweries Vineyards, Visitor Centres and Museums



Cultural, historical and nature tours of South Bohemia, Czech Republic

Cesky Krumlov, 38101, South Bohemian Region, Czech Republic

27. Chateau de Valencay

Historic Buildings and Monuments



Château de Valençay is a residence of the d'Estampes and Talleyrand-Périgord families in the commune of Valençay, the Indre département of France. The castle and park offer an attraction suitable for individuals, families, groups and schools.

Valençay, 36600, Indre, France

28. Creuse Carp

Shooting and Fishing



Carp and coarse fishing on three scenic lakes. Catch carp in excess of 40 lbs

Nouzerines, 23600, Creuse, France

29. Mandilli de Saea Liguria Italy

Cookery Schools, Guided Tours and Day Trips



Hands on cooking classes in Ligurian Riviera, Portofino area. Enjoy real local traditional recipes and a full meal prepared by yourself, either at Anna's private kitchen or in your holiday accommodation .

Cogorno, 16030, Liguria, Italy

30. Nausicaa

Visitor Centres and Museums, Aquariums



Sea life Center

Boulogne-sur-Mer, 62203,
Pas-de-Calais, France

31. Les Loups De Chabrieres

Tours and Trips, Zoos Farms and Wildlife Parks



An unusual wildlife park dedicated to the wolf. It is set in the Chabrieres forest close to Gueret.

Gueret, 23006, Creuse, France

32. Parc Leonardo Da Vinci

Art Gallery, Historic Buildings and Monuments, Visitor Centres and Museums



Château du Clos Lucé - Parc Leonardo da Vinci; Leonardo da Vinci's residence

Amboise - Val de Loire France, 37400, Indre-et-Loire, France

33. Éguzon (or Chambon) lake

Beaches, Lochs Lakes and Waterfalls



The lake lies in the heart of the Creuse valley near Éguzon-Chantôme and covers 312 hectares.

Eguzon, 36070, Indre, France

34. Chateau de Amboise

Historic Buildings and Monuments



The royal Château at Amboise is a château located in Amboise, in the Indre-et-Loire département of the Loire Valley in France.

Amboise, 37403, Indre-et-Loire, France

35. Labyrinthe Geant De Gueret

Visitor Centres and Museums, Childrens Attractions



Activity centre and giant maze

Gueret, 23000, Creuse, France

36. D'Arbre en Arbre - Treetop adventure

Parks Gardens and Woodlands, Childrens Attractions, Indoor and Outdoor Play Areas, Sports Grounds, Walking and Climbing



D'Arbre en Arbre tourist adventure activities acrobatic treetop courses, suspended courses.

FAUX la MONTAGNE, 23340, Creuse, France

37. The White Cliffs of Dover & South Foreland Lighthouse

Beaches, Parks Gardens and Woodlands, Visitor Centres and Museums, Cycling and Mountain Bikes, Horse Riding and Pony Trekking, Sailing and Watersports, Walking and Climbing



The White Cliffs of Dover are the iconic feature of Kent's coastline. Amazing cliff-top walk along to South Foreland Lighthouse for a vintage tea.

Dover, CT16 1HJ, Kent, England

38. Dover Castle and the Secret Wartime tunnels

Historic Buildings and Monuments, Visitor Centres and Museums, Childrens Attractions



If you are looking for a full day for all the family look no further than Dover Castle in Kent. Medieval castle with renovated Keep and wartime tunnels with interactive displays and tours.

Dover, Kent, Kent, England

39. Lac Mondon

Lochs Lakes and Waterfalls, Childrens Attractions, Fitness and Leisure Centres



Lakeside open air pool with waterslide. A beautiful lake for leisure and fishing, with a campsite and bar restaurant on site, and a lovely open air sw

Mailhac sur benaize, 87160, Haute-Vienne, France

40. Sea Searcher boat trips

Tours and Trips, Childrens Attractions, Boat Trips



Boat trips from Ramsgate, sightseeing, seal spotting, wildlife watching, and sea angling.

RAMSGATE, CT11 8LS, Kent, England

41. Lake Vassiviere

Historic Buildings and Monuments, Lochs Lakes and Waterfalls, Parks Gardens and Woodlands, Tours and Trips, Cycling and Mountain Bikes, Fitness and Leisure Centres, Horse Riding and Pony Trekking, Sailing and Watersports, Shooting and Fishing, Sports Grounds, Walking and Climbing, Winter Sports



One of the six largest man made lakes in France with sand beaches, all water sport activities, restaurants, fishing and many more

Peyrat le Chteau, 87470, Haute-Vienne, France

42. The Secret Gardens of Sandwich at The Salvation

Parks Gardens and Woodlands



The Gardens at The Salvation



Recently restored Lutyens & Jekyll designed house and gardens, previously lost to wilderness for over 25 years

Sandwich, CT13 9EW, Kent, England

43. Auberge de la Fontaine*Bistros and Brasseries, Pubs and Bars, Restaurants*

Local Bar and Restaurant

cheissoux, 87460, Haute-Vienne, France

44. Villandry*Historic Buildings and Monuments, Tours and Trips, Visitor Centres and Museums*<http://www.chateauvillandry.fr/en/>

Villandry, 37510, Indre-et-Loire, France

45. Romney Hythe and Dymchurch Railway*Childrens Attractions, Railways*

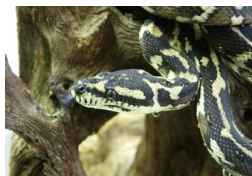
Fantastic miniature railway cover 13.5 miles of beautiful Kent coastline

New Romney, TN28 8PL, Kent, England

46. Alpaca Trekking in Kent*Childrens Attractions, Zoos Farms and Wildlife Parks, Guided Tours and Day Trips*

Trekking with us is a wonderful way to get the feel of Romney Marsh, the dykes, the farmland, crops and it is a unique time with our alpacas to learn more about them.

Burmarsh, Tn29 0JR, Kent, England

Phone: 01303 870527**47. Snake Island***Visitor Centres and Museums, Childrens Attractions, Zoos Farms and Wildlife Parks*

An island with a variety of reptiles and animals.

La Trimouille, 86290, Vienne, France

48. Action Watersports in Kent*Lochs Lakes and Waterfalls, Childrens Attractions, Sailing and Watersports*



Water-ski, Wakeboarding, Barefoot or Jet Ski at the South East's Premier Watersports Centre. Everyone welcome from 1st timers to experts. All equipment supplied. Situated at a freshwater lake in Lydd, Kent.

Lake 1, Dengemarsh Road, Lydd, TN29 9JH, Kent, England

Phone: 01797 321885



More Information

For more information, you can find us under ref.nr. 67049 on LovetoEscape.com

LovetoEscape.com/hotels/67049/hotel-weber.htm