

## Hotellerie Du Bas-Breau



### Contact Details:

22 Rue Grande  
Barbizon  
Seine-et-Marne  
77630  
France

€ 150.00 - € 430.00 per night

The Hotellerie Du Bas-Breau is a 4 Star Hotel in Seine-et-Marne. Features include swimming pool.

### Facilities:

- **Outside Area:**  
Swimming Pool
- **Suitable For:**  
Romantic getaways, Short Breaks

### Room Details:

20 Bedrooms

### About Barbizon and Seine-et-Marne

The Hotellerie Du Bas-Breau, 4 Star Hotel is in Barbizon , Seine-et-Marne, Ile-De-France Paris Region, France. The address is 22 Rue Grande, Barbizon , 77630.

## Recommended Attractions

### 1. Goodwood

*Art Gallery, Historic Buildings and Monuments, Nature Reserve, Parks Gardens and Woodlands, Tours and Trips, Visitor Centres and Museums, Childrens Attractions, Zoos Farms and Wildlife Parks, Bistros and Brasseries, Cafes Coffee Shops and Tearooms, Horse Riding and Pony Trekking, Shooting and Fishing, Walking and Climbing*



Motor circuit, Stately Home, Racecourse, Aerodrome, Forestry, Organic Farm Shop, Festival of Speed, Goodwood Revival

Chichester, PO18 0PX, West Sussex, England

### 2. Goodwood Races

*Festivals and Events, Horse Racing*



Under the family of the Duke of Richmond, Goodwood Races sits only five miles north of the town of Chichester.

Chichester, PO18 0PS, West Sussex, England

### 3. Arundel Castle and Gardens

*Historic Buildings and Monuments, Parks Gardens and Woodlands*



This converted Castle and Stately Home is over 1000 years old, and sits on the bank of the River Arun in West Sussex

Arundel, BN18 9AB, West Sussex, England

### 4. Chichester Cathedral

*Historic Buildings and Monuments, Tours and Trips*



This 900 Year Old Cathedral has been visited millions of times by people of all faiths and denominations.

Chichester, PO19 1PX, West Sussex, England

### 5. Petworth House

*Historic Buildings and Monuments, Parks Gardens and Woodlands*



Petworth House is a grade 1 listed building from the 17th Century. Set in an idyllic 700-acre Deer Park, it makes a great day out for viewing the historic building and walking in the verdant park surrounding it.

Petworth, GU28 0AE, West Sussex, England

## 6. Bucklers Hard

Visitor Centres and Museums, Childrens Attractions



Bucklers Hard is a 18th century maritime village which is situated on the Beaulieu River, it has a stunning Marina and plenty to see in the village.

Brockenhurst, SO42 7XB, Hampshire, England

## 7. Beaulieu Estate

Historic Buildings and Monuments, Visitor Centres and Museums, Childrens Attractions



Beaulieu is situated in the New Forest National Park, it is the perfect place for a fun day including museums, the historic abbey and the list goes on

Brockenhurst, SO42 7ZN, Hampshire, England

## 8. Paultons Park

Theme Parks



Paultons Family Theme Park is a great day out, there are a wide selection of rides allowing you to have the most fun and exciting day out.

The New Forest, SO51 6AL, Hampshire, England

## 9. Chateau de Hautefort

Historic Buildings and Monuments, Parks Gardens and Woodlands



Magnificent 17c Castle perched on a hill in a beautiful area of France.

Hautefort, 24390, Dordogne, France

"This chateau is off the hook."

 **Highly Recommended by Hotellerie Du Bas-Breau!**

## 10. Blackpool Sands Beach Devon

Beaches, Childrens Attractions, Cafes Coffee Shops and Tearooms, Shops, Sailing and Watersports



Award-winning family beach with turquoise blue sea giving it an almost Mediterranean feel.

Dartmouth, TQ6 0RG, Devon, England

 **Highly Recommended by Hotellerie Du Bas-Breau!**

**11. Slapton Sands and Torcross**

*Beaches, Childrens Attractions, Sailing and Watersports*

Fantastic pebble beach in Devon

Slapton, TQ6, Devon, England



**Highly Recommended by Hotellerie Du Bas-Breau!**

**12. Babbacombe Model Village**

*Childrens Attractions*



Thousands of miniature buildings, people and vehicles capture the essence of England's past, present and future

Babbacombe, TQ1 3LA, Devon, England

**Highly Recommended by Hotellerie Du Bas-Breau!**

**13. Exmoor National Park**

*Parks Gardens and Woodlands, Horse Riding and Pony Trekking, Shooting and Fishing, Walking and Climbing*



Beautiful national park spanning Somerset and Devon

Dulverton, TA22 9HL, Somerset, England

**Highly Recommended by Hotellerie Du Bas-Breau!**

**14. Dunster Castle**

*Historic Buildings and Monuments, Parks Gardens and Woodlands*

National Trust Property with subtropical terraced garden

Dunster, TA24 6SL, Somerset, England



**Highly Recommended by Hotellerie Du Bas-Breau!**


**15. Quince Honey Farm**

*Visitor Centres and Museums, Childrens Attractions, Zoos Farms and Wildlife Parks, Shops*



World famous honey farm - the largest in the country

South Molton, EX36 3AZ, Devon, England

 Highly Recommended by Hotellerie Du Bas-Breau!

### 16. Lynton and Barnstaple Railway


*Tours and Trips, Cafes Coffee Shops and Tearooms, Railways*



A restored narrow gauge steam railway in the Exmoor National Park area of North Devon. One mile of the original 19 miles has so far been re-opened.

Martinhoe Cross, Parracombe, EX31 4RA, Devon, England

**Phone:** 01598 763487

 Highly Recommended by Hotellerie Du Bas-Breau!


### 17. Westward Ho! Beach

*Beaches, Childrens Attractions*



Over 2 miles of sandy beach in North Devon

Westward Ho, TQ1 , Devon, England

 Highly Recommended by Hotellerie Du Bas-Breau!

### 18. Saunton Sands Beach

*Beaches, Childrens Attractions, Sailing and Watersports*



3 miles long sandy beach, ideal for families and popular with surfers

Saunton, EX33, Devon, England

 Highly Recommended by Hotellerie Du Bas-Breau!

### 19. Lanhydrock

*Historic Buildings and Monuments, Parks Gardens and Woodlands, Visitor Centres and Museums, Childrens Attractions, Indoor and Outdoor Play Areas, Cafes Coffee Shops and Tearooms, Restaurants*



Magnificent late Victorian country house with extensive servants' quarters, gardens and wooded estate

Bodmin, PL30 5AD, Cornwall, England

 Highly Recommended by Hotellerie Du Bas-Breau!

### 20. Lost Gardens of Heligan

*Parks Gardens and Woodlands*



One of the most popular botanical gardens in the UK

St Austell, PL26 6EN, Cornwall, England

"A great day out for everyone. Highly recommended by us as a family. Plenty of space for kids to run around. Beautiful gardens and walks."

**Highly Recommended by Hotellerie Du Bas-Breau!**

### 21. Horse riding holidays in North Devon Croyde

*Childrens Attractions, Horse Riding and Pony Trekking*



Roylands riding stables cater for all abilities and offer horse riding holidays.

Croyde, EX33, Devon, England

**Highly Recommended by Hotellerie Du Bas-Breau!**

### 22. h2outdoor Adventure Activities North Devon

*Tours and Trips, Cycling and Mountain Bikes, Horse Riding and Pony Trekking, Sailing and Watersports, Walking and Climbing, Guided Walks, Guided Tours and Day Trips*



A fantastic selection of adventure activities in North Devon. Sea kayaking, canoeing, surfing, coasteering, mountain biking, pony trekking & high ropes are just some of the activities we offer. Suitable for children, groups, stag/hen & corporate

Woolacombe, EX34 7BZ, Devon, England

**Highly Recommended by Hotellerie Du Bas-Breau!**

### 23. The Milky Way Adventure Park

*Visitor Centres and Museums, Childrens Attractions, Indoor and Outdoor Play Areas*



North Devon's largest undercover family attraction.

Bideford, EX39 5RY, Devon, England

**Highly Recommended by Hotellerie Du Bas-Breau!**

### 24. Tintagel and Tintagel Castle

*Beaches, Historic Buildings and Monuments, Lochs Lakes and Waterfalls, Parks Gardens and Woodlands, Visitor Centres and Museums, Childrens Attractions, Cafes Coffee Shops and Tearooms, Pubs and Bars, Shops*



Breathtaking ruined castle on the Cornish Coast - mythical home of King Arthur

Tintagel, PL34, Cornwall, England

 **Highly Recommended by Hotellerie Du Bas-Breau!**

---

### 25. Newquay Zoo

*Zoos Farms and Wildlife Parks*



One of the nations's best zoos, home of many of the world's endangered species.

Newquay, TR7 2LZ, Cornwall, England

 **Highly Recommended by Hotellerie Du Bas-Breau!**

---

### 26. Fistral Beach

*Beaches, Sailing and Watersports*



World Famous surfing Beach in Newquay, Cornwall

Newquay, Cornwall, Cornwall, England

 **Highly Recommended by Hotellerie Du Bas-Breau!**

---

### 27. Lundy Island

*Beaches, Tours and Trips, Childrens Attractions, Pubs and Bars, Walking and Climbing*



Lundy Island and Nature Reserve

Bideford, EX39 2LY, Devon, England

 **Highly Recommended by Hotellerie Du Bas-Breau!**

---

### 28. Nick Vowles - Accommodation

*Individual*

Paris, 75 019, Paris, France



### 29. Parc interrégional du Marais poitevin

*Lochs Lakes and Waterfalls, Nature Reserve, Parks Gardens and Woodlands*



The Marais Poitevin is a large area of marshland in Western France, a remnant of the former Gulf of Poitou (the name meaning 'Poitou's Marsh', 'Marsh of Poitou region').

Coulon, 79510, Vendee, France

### 30. Vallee des Singes Monkey Valley

*Parks Gardens and Woodlands, Childrens Attractions, Zoos Farms and Wildlife Parks*



Wildlife park where monkeys, apes and primates roam freely in a beautiful setting.

Le Gureau, 86700, Vienne, France

### 31. Aquarium du Périgord Noir

*Nature Reserve, Aquariums, Childrens Attractions*



The Périgord Noir Aquarium invites you to discover a fascinating world of 3 million litres of water, where you can watch in natural light, more than 6000 fishes in their natural surroundings.

LE BUGUE, 24 260, Dordogne, France

### 32. Canoe Vacances

*Historic Buildings and Monuments, Lochs Lakes and Waterfalls, Parks Gardens and Woodlands, Tours and Trips, Sailing and Watersports, Boat Trips, Guided Tours and Day Trips*



Canoe and Kayaks for 2, 3 and 4 people. Courses for 9km, 16km and 25km. Snack bar and car park

LA ROQUE GAGEAC, 24 250, Dordogne, France

### 33. Le Château des Milandes

*Historic Buildings and Monuments, Parks Gardens and Woodlands, Tours and Trips, Visitor Centres and Museums*



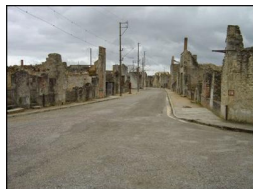
Discover a historical heritage – Built in 1489, the castle is remarkable for the richness of its outdoor sculptures. The newly renovated gardens will welcome you for an extraordinary visit and discovery of over 10 rooms in this Renaissance residence

CASTELNAUD LA CHAPELLE, 24 250, Dordogne, France

### 34. Oradour Sur Glane

*Historic Buildings and Monuments, Visitor Centres and Museums*





The famous 'martyr Village'; subject to a terrible Nazi massacre in World War Two

Oradour-sur-Glane, 87520, Haute-Vienne, France

### 35. Parc Animalier de la Colline Enchantee

*Parks Gardens and Woodlands, Childrens Attractions, Zoos Farms and Wildlife Parks*



Animal Park and Farm

Hiesse, 16490, Haute-Vienne, France

### 36. Monet's gardens in Giverny

*Historic Buildings and Monuments, Parks Gardens and Woodlands*



The house and gardens of painter Claude Monet

Giverny, 27620, Eure, France

### 37. Museum of impressionisms

*Art Gallery, Visitor Centres and Museums*



exhibitions of painters from impressionism and its continuations.

Giverny, 27620, Eure, France

### 38. Chateau de Valençay

*Historic Buildings and Monuments*



Château de Valençay is a residence of the d'Estampes and Talleyrand-Périgord families in the commune of Valençay, the Indre département of France. The castle and park offer an attraction suitable for individuals, families, groups and schools.

Valençay, 36600, Indre, France

### 39. Chateau de Amboise

*Historic Buildings and Monuments*



The royal Château at Amboise is a château located in Amboise, in the Indre-et-Loire département of the Loire Valley in France.

Amboise, 37403, Indre-et-Loire, France

#### 40. Parc Leonardo Da Vinci

*Art Gallery, Historic Buildings and Monuments, Visitor Centres and Museums*



Château du Clos Lucé - Parc Leonardo da Vinci; Leonardo da Vinci's residence

Amboise - Val de Loire France, 37400, Indre-et-Loire, France

#### 41. Villandry

*Historic Buildings and Monuments, Tours and Trips, Visitor Centres and Museums*



<http://www.chateauvillandry.fr/en/>

Villandry, 37510, Indre-et-Loire, France

#### 42. La Source

*Shops*



French Boutique in the spa town of bagnoles de lorne

bagnoles de lorne, 61140, Orne, France

#### 43. Chateaux Lassay les Chateaux

*Historic Buildings and Monuments, Childrens Attractions*



The Châteaux, one of the best preserved medieval Châteaux in France, with its working drawbridge and barbican being just one of its remarkable features

Lassay Les Chateaux, 53110, Mayenne, France

#### 44. Creuse Carp

*Shooting and Fishing*



Carp and coarse fishing on three scenic lakes. Catch carp in excess of 40 lbs

Nouzerines, 23600, Creuse, France

#### 45. Jublains Museum & Archaeological Site

*Historic Buildings and Monuments, Visitor Centres and Museums*



The museum, presents the Gallic era and the Antiquity of the whole department of la Mayenne, with Fort, theatre, temple, public baths under the church.

Jublains, 53160, Mayenne, France

#### 46. Éguzon (or Chambon) lake

*Beaches, Lochs Lakes and Waterfalls*

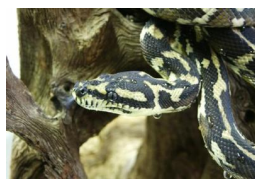


The lake lies in the heart of the Creuse valley near Éguzon-Chantôme and covers 312 hectares.

Eguzon, 36070, Indre, France

#### 47. Snake Island

*Visitor Centres and Museums, Childrens Attractions, Zoos Farms and Wildlife Parks*



An island with a variety of reptiles and animals.

La Trimouille, 86290, Vienne, France

#### 48. Lac Mondon

*Lochs Lakes and Waterfalls, Childrens Attractions, Fitness and Leisure Centres*



Lakeside open air pool with waterslide. A beautiful lake for leisure and fishing, with a campsite and bar restaurant on site, and a lovely open air sw

Mailhac sur benaize, 87160, Haute-Vienne, France



#### More Information

For more information, you can find us under ref.nr. 67093 on LovetoEscape.com

[LovetoEscape.com/hotels/67093/hotellerie-du-bas-breau.htm](https://LovetoEscape.com/hotels/67093/hotellerie-du-bas-breau.htm)