

---

**SHALOM**

---



---

**merle morris**

---

Reynalton Kilgetty  
Pembrokeshire  
SA680PH  
Wales

---

**£ 406.00 - £ 1,530.00 per week**

**5\* Holiday bungalow with outdoor heated pool set in the heart of Pembrokeshire, only minutes from award-winning beaches and famous Theme Parks. Ideally situated for Walking, Fishing , Beaches, Castles & Places of Historical Interest.**

**Facilities:****Room Details:**

**Sleeps: 6**

**3 Bedrooms**

**1 Bathroom**

## Recommended Attractions

### 1. Clerkenhill Adventure Farm and Frizbee Golf Course

*Childrens Attractions, Zoos Farms and Wildlife Parks*

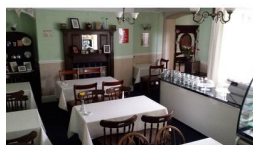


Adventure farm and trail with frizbee golf!

Haverfordwest, SA62 4PE,  
Pembrokeshire, Wales

### 2. Saint Teresas Restaurant and Tea Room in Tenby West Wales

*Beaches, Festivals and Events, Visitor Centres and Museums, Cafes Coffee Shops and Tearooms, Restaurants*



We pride ourselves on Freshly made food, locally sourced and prepared daily. Our friendly staff will help you with your drinks and serve you with a smile and cheer.

Tenby, SA70 7DL, Pembrokeshire,  
Wales

**Phone:** 01834 845514

### 3. Ocean Commotion

*Childrens Attractions, Indoor and Outdoor Play Areas*

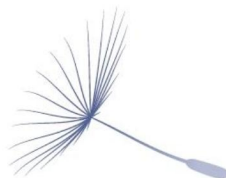


An indoor childrens playcentre set out over 5 levels. Open 7 days a week all year round.

Tenby, SA70 7HU, Pembrokeshire,  
Wales

### 4. Stackpole Estate

*Historic Buildings and Monuments, Parks Gardens and Woodlands, Visitor Centres and Museums, Cafes Coffee Shops and Tearooms, Cycling and Mountain Bikes, Walking and Climbing*



Beautiful and varied stretch of the Pembrokeshire coast

Stackpole, SA71 5DQ, Pembrokeshire,  
Wales

### 5. Presili Hills

*Historic Buildings and Monuments, Walking and Climbing*



A range of hills in north Pembrokeshire in West Wales.

Pembrokeshire, Wales, Pembrokeshire,  
Wales

## 6. The Gwaun Valley

*Nature Reserve, Parks Gardens and Woodlands, Walking and Climbing*



A tranquil wooded valley in Pembrokeshire Wales

Fishguard, Wales, Pembrokeshire, Wales

## 7. Pentre Ifan

*Historic Buildings and Monuments*



One of the largest and best preserved neolithic sites in Wales

Newport, Wales, Pembrokeshire, Wales

## 8. Castell Henllys

*Historic Buildings and Monuments, Visitor Centres and Museums, Childrens Attractions*



A reconstructed Iron Age hillfort owned by the Pembrokeshire Coast National Park

Crymych, SA41 3UT, Pembrokeshire, Wales

## 9. Pembrokeshire Bike Shop, Fishguard, Pembs

*Cycling and Mountain Bikes*



We offer Trek hire bikes with helmets, pumps and repair kits. We also hire out children's tag a longs, trailers, child seats, maps, guide books etc.

Fishguard, SA65 9HL, Pembrokeshire, Wales

## 10. Welsh Wildlife Centre

*Parks Gardens and Woodlands, Tours and Trips, Walking and Climbing*



The stunning Welsh Wildlife Centre stands within the Teifi Marshes Nature Reserve on the banks of the River Teifi.

Cilgerran, SA370EX, Pembrokeshire, Wales

## 11. Newport Links Golf Club

*Golf*



Golf course in the Pembrokeshire Coast National Park

Newport, SA42 0NR, Pembrokeshire,  
Wales

---

## 12. Newport Sands Beach

*Beaches*



Popular Sandy Beach in the Pembrokeshire Coast National Park

Newport, SA42, Pembrokeshire, Wales

---

## 13. Ceibwr Bay

*Beaches, Nature Reserve*



Old Smugglers Cove now a haven for wildlife

Ceibwr, North Pembrokeshire,  
Pembrokeshire, Wales

---

## 14. St Dogmaels Abbey

*Historic Buildings and Monuments*



Ruins of a Welsh Abbey founded in 1115

Cardigan Bridge, West Wales,  
Pembrokeshire, Wales



### More Information

For more information, you can find us under ref.nr. 71944 on LovetoEscape.com

[LovetoEscape.com/holiday-home-villas/71944/shalom.htm](https://LovetoEscape.com/holiday-home-villas/71944/shalom.htm)