

## Hayloft Self Catering Holiday Cottage Pittenweem Scotland



### Contact Details:

Daytime Phone: 01244 356890

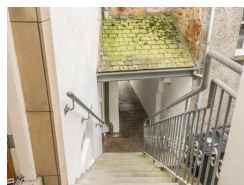
Pittenweem

Fife

KY10 2NQ

Scotland

£ 327.00 - £ 827.00 per week



**A converted hayloft, set over the first and second floors, in the fishing village of Pittenweem in Fife, with one twin bedroom and a double sofa bed accommodating up to four people.**

### Facilities:

- **Communications:**  
Broadband Internet, Wifi
- **Entertainment:**  
DVD Player, TV
- **Heat:**  
Central Heating
- **Kitchen:**  
Cooker, Dishwasher, Fridge, Fridge/Freezer, Oven
- **Laundry:**  
Washing Machine
- **Outside Area:**  
Enclosed Garden, Outside Seating, Patio \ Outside Dining Area
- **Price Included:**  
Electricity and Fuel, Linen, Towels
- **Special:**  
Cots Available
- **Standard:**  
Very Good
- **Suitable For:**

### Room Details:

- Sleeps: 4**
- 1 En-Suite Twin Room**
- 2 Bathrooms**

Families, Romantic getaways, Short Breaks

## About Pittenweem and Fife

The village of Pittenweem is one of the busiest fishing ports along the East Neuk of Fife and, as such, is a popular attraction for tourists. Its delightful harbour is surrounded by inns and restored traditional buildings, which all add to its charm. The village centre sits a few streets back from the shore and boasts a shop, bakers, a Post Office and a café, plus several bars, restaurants and galleries. With St Andrews and Edinburgh easily accessible, there is so much for the visitor to enjoy.

## Recommended Attractions

### 1. Glamis Castle

*Historic Buildings and Monuments*



Childhood home of Her Majesty Queen Elisabeth The Queen Mother

Glamis, DD8 1RJ, Angus and Dundee, Scotland

 **Highly Recommended by Hayloft Self Catering Holiday Cottage Pittenweem Scotland!**

### 2. Fife Animal Park

*Childrens Attractions, Zoos Farms and Wildlife Parks, Cafes Coffee Shops and Tearooms, Restaurants*



A fun day out for all the family at Fife's animal kingdom

Collesie, KY15 7UT, Fife, Scotland

**Phone:** 01337 831830

### 3. Edinburgh Castle

*Historic Buildings and Monuments, Visitor Centres and Museums*



Magnificent castle dominating the Edninburgh skyline

Edinburgh, EH1 2NG, Edinburgh Region, Scotland

### 4. Edinburgh Butterfly and Insect World

*Zoos Farms and Wildlife Parks*



At Dobbies garden centre

Midlothian, EH18 1AZ, Edinburgh Region, Scotland

### 5. Deep Sea World

*Visitor Centres and Museums, Aquariums, Childrens Attractions, Zoos Farms and Wildlife Parks*



BUBBLEMAKER SESSIONS - Discover Scuba Diving for children!  
Meet our giagantic sharks (from a safe distance Mum!)

North Queensferry, KY11 1JR, Fife, Scotland



**More Information**

For more information, you can find us under ref.nr. 74170 on LovetoEscape.com

[LovetoEscape.com/holiday-cottages/74170/hayloft-self-catering-holiday-cottage-pittenweem-scotland.htm](https://LovetoEscape.com/holiday-cottages/74170/hayloft-self-catering-holiday-cottage-pittenweem-scotland.htm)