

## Yr Wyddfa

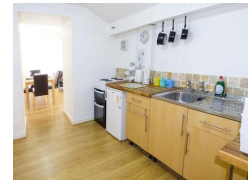


### Contact Details:

Daytime Phone: 01244 356890

Bangor  
Gwynedd  
LL57 4UW  
Wales

£ 278.00 - £ 695.00 per week



This ground floor apartment is set beneath the owner's home in the hamlet of Glasinfryn, 2 miles from Bangor and sleeps two people in one bedroom.

### Facilities:

- **Communications:**  
Broadband Internet
- **Entertainment:**  
TV
- **Kitchen:**  
Cooker, Fridge
- **Price Included:**  
Linen, Towels
- **Room Features:**  
Satellite TV/ Freeview

### Room Details:

**Sleeps: 2**

**1 Double Room**

**1 Bathroom**

### About Bangor and Gwynedd

Bangor is a university town on the North Wales coast with a large range of shops, bars and restaurants. It is the main crossing point for the Isle of Anglesey with two road bridges across the Menai Strait. Across the water, the castle and pier at Beaumaris make a lovely day out, or you can catch a boat to enjoy a trip out to Puffin Island. The Anglesey Coastal Path takes in beautiful scenery, and the island is home to many fine beaches including Rhosneigr, Trearddur Bay and Red Wharf Bay.

## Recommended Attractions

### 1. Goodwood

*Art Gallery, Historic Buildings and Monuments, Nature Reserve, Parks Gardens and Woodlands, Tours and Trips, Visitor Centres and Museums, Childrens Attractions, Zoos Farms and Wildlife Parks, Bistros and Brasseries, Cafes Coffee Shops and Tearooms, Horse Riding and Pony Trekking, Shooting and Fishing, Walking and Climbing*



Motor circuit, Stately Home, Racecourse, Aerodrome, Forestry, Organic Farm Shop, Festival of Speed, Goodwood Revival

Chichester, PO18 0PX, West Sussex, England

### 2. Goodwood Races

*Festivals and Events, Horse Racing*



Under the family of the Duke of Richmond, Goodwood Races sits only five miles north of the town of Chichester.

Chichester, PO18 0PS, West Sussex, England

### 3. Arundel Castle and Gardens

*Historic Buildings and Monuments, Parks Gardens and Woodlands*



This converted Castle and Stately Home is over 1000 years old, and sits on the bank of the River Arun in West Sussex

Arundel, BN18 9AB, West Sussex, England

### 4. Chichester Cathedral

*Historic Buildings and Monuments, Tours and Trips*



This 900 Year Old Cathedral has been visited millions of times by people of all faiths and denominations.

Chichester, PO19 1PX, West Sussex, England

### 5. Petworth House

*Historic Buildings and Monuments, Parks Gardens and Woodlands*



Petworth House is a grade 1 listed building from the 17th Century. Set in an idyllic 700-acre Deer Park, it makes a great day out for viewing the historic building and walking in the verdant park surrounding it.

Petworth, GU28 0AE, West Sussex, England

## 6. Bucklers Hard

Visitor Centres and Museums, Childrens Attractions



Bucklers Hard is a 18th century maritime village which is situated on the Beaulieu River, it has a stunning Marina and plenty to see in the village.

Brockenhurst, SO42 7XB, Hampshire, England

## 7. Beaulieu Estate

Historic Buildings and Monuments, Visitor Centres and Museums, Childrens Attractions



Beaulieu is situated in the New Forest National Park, it is the perfect place for a fun day including museums, the historic abbey and the list goes on

Brockenhurst, SO42 7ZN, Hampshire, England

## 8. Paultons Park

Theme Parks



Paultons Family Theme Park is a great day out, there are a wide selection of rides allowing you to have the most fun and exciting day out.

The New Forest, SO51 6AL, Hampshire, England

## 9. Lynton and Barnstaple Railway

Tours and Trips, Cafes Coffee Shops and Tearooms, Railways



A restored narrow gauge steam railway in the Exmoor National Park area of North Devon. One mile of the original 19 miles has so far been re-opened.

Martinhoe Cross, Parracombe, EX31 4RA, Devon, England

**Phone:** 01598 763487

 **Highly Recommended by Yr Wyddfa!**

## 10. h2outdoor Adventure Activities North Devon

Tours and Trips, Cycling and Mountain Bikes, Horse Riding and Pony Trekking, Sailing and Watersports, Walking and Climbing, Guided Walks, Guided Tours and Day Trips



A fantastic selection of adventure activities in North Devon. Sea kayaking, canoeing, surfing, coasteering, mountain biking, pony trekking & high ropes are just some of the activities we offer. Suitable for children, groups, stag/hen & corporate

Woolacombe, EX34 7BZ, Devon, England

 **Highly Recommended by Yr Wyddfa!**

## 11. Dunster Castle

Historic Buildings and Monuments, Parks Gardens and Woodlands



National Trust Property with subtropical terraced garden

Dunster, TA24 6SL, Somerset, England

 **Highly Recommended by Yr Wyddfa!**

## 12. Lundy Island

*Beaches, Tours and Trips, Childrens Attractions, Pubs and Bars, Walking and Climbing*

Lundy Island and Nature Reserve

Bideford, EX39 2LY, Devon, England

 **Highly Recommended by Yr Wyddfa!**

## 13. Horse riding holidays in North Devon Croyde

*Childrens Attractions, Horse Riding and Pony Trekking*

Roylands riding stables cater for all abilities and offer horse riding holidays.

Croyde, EX33, Devon, England

 **Highly Recommended by Yr Wyddfa!**

## 14. Saunton Sands Beach

*Beaches, Childrens Attractions, Sailing and Watersports*

3 miles long sandy beach, ideal for families and popular with surfers

Saunton, EX33, Devon, England

 **Highly Recommended by Yr Wyddfa!**

## 15. Westward Ho! Beach

*Beaches, Childrens Attractions*

Over 2 miles of sandy beach in North Devon

Westward Ho, TQ1 , Devon, England

 **Highly Recommended by Yr Wyddfa!**

## 16. Quince Honey Farm

Visitor Centres and Museums, Childrens Attractions, Zoos Farms and Wildlife Parks, Shops



World famous honey farm - the largest in the country

South Molton, EX36 3AZ, Devon, England

Highly Recommended by Yr Wyddfa!

## 17. Exmoor National Park

Parks Gardens and Woodlands, Horse Riding and Pony Trekking, Shooting and Fishing, Walking and Climbing



Beautiful national park spanning Somerset and Devon

Dulverton, TA22 9HL, Somerset, England

Highly Recommended by Yr Wyddfa!

## 18. The Milky Way Adventure Park

Visitor Centres and Museums, Childrens Attractions, Indoor and Outdoor Play Areas



North Devon's largest undercover family attraction.

Bideford, EX39 5RY, Devon, England

Highly Recommended by Yr Wyddfa!

## 19. Tintagel and Tintagel Castle

Beaches, Historic Buildings and Monuments, Lochs Lakes and Waterfalls, Parks Gardens and Woodlands, Visitor Centres and Museums, Childrens Attractions, Cafes Coffee Shops and Tearooms, Pubs and Bars, Shops



Breathtaking ruined castle on the Cornish Coast - mythical home of King Arthur

Tintagel, PL34, Cornwall, England

Highly Recommended by Yr Wyddfa!

## 20. Babbacombe Model Village

Childrens Attractions



Thousands of miniature buildings, people and vehicles capture the essence of England's past, present and future

Babbacombe, TQ1 3LA, Devon, England

 Highly Recommended by Yr Wyddfa!

---

## 21. Lanhydrock

*Historic Buildings and Monuments, Parks Gardens and Woodlands, Visitor Centres and Museums, Childrens Attractions, Indoor and Outdoor Play Areas, Cafes Coffee Shops and Tearooms, Restaurants*



Magnificent late Victorian country house with extensive servants' quarters, gardens and wooded estate

Bodmin, PL30 5AD, Cornwall, England

 Highly Recommended by Yr Wyddfa!

---

## 22. Fistral Beach

*Beaches, Sailing and Watersports*



World Famous surfing Beach in Newquay, Cornwall

Newquay, Cornwall, Cornwall, England

 Highly Recommended by Yr Wyddfa!

---

## 23. Newquay Zoo

*Zoos Farms and Wildlife Parks*



One of the nations's best zoos, home of many of the world's endangered species.

Newquay, TR7 2LZ, Cornwall, England

 Highly Recommended by Yr Wyddfa!

---

## 24. Blackpool Sands Beach Devon

*Beaches, Childrens Attractions, Cafes Coffee Shops and Tearooms, Shops, Sailing and Watersports*



Award-winning family beach with turquoise blue sea giving it an almost Mediterranean feel.

Dartmouth, TQ6 0RG, Devon, England

 Highly Recommended by Yr Wyddfa!

---



**25. Slapton Sands and Torcross***Beaches, Childrens Attractions, Sailing and Watersports*

Fantastic pebble beach in Devon

Slapton, TQ6, Devon, England



 **Highly Recommended by Yr Wyddfa!**

**26. The Cross Keys Restaurant in Kippen***Pubs and Bars, Restaurants*

Traditional and comfortable inn situated in the village of Kippen, Stirlingshire. We serve food all day from soups to sirloins, with home made pies and puddings to finish. Every Sunday is roast day featuring two types of roast. Children Welcome.

Kippen, FK8 3DN, Stirlingshire, Scotland

**Phone:** 01786 870293

 **Highly Recommended by Yr Wyddfa!**

**27. Lost Gardens of Heligan***Parks Gardens and Woodlands*

One of the most popular botanical gardens in the UK

St Austell, PL26 6EN, Cornwall, England

*"A great day out for everyone. Highly recommended by us as a family. Plenty of space for kids to run around. Beautiful gardens and walks."*

 **Highly Recommended by Yr Wyddfa!**

**28. Gloagburn Farm Shop and Coffee Shop near Perth***Cafes Coffee Shops and Tearooms, Shops*

The Gloagburn Farm Shop and Café are a local business of high quality offering local produce as well as a café.

Tibbermore, PH1 1QL, Perth and Kinross, Scotland

 **Highly Recommended by Yr Wyddfa!**

**29. The Black Watch Museum***Visitor Centres and Museums*



Regimental Museum of the Proud and Illustrious Black Watch Regiment in Perth Scotland

Perth, PH1 5HR, Perth and Kinross, Scotland

Highly Recommended by Yr Wyddfa!

### 30. Scone Palace

*Historic Buildings and Monuments, Parks Gardens and Woodlands*



Scone Palace occupies a unique position in Scottish History

Perth, PH2 6BD, Perth and Kinross, Scotland

Highly Recommended by Yr Wyddfa!

### 31. Scone Palace

*Historic Buildings and Monuments, Parks Gardens and Woodlands*



Former crowning place of the Kings of Scotland, stunning setting in beautiful grounds. A stately home to visit.

Perth, PH2 6BD, Perth and Kinross, Scotland

Highly Recommended by Yr Wyddfa!

### 32. The Scottish Crannog Centre

*Historic Buildings and Monuments, Visitor Centres and Museums*



Archaeological Open-Air Museum

Kenmore Aberfeldy, PH15 2HY, Perth and Kinross, Scotland

Highly Recommended by Yr Wyddfa!

### 33. Glamis Castle

*Historic Buildings and Monuments*



Childhood home of Her Majesty Queen Elisabeth The Queen Mother

Glamis, DD8 1RJ, Angus and Dundee, Scotland

Highly Recommended by Yr Wyddfa!

### 34. Enchanted Forest in Perthshire

*Festivals and Events, Lochs Lakes and Waterfalls, Parks Gardens and Woodlands, Live Music and Comedy*





The Enchanted Forest offers visitors a unique opportunity to experience the outdoors, at night and with spectacular imagery. You will experience a lighting show that is out of this world.

Pitlochry, PH16 5LA, Perth and Kinross, Scotland

Highly Recommended by Yr Wyddfa!

### 35. Blair Castle

*Historic Buildings and Monuments, Parks Gardens and Woodlands, Cafes Coffee Shops and Tearooms*



Historic Castle

Blair Atholl, PH18 5TL, Perth and Kinross, Scotland

Highly Recommended by Yr Wyddfa!

### 36. Balmoral Castle

*Historic Buildings and Monuments, Parks Gardens and Woodlands, Visitor Centres and Museums*



5 Star visitor attraction set amongst the magnificent scenery of Royal Deeside

Balmoral, AB35 5TB, Aberdeenshire, Scotland

Highly Recommended by Yr Wyddfa!

### 37. Dunrobin Castle Golspie Sutherland

*Historic Buildings and Monuments, Visitor Centres and Museums*



Seat of the Duke of Sutherland. Originally built in 1401 and rebuilt in 1835. Castle Tour and Falconry Displays a Must. Open between April and Oct

Golspie, KW10 6RS, The Highlands, Scotland

*"Castle of fairy tales which looks dramatic from the sea. Falconry display and museum worth visiting too."*

Highly Recommended by Yr Wyddfa!

### 38. Brora golf club

Golf



Brora Golf Club, a traditional links course, designed by James Braid, where little has changed since he left in 1923.

Brora, KW9 6QS, The Highlands, Scotland

*"Wonderful Braid course in top 100 best courses UK and Ireland."*

Highly Recommended by Yr Wyddfa!

**39. Loch Venachar***Lochs Lakes and Waterfalls*

Loch Venachar, The Trossachs

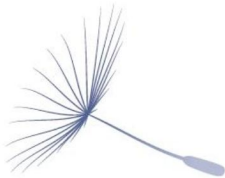
Callander, FK8 3EN, Stirlingshire,  
Scotland*"There is a great walk down the southside of the Loch leading past the sailing club and if you branch right you can reach the Byre Inn."*

By Yr Wyddfa

**40. Vaynol Arms Pentir restaurant and pub***Pubs and Bars, Restaurants*

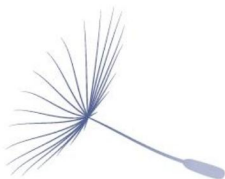
This rural restaurant and pub has a well-deserved reputation for the quality of its meals

Bangor, LL57 4EA, Gwynedd, Wales

**41. Penrhyn Castle***Historic Buildings and Monuments, Parks Gardens and Woodlands, Visitor Centres and Museums, Cafes Coffee Shops and Tearooms*

19th-century fantasy 'castle' with spectacular contents and grounds

Bangor, LL57 4HN, Gwynedd, Wales

**42. Plas Newydd***Historic Buildings and Monuments, Parks Gardens and Woodlands, Cafes Coffee Shops and Tearooms*

Home of the Marquess of Anglesey, with spectacular views of Snowdonia

Llanfairpwll, LL61 6DQ, Anglesey, Wales

**43. Surf-Lines Adventures & Shop in Snowdonia Wales***Beaches, Sailing and Watersports*

Choose from canoeing, kayaking, rock climbing, coastering and more! Based in Llanberis Snowdonia, we are proud to offer an exciting range of adventure days and weekends, specialist training courses etc.

Llanberis, LL55 4EL, Gwynedd, Wales

**Phone:** 01286879001

**44. Snowdon Mountain Railway***Railways*

Snowdon Mountain Railway

Llanbris, LL55 4TY, Gwynedd, Wales

**45. Redline Indoor Karting***Karting*

All weather family attraction Snowdonia North Wales

Caernarfon, LL55 2 BD, Gwynedd, Wales

**46. Bach Ventures***Sailing and Watersports, Walking and Climbing*

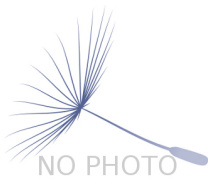
We offer a variety of skills courses in Rock Climbing, Kayaking, Canoeing and Mountain Navigation. These range from half day taster sessions to full

Waunfawr, LL547AJ, Gwynedd, Wales

**47. Caernarfon Castle***Historic Buildings and Monuments*

beautiful castle in North Wales- World Heritage site

Caernarfon, LL55 2AY?, Gwynedd, Wales

**48. Tree Top Adventure Snowdonia Betws y Coed***Childrens Attractions, Walking and Climbing*

Tree Top Adventure is a high level adventurous journey through the trees that involves negotiating a series of obstacles. Participants are fitted with

Betws-y-Coed, LL27 0JJ, County of Conwy, Wales



### More Information

For more information, you can find us under ref.nr. 79694 on LovetoEscape.com

[LovetoEscape.com/holiday-cottages/79694/yr-wyddfa.htm](https://LovetoEscape.com/holiday-cottages/79694/yr-wyddfa.htm)