

Poldark Cottage

**Contact Details:**

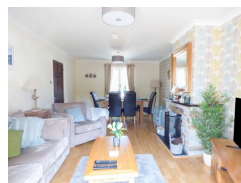
Daytime Phone: 01244 356890

Charlestown

PL25 3NH

England

£ 691.00 - £ 2,609.00 per week



This cottage is in the village of Charlestown near to St. Austell and can sleep six people in three bedrooms.

Facilities:

- **Communications:**
Broadband Internet
- **Entertainment:**
TV
- **Heat:**
Open Fire
- **Kitchen:**
Cooker, Dishwasher, Fridge
- **Laundry:**
Washing Machine
- **Outside Area:**
Enclosed Garden
- **Price Included:**
Linen, Towels

Room Details:

Sleeps: 6

3 Bedrooms

2 Bathrooms

About Charlestown and the area

A delightful and much sought-after coastal village of stone cottages and Regency houses, on the south coast near St. Austell. Famous for its collection of tall ships riding at anchor in the harbour, the shipwreck museum, excellent pubs and restaurants and easy access to the coastal path, it's the perfect holiday destination. It has even been used as a filming location, most well known for appearing in Poldark.

Recommended Attractions

1. Goodwood

Art Gallery, Historic Buildings and Monuments, Nature Reserve, Parks Gardens and Woodlands, Tours and Trips, Visitor Centres and Museums, Childrens Attractions, Zoos Farms and Wildlife Parks, Bistros and Brasseries, Cafes Coffee Shops and Tearooms, Horse Riding and Pony Trekking, Shooting and Fishing, Walking and Climbing



Motor circuit, Stately Home, Racecourse, Aerodrome, Forestry, Organic Farm Shop, Festival of Speed, Goodwood Revival

Chichester, PO18 0PX, West Sussex, England

2. Goodwood Races

Festivals and Events, Horse Racing



Under the family of the Duke of Richmond, Goodwood Races sits only five miles north of the town of Chichester.

Chichester, PO18 0PS, West Sussex, England

3. Arundel Castle and Gardens

Historic Buildings and Monuments, Parks Gardens and Woodlands



This converted Castle and Stately Home is over 1000 years old, and sits on the bank of the River Arun in West Sussex

Arundel, BN18 9AB, West Sussex, England

4. Chichester Cathedral

Historic Buildings and Monuments, Tours and Trips



This 900 Year Old Cathedral has been visited millions of times by people of all faiths and denominations.

Chichester, PO19 1PX, West Sussex, England

5. Petworth House

Historic Buildings and Monuments, Parks Gardens and Woodlands



Petworth House is a grade 1 listed building from the 17th Century. Set in an idyllic 700-acre Deer Park, it makes a great day out for viewing the historic building and walking in the verdant park surrounding it.

Petworth, GU28 0AE, West Sussex, England

6. Bucklers Hard

Visitor Centres and Museums, Childrens Attractions



Bucklers Hard is a 18th century maritime village which is situated on the Beaulieu River, it has a stunning Marina and plenty to see in the village.

Brockenhurst, SO42 7XB, Hampshire, England

7. Beaulieu Estate

Historic Buildings and Monuments, Visitor Centres and Museums, Childrens Attractions



Beaulieu is situated in the New Forest National Park, it is the perfect place for a fun day including museums, the historic abbey and the list goes on

Brockenhurst, SO42 7ZN, Hampshire, England

8. Paultons Park

Theme Parks



Paultons Family Theme Park is a great day out, there are a wide selection of rides allowing you to have the most fun and exciting day out.

The New Forest, SO51 6AL, Hampshire, England

9. Lost Gardens of Heligan

Parks Gardens and Woodlands



One of the most popular botanical gardens in the UK

St Austell, PL26 6EN, Cornwall, England

"A great day out for everyone. Highly recommended by us as a family. Plenty of space for kids to run around. Beautiful gardens and walks."

 **Highly Recommended by Poldark Cottage!**

10. Lanhydrock

Historic Buildings and Monuments, Parks Gardens and Woodlands, Visitor Centres and Museums, Childrens Attractions, Indoor and Outdoor Play Areas, Cafes Coffee Shops and Tearooms, Restaurants



Magnificent late Victorian country house with extensive servants' quarters, gardens and wooded estate

Bodmin, PL30 5AD, Cornwall, England

 Highly Recommended by Poldark Cottage!

11. Newquay Zoo

Zoos Farms and Wildlife Parks



One of the nations's best zoos, home of many of the world's endangered species.

Newquay, TR7 2LZ, Cornwall, England

 Highly Recommended by Poldark Cottage!

12. Fistral Beach

Beaches, Sailing and Watersports



World Famous surfing Beach in Newquay, Cornwall

Newquay, Cornwall, Cornwall, England

 Highly Recommended by Poldark Cottage!

13. Tintagel and Tintagel Castle

Beaches, Historic Buildings and Monuments, Lochs Lakes and Waterfalls, Parks Gardens and Woodlands, Visitor Centres and Museums, Childrens Attractions, Cafes Coffee Shops and Tearooms, Pubs and Bars, Shops



Breathtaking ruined castle on the Cornish Coast - mythical home of King Arthur

Tintagel, PL34, Cornwall, England

 Highly Recommended by Poldark Cottage!

14. The Milky Way Adventure Park

Visitor Centres and Museums, Childrens Attractions, Indoor and Outdoor Play Areas

North Devon's largest undercover family attraction.

Bideford, EX39 5RY, Devon, England



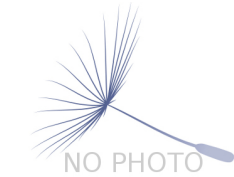
 Highly Recommended by Poldark Cottage!

15. Slapton Sands and Torcross

Beaches, Childrens Attractions, Sailing and Watersports

Fantastic pebble beach in Devon

Slapton, TQ6, Devon, England



 **Highly Recommended by Poldark Cottage!**

16. Blackpool Sands Beach Devon

Beaches, Childrens Attractions, Cafes Coffee Shops and Tearooms, Shops, Sailing and Watersports



Award-winning family beach with turquoise blue sea giving it an almost Mediterranean feel.

Dartmouth, TQ6 0RG, Devon, England

 **Highly Recommended by Poldark Cottage!**

17. Westward Ho! Beach

Beaches, Childrens Attractions

Over 2 miles of sandy beach in North Devon

Westward Ho, TQ1 , Devon, England



 **Highly Recommended by Poldark Cottage!**

18. Babbacombe Model Village

Childrens Attractions



Thousands of miniature buildings, people and vehicles capture the essence of England's past, present and future

Babbacombe, TQ1 3LA, Devon, England

 **Highly Recommended by Poldark Cottage!**

19. Lundy Island

Beaches, Tours and Trips, Childrens Attractions, Pubs and Bars, Walking and Climbing



Lundy Island and Nature Reserve

Bideford, EX39 2LY, Devon, England

 Highly Recommended by Poldark Cottage!

20. Saunton Sands Beach

Beaches, Childrens Attractions, Sailing and Watersports



3 miles long sandy beach, ideal for families and popular with surfers

Saunton, EX33, Devon, England

 Highly Recommended by Poldark Cottage!

21. Horse riding holidays in North Devon Croyde

Childrens Attractions, Horse Riding and Pony Trekking



Roylands riding stables cater for all abilities and offer horse riding holidays.

Croyde, EX33, Devon, England

 Highly Recommended by Poldark Cottage!

22. Quince Honey Farm

Visitor Centres and Museums, Childrens Attractions, Zoos Farms and Wildlife Parks, Shops



World famous honey farm - the largest in the country

South Molton, EX36 3AZ, Devon, England

 Highly Recommended by Poldark Cottage!

23. h2outdoor Adventure Activities North Devon

Tours and Trips, Cycling and Mountain Bikes, Horse Riding and Pony Trekking, Sailing and Watersports, Walking and Climbing, Guided Walks, Guided Tours and Day Trips



A fantastic selection of adventure activities in North Devon. Sea kayaking, canoeing, surfing, coasteering, mountain biking, pony trekking & high ropes are just some of the activities we offer. Suitable for children, groups, stag/hen & corporate

Woolacombe, EX34 7BZ, Devon, England

 Highly Recommended by Poldark Cottage!

24. Lynton and Barnstaple Railway

Tours and Trips, Cafes Coffee Shops and Tearooms, Railways



A restored narrow gauge steam railway in the Exmoor National Park area of North Devon. One mile of the original 19 miles has so far been re-opened.

Martinhoe Cross, Parracombe, EX31 4RA, Devon, England

Phone: 01598 763487

 **Highly Recommended by Poldark Cottage!**

25. Exmoor National Park

Parks Gardens and Woodlands, Horse Riding and Pony Trekking, Shooting and Fishing, Walking and Climbing



Beautiful national park spanning Somerset and Devon

Dulverton, TA22 9HL, Somerset, England

 **Highly Recommended by Poldark Cottage!**

26. Dunster Castle

Historic Buildings and Monuments, Parks Gardens and Woodlands



National Trust Property with subtropical terraced garden

Dunster, TA24 6SL, Somerset, England

 **Highly Recommended by Poldark Cottage!**

27. The Cross Keys Restaurant in Kippen

Pubs and Bars, Restaurants



Traditional and comfortable inn situated in the village of Kippen, Stirlingshire. We serve food all day from soups to sirloins, with home made pies and puddings to finish. Every Sunday is roast day featuring two types of roast. Children Welcome.

Kippen, FK8 3DN, Stirlingshire, Scotland

Phone: 01786 870293

 **Highly Recommended by Poldark Cottage!**

28. Gloagburn Farm Shop and Coffee Shop near Perth

Cafes Coffee Shops and Tearooms, Shops



The Gloagburn Farm Shop and Café are a local business of high quality offering local produce as well as a café.

Tibbermore, PH1 1QL, Perth and Kinross, Scotland

👍 Highly Recommended by Poldark Cottage!

29. The Black Watch Museum

Visitor Centres and Museums



Regimental Museum of the Proud and Illustrious Black Watch Regiment in Perth Scotland

Perth, PH1 5HR, Perth and Kinross, Scotland

👍 Highly Recommended by Poldark Cottage!

30. Scone Palace

Historic Buildings and Monuments, Parks Gardens and Woodlands



Scone Palace occupies a unique position in Scottish History

Perth, PH2 6BD, Perth and Kinross, Scotland

👍 Highly Recommended by Poldark Cottage!

31. Scone Palace

Historic Buildings and Monuments, Parks Gardens and Woodlands



Former crowning place of the Kings of Scotland, stunning setting in beautiful grounds. A stately home to visit.

Perth, PH2 6BD, Perth and Kinross, Scotland

👍 Highly Recommended by Poldark Cottage!

32. The Scottish Crannog Centre

Historic Buildings and Monuments, Visitor Centres and Museums



Archaeological Open-Air Museum

Kenmore Aberfeldy, PH15 2HY, Perth and Kinross, Scotland

👍 Highly Recommended by Poldark Cottage!

33. Glamis Castle

Historic Buildings and Monuments



Childhood home of Her Majesty Queen Elisabeth The Queen Mother

Glamis, DD8 1RJ, Angus and Dundee, Scotland

 Highly Recommended by Poldark Cottage!

34. Chateau de Hautefort

Historic Buildings and Monuments, Parks Gardens and Woodlands



Magnificent 17c Castle perched on a hill in a beautiful area of France.

Hautefort, 24390, Dordogne, France

"This chateau is off the hook."

 Highly Recommended by Poldark Cottage!

35. Enchanted Forest in Perthshire

Festivals and Events, Lochs Lakes and Waterfalls, Parks Gardens and Woodlands, Live Music and Comedy



The Enchanted Forest offers visitors a unique opportunity to experience the outdoors, at night and with spectacular imagery. You will experience a lighting show that is out of this world.

Pitlochry, PH16 5LA, Perth and Kinross, Scotland

 Highly Recommended by Poldark Cottage!

36. Blair Castle

Historic Buildings and Monuments, Parks Gardens and Woodlands, Cafes Coffee Shops and Tearooms



Historic Castle

Blair Atholl, PH18 5TL, Perth and Kinross, Scotland

 Highly Recommended by Poldark Cottage!

37. Balmoral Castle

Historic Buildings and Monuments, Parks Gardens and Woodlands, Visitor Centres and Museums



5 Star visitor attraction set amongst the magnificent scenery of Royal Deeside

Balmoral, AB35 5TB, Aberdeenshire, Scotland

 Highly Recommended by Poldark Cottage!

38. Loch Venachar

Lochs Lakes and Waterfalls



Loch Venachar, The Trossachs

Callander, FK8 3EN, Stirlingshire,
Scotland

"There is a great walk down the southside of the Loch leading past the sailing club and if you branch right you can reach the Byre Inn."

By Poldark Cottage

39. Charlestown Shipwreck & Heritage Centre

Visitor Centres and Museums



Varying exhibitions displaying artifacts from shipwrecks, local village life and the clay industry

St Austell, PL25 3NJ, Cornwall, England

40. Pinetum Park and Gardens

Parks Gardens and Woodlands



Park and Gardens in Cornwall

St Austell, PL25 3RQ, Cornwall, England

41. The Eden Project in Cornwall

Lochs Lakes and Waterfalls, Parks Gardens and Woodlands, Tours and Trips, Visitor Centres and Museums, Childrens Attractions, Zoos Farms and Wildlife Parks, Cafes Coffee Shops and Tearooms



World Famous visitor attraction in Cornwall - the living theatre of plants and people. Located near St Austell in Cornwall

St Austell, PL24 2SG, Cornwall, England

42. Plume of Feathers Restaurant

Restaurants



Fine destination pub/restuarant

Mitchell, TR8 5AX, Cornwall, England

43. Plume of Feathers Pub

Pubs and Bars



Allways a great atmosphere in this pub, very traditional with good food and good beer.

Truro, TR2 5HF, Cornwall, England

44. Cornwall's Crealy Great Adventure Park

Childrens Attractions, Indoor and Outdoor Play Areas, Theme Parks, Zoos Farms and Wildlife Parks



Set within magical countryside, twist and turn on the pink knuckle coaster, splash down thunder falls and discover unlimited indoor play!

Wadebridge, PL27 7RA, Cornwall, England

45. JC Tours 'Mid-Cornwall Coach Hire'

Tours and Trips, Guided Tours and Day Trips



JC Tours is a leading coach and minibus company based in Mid-Cornwall specialising in all types of group travel.

Newquay, TR7 2NF, Cornwall, England

46. Camel Trail in Cornwall

Parks Gardens and Woodlands, Walking and Climbing



17 mile long trail reaching from St Breward to Padstow

Bodmin , PL30 4NZ, Cornwall, England

47. Blue Wings Surf School in Newquay

Sailing and Watersports

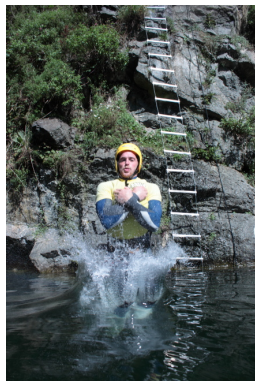


Bluewings Surf School in Newquay, Cornwall is a surfing family for all the family.

Newquay, TR7 1LZ, Cornwall, England

48. Adrenalin Quarry in Cornwall

Karting, Sailing and Watersports



Britain's largest Zip Wire and Giant swing, Fresh water Coasteering +
the UK's only BLOB!

Liskeard, PL14 3PJ, Cornwall, England



More Information

For more information, you can find us under ref.nr. 84736 on LovetoEscape.com

LovetoEscape.com/holiday-cottages/84736/poldark-cottage.htm