

## Killead Lodge Guest House



### Contact Details:

Evening Phone: +44(0)28 94459896

Mobile Phone: 07860715284

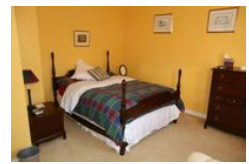
Belfast International Airport

County Antrim

BT29 4EL

Ireland

£ 27.00 - £ 48.00 per night



**Killead Lodge is a modern 3\* Guest House located less than two miles from Belfast International Airport. Most parts of the province can be reached by car within one and a half hours. Belfast is only 25 minutes.**

### Facilities:

- **Catering:**  
Breakfast, Evening Meals
- **Communications:**  
Broadband Internet, Wifi
- **Entertainment:**  
Book Library, CD \ Music, DVD Player, TV, Video, Video/DVD Library
- **Indoor Facilities:**  
Drying Facilities, Guest Lounge, Laundry Facilities
- **Outside Area:**  
Outside Seating, Patio \ Outside Dining Area, Private Parking
- **Room Features:**  
Hair-dryer, Iron/Ironing Board, Radio, Tea And Coffee Making Facilities, TV in bedroom, Video / DVD
- **Special:**  
Cots Available
- **Suitable For:**  
Families, Romantic getaways, Short Breaks

### Room Details:

- 2 En-Suite Double Rooms**
- 1 En-Suite Family Room**
- 1 Triple Room**
- 1 En-Suite Twin Room**

### Features and Memberships:

★★★

### **About Belfast International Airport and County Antrim**

Killead Lodge is in a rural setting close to Belfast International Airport yet only 25 minutes from Belfast city centre. Most parts of Northern Ireland can be reached in less than 90 minutes.

Nearest Bus Stop: 1.5miles

Nearest Train Station: 4 miles

Nearest Motorway: 4 miles

Nearest Airport: Belfast International, 1.5miles

Nearest Ferry: 16 miles

## Recommended Attractions

### 1. Belfast Botanic Gardens

*Parks Gardens and Woodlands, Visitor Centres and Museums*

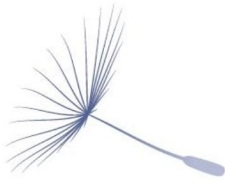


Splendid gardens in Belfast City, including Palm House

Belfast, BT7 1JP, County Antrim, Ireland

### 2. Address House

*Historic Buildings and Monuments, Parks Gardens and Woodlands, Tours and Trips*

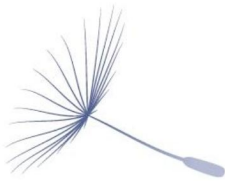


17th-century house with elegant 18th-century decoration

Annaghmore, BT62 1SQ, County Armagh, Ireland

### 3. Giant's Causeway

*Beaches, Tours and Trips, Distilleries Breweries Vineyards, Visitor Centres and Museums, Cafes Coffee Shops and Tearooms, Cycling and Mountain Bikes, Walking and Climbing*

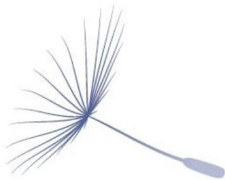


Famous geological World Heritage Site on the North Antrim Coast

Bushmills, BT57 8SU, County Antrim, Ireland

### 4. Mussenden Temple and Downhill Demesne

*Historic Buildings and Monuments, Parks Gardens and Woodlands, Walking and Climbing*

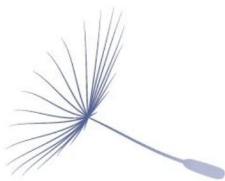


Landscaped demesne and historic monuments in a dramatic coastal setting

Castlerock, BT51 4RP, County Londonderry, Ireland

### 5. Castle Coole

*Historic Buildings and Monuments, Parks Gardens and Woodlands, Visitor Centres and Museums, Cafes Coffee Shops and Tearooms*

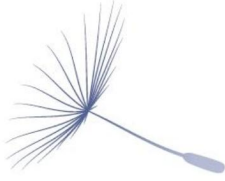


Magnificent 18th-century mansion and landscape park

Enniskillen, BT74 6JY, County Fermanagh, Ireland

## 6. Enniskillen Castle and Museums

*Historic Buildings and Monuments, Visitor Centres and Museums*



This historic site houses two museums, Fermanagh County Museum and The Inniskillings Museum.

Enniskillen, BT74 7HL, County Fermanagh, Ireland



### More Information

For more information, you can find us under ref.nr. 44070 on LovetoEscape.com

[LovetoEscape.com/guest-houses-bnbs/44070/killead-lodge-guest-house.htm](https://LovetoEscape.com/guest-houses-bnbs/44070/killead-lodge-guest-house.htm)