

## Bar Harbour Self Catering Cottage Beadnell Northumbria >

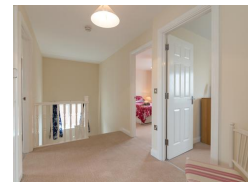


### Contact Details:

Daytime Phone: 01244 356890

Beadnell  
Northumberland  
NE67 5EG  
England

**£ 521.00 - £ 2,519.00 per week**



Set in the centre of the village on a quiet estate, the property offers comfortable, well-equipped accommodation for eight people, sleeping across four bedrooms – three doubles, one of which has an ensuite shower room, and one twin.

### Facilities:

- **Bathroom:**  
Bath, Ensuite Bathrooms
- **Entertainment:**  
CD \ Music, DVD Player, TV
- **Heat:**  
Central Heating
- **Kitchen:**  
Dishwasher, Fridge/Freezer, Microwave, Oven
- **Laundry:**  
Washing Machine
- **Outside Area:**  
Enclosed Garden, Outside Seating, Patio \ Outside Dining Area
- **Price Included:**  
Electricity and Fuel, Linen, Towels
- **Rooms:**  
Dining Room, Kitchen, Living Room
- **Special:**  
Cots Available, Highchairs Available
- **Standard:**  
Luxury

### Room Details:

**Sleeps: 8**

**3 Double Rooms**

**1 Twin Room**

**2 Bathrooms**

- **Suitable For:**

Families, Large Groups, Romantic getaways, Short Breaks

### About Beadnell and Northumberland

Situated beside one of the most beautiful stretches of Northumberland's Heritage Coastline, this attractive and peaceful harbour village is a well-placed spot for anyone looking to enjoy a traditional seaside holiday. Once an important Saxon fishing village and later a haven for smugglers, Beadnell is somewhat more tranquil these days and is popular amongst holiday makers for its sandy beaches, village shop and pubs, which serve food. With another renowned village nearby – Seahouses – the range of local amenities increases to include a supermarket and various restaurants as well as boat trips from the harbour to the magnificent Farne Islands. These small outcrops are famed amongst bird watchers for their wealth of species. However, if you're looking for a more urban environment Bamburgh is close by, as is the market town of Alnwick.

## Recommended Attractions

### 1. Farne Islands Boat Trips

*Tours and Trips, Boat Trips, Guided Tours and Day Trips*



Boat Trips to see seals, birds

Seahouses, NE68 7XW ,  
Northumberland, England

### 2. Cragside House and Gardens

*Historic Buildings and Monuments, Parks Gardens and Woodlands, Visitor Centres and Museums, Cafes Coffee Shops and Tearooms*



Former home of Lord Armstrong. The first house in the world to be lit by electricity.

Morpeth, NE65 7PX, Northumberland, England

### 3. Chesters Roman Fort & Museum

*Historic Buildings and Monuments, Visitor Centres and Museums*



Remains of a fort built to guard the Roman bridge over the River Tyne

Northumberland, NE46 4EU,  
Northumberland, England

### 4. Kielder Water and Forest Park

*Art Gallery, Beaches, Historic Buildings and Monuments, Lochs Lakes and Waterfalls, Parks Gardens and Woodlands, Tours and Trips, Visitor Centres and Museums, Childrens Attractions, Indoor and Outdoor Play Areas, Zoos Farms and Wildlife Parks, Bistros and Brasseries, Cafes Coffee Shops and Tearooms, Cycling and Mountain Bikes, Horse Riding and Pony Trekking, Sailing and Watersports, Shooting and Fishing, Walking and Climbing, Boat Trips, Guided Walks, Bike Hire*



Named as the most tranquil place in England

Northumberland, NE48 1BX,  
Northumberland, England

### 5. Hadrians Wall & Housesteads Fort

*Historic Buildings and Monuments, Parks Gardens and Woodlands, Visitor Centres and Museums, Childrens Attractions, Cafes Coffee Shops and Tearooms, Cycling and Mountain Bikes, Horse Riding and Pony Trekking, Walking and Climbing*



Roman wall snaking across dramatic countryside

Hexham, NE47 6NN, Northumberland,  
England



### More Information

For more information, you can find us under ref.nr. 73910 on LovetoEscape.com

[LovetoEscape.com/holiday-cottages/73910/bar-harbour-self-catering-cottage-beadnell-northumbria-.htm](https://LovetoEscape.com/holiday-cottages/73910/bar-harbour-self-catering-cottage-beadnell-northumbria-.htm)