

Abbots Wood Self Catering Accommodation Netley Abbey South of England >

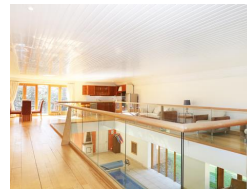
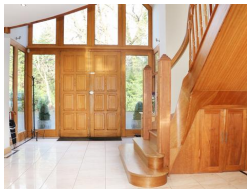


Contact Details:

Daytime Phone: 01244 356890

Netley Abbey
Hampshire
SO31 5HB
England

£ 2,325.00 - £ 10,024.00 per week



This impressive, detached holiday home is situated in Netley Abbey near Southampton, sleeps twelve people in five bedrooms, one super king-size double, one king-size double, two doubles and a family room with two double beds.

Facilities:

- **Bathroom:**
Bath, Ensuite Bathrooms, Power Shower
- **Communications:**
Broadband Internet
- **Disabled:**
Ground Floor Bathroom, Ground Floor WC
- **Entertainment:**
Board Games, Book Library, DVD Player, Satellite, TV
- **Exercise:**
Jacuzzi / Hot Tub
- **Kitchen:**
Cooker, Dishwasher, Fridge/Freezer, Microwave, Oven
- **Laundry:**
Washing Machine
- **Outside Area:**
Enclosed Garden, Outside Seating, Patio \ Outside Dining Area, Swimming Pool
- **Price Included:**
Electricity and Fuel, Linen, Towels

Room Details:

Sleeps: 12

5 Double Rooms

1 Family Room

5 Bathrooms

- **Rooms:**

Dining Room, Kitchen, Living Room

- **Standard:**

Luxury

- **Suitable For:**

Families, Large Groups, Romantic getaways

About Netley Abbey and Hampshire

This diverse, south Hampshire village is located on the eastern shores of Southampton Water, beside the Royal Victoria Country Park. The village takes its name from the 13th century Cistercian monastery there, its ruins still remaining today.

Recommended Attractions

1. Exbury Gardens & Steam Railway Hampshire

Art Gallery, Festivals and Events, Parks Gardens and Woodlands, Photography Courses, Tours and Trips, Childrens Attractions, Cafes Coffee Shops and Tearooms, Restaurants, Live Entertainment, Live Music and Comedy, Theatres, Shops, Walking and Climbing, Guided Walks, Guided Tours and Day Trips, Railways



Exbury Gardens showcases 200 acres of natural beauty and horticultural variety. Offering peace, tranquility & relaxation, a day spent at Exbury is a day spent in paradise. Let the train take the strain on a journey into the Summer Lane Garden.

Southampton, SO45 1AZ, Hampshire, England

Phone: 02380 891 203

2. Burley Villa School Of Riding

Horse Riding and Pony Trekking



Burley Villa School Of Riding has the best opportunities for horse riding whether you are a beginner or not.

New Milton, BH25 5SH, Hampshire, England

3. Barton on Sea Golf Course

Golf



Barton on Sea Golf Course is a glorious area situated between Highcliffe and Milford-on-Sea, consisting of 27 holes spread over 3 loop courses.

New Milton Barton on Sea, BH25 5PP, Hampshire, England

4. Ventnor Botanic Gardens

Festivals and Events, Lochs Lakes and Waterfalls, Nature Reserve, Parks Gardens and Woodlands, Tours and Trips, Visitor Centres and Museums, Indoor and Outdoor Play Areas, Cafes Coffee Shops and Tearooms, Shops

Beautiful botanic gardens with cafe and shop.

Ventnor, PO38 1UL, Isle of Wight, England

5. Stonehenge

Historic Buildings and Monuments



World famous world heritage site in Wiltshire.

Amesbury, SP3 4RG, Wiltshire, England

6. Longleat Safari Park and House

Historic Buildings and Monuments, Zoos Farms and Wildlife Parks



World Famous Stately Home and Safari Park in Wiltshire

Warminster, BA12 7NW, Wiltshire,
England



More Information

For more information, you can find us under ref.nr. 74046 on LovetoEscape.com

LovetoEscape.com/holiday-cottages/74046/abbots-wood-self-catering-accommodation-netley-abbey-south-of-england-.htm