

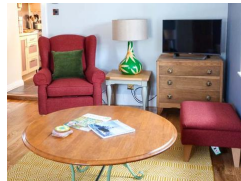
Grace Cottage

**Contact Details:**

Daytime Phone: 01244 356890

Portknockie
Moray Region
AB56 4LN
Scotland

£ 381.00 - £ 1,846.00 per week



This detached cottage in Portknockie sleeps six people in three bedrooms. With lots of space and oozing comfort and style, it is ideal for a family or group of friends who will simply love the close proximity to the sea and the fabulous scenery.

Facilities:

- **COVID-19:**
Advance booking essential, Capacity limit, COVID-19 measures in place, COVID-19 refund and cancellation policy in place, COVID-19 risk assessment completed, Deep cleaning between visitors
- **Bathroom:**
Bath
- **Communications:**
Broadband Internet, Wifi
- **Disabled:**
Ground Floor Bedroom
- **Entertainment:**
Board Games, Book Library, Freeview, TV
- **Kitchen:**
Cooker, Dishwasher, Fridge, Fridge/Freezer, Microwave, Oven
- **Laundry:**
Washing Machine
- **Outside Area:**
Enclosed Garden, Outside Seating, Patio \ Outside Dining Area

Room Details:

Sleeps: 6

2 Double Rooms

1 Twin Room

1 Bathroom

- **Price Included:**
Electricity and Fuel, Fuel For Fires, Linen, Towels
- **Rooms:**
Dining Room, Kitchen, Living Room
- **Standard:**
Very Good
- **Suitable For:**
Families, Romantic getaways, Short Breaks

About Portknockie and Moray Region

The coastal village of Portknockie is situated on a cliff-top overlooking a natural harbour on the Moray Firth coast. Explore the cliff-tops, beaches and coves, or look out for dolphins, seals and sea birds.

Recommended Attractions

1. Balmoral Castle

Historic Buildings and Monuments, Parks Gardens and Woodlands, Visitor Centres and Museums



5 Star visitor attraction set amongst the magnificent scenery of Royal Deeside

Balmoral, AB35 5TB, Aberdeenshire, Scotland

 **Highly Recommended by Grace Cottage!**

2. Aden Country Park Mintlaw Aberdeenshire

Festivals and Events, Lochs Lakes and Waterfalls, Nature Reserve, Parks Gardens and Woodlands, Tours and Trips, Visitor Centres and Museums, Childrens Attractions, Indoor and Outdoor Play Areas, Zoos Farms and Wildlife Parks, Cafes Coffee Shops and Tearooms, Restaurants, Shops, Horse Riding and Pony Trekking, Walking and Climbing

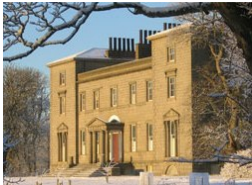


Aden Country Park in Mintlaw, Aberdeenshire, is a 230 acre country park in the heart of Buchan.

Peterhead, AB42 5FQ, Aberdeenshire, Scotland

3. Cairness House

Historic Buildings and Monuments, Parks Gardens and Woodlands



Country House

Fraserburgh, AB43 8XP, Aberdeenshire, Scotland

4. Bead Crazy Aberdeen

Art Gallery, Childrens Attractions, Shops



Bead Crazy is a fun, city centre located specialist retailer of beads and jewellery making supplies. We also run parties and workshops for all ages.

Aberdeen, AB25 1BQ, Aberdeenshire, Scotland

5. Cairngorms National Park

Parks Gardens and Woodlands, Tours and Trips, Visitor Centres and Museums, Childrens Attractions, Cafes Coffee Shops and Tearooms, Restaurants, Walking and Climbing, Winter Sports



Spectacular Mountain range, including ski resort in the Highlands of Scotland

Aviemore, PH22 1RB, The Highlands, Scotland



More Information

For more information, you can find us under ref.nr. 74446 on LovetoEscape.com

LovetoEscape.com/holiday-cottages/74446/grace-cottage.htm