

The Clamshell

**Contact Details:**

Daytime Phone: 01244 356890

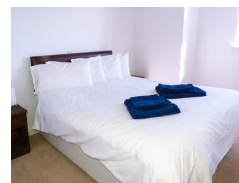
Isle of Whithorn

Dumfries and Galloway

DG8 8LL

Scotland

£ 252.00 - £ 1,065.00 per week



This delightful first floor apartment in the working fishing village of Isle of Whithorn sleeps two people. Ideal for a couple that fancy a relaxing break in a traditional yet modern looking coastal cottage.

Facilities:

- **COVID-19:**
Advance booking essential, Capacity limit, COVID-19 measures in place, COVID-19 refund and cancellation policy in place, COVID-19 risk assessment completed, Deep cleaning between visitors, Pets welcome during COVID-19 restrictions
- **Bathroom:**
Bath
- **Disabled:**
Ground Floor Bathroom, Ground Floor Bedroom, Ground Floor WC
- **Entertainment:**
Board Games, Book Library, DVD Player, Freeview, Satellite, TV
- **Kitchen:**
Cooker, Fridge, Microwave, Oven
- **Laundry:**
Washing Machine
- **Price Included:**
Electricity and Fuel, Linen, Towels
- **Rooms:**
Dining Room, Kitchen, Living Room
- **Standard:**

Room Details:

Sleeps: 2

1 Double Room

1 Bathroom

Very Good

- **Suitable For:**

Elderly, Romantic getaways, Short Breaks

About Isle of Whithorn and Dumfries and Galloway

Although it is no longer an island, the village of Isle of Whithorn still retains the name as a link to its historic past. The village lies by the harbour on the southern tip of the Machars Peninsula.

Recommended Attractions

1. Cream o Galloway Visitor Centre

Visitor Centres and Museums, Indoor and Outdoor Play Areas



Award winning visitor centre - something for everyone, Ice Cream factory, Nature Trails, extensive childrens play area, Tea Room.

Castle Douglas, DG7 2DR, Dumfries and Galloway, Scotland

2. 7Stanes Mountain Bike Trails Kirroughtree and Glentworth

Cycling and Mountain Bikes



In the Forest Parks of Kirroughtree and Glentworth

Kirroughtree, DG8 7BE, Dumfries and Galloway, Scotland

3. Castle Kennedy Gardens

Historic Buildings and Monuments, Parks Gardens and Woodlands



75 acres & 2 Lochs provide a breathtaking backdrop to stunning gardens

Castle Kennedy Stranraer, DG8, Dumfries and Galloway, Scotland

4. Caerlaverock Castle

Historic Buildings and Monuments



Medieval Castle

Dumfries, DG1 4RU, Dumfries and Galloway, Scotland

5. Andy Goldsworthy's Striding Arches

Art Gallery, Parks Gardens and Woodlands



Escape to rolling hills and breathtaking views at this world class site, home to international artist Andy Goldsworthy's massive sandstone arches.

nr Moniaive, Dumfries, Dumfries and Galloway, Scotland



More Information

For more information, you can find us under ref.nr. 79411 on LovetoEscape.com

LovetoEscape.com/holiday-cottages/79411/the-clamshell.htm