

## Granary Cottage

IMAGE COMING  
SOON

**Contact Details:**

Daytime Phone: 01244 356890

Scurlage

Swansea

SA3 1BA

Wales

£ 329.00 - £ 1,150.00 per week

This ground floor annex is in the village of Scurlage near to Swansea and can sleep two people in one bedroom.

**Facilities:**

- **Communications:**  
Broadband Internet
- **Entertainment:**  
TV
- **Kitchen:**  
Cooker, Fridge
- **Laundry:**  
Washing Machine
- **Price Included:**  
Linen, Towels

**Room Details:**

**Sleeps: 2**

**1 Double Room**

**2 Bathrooms**

## Recommended Attractions

### 1. Goodwood

*Art Gallery, Historic Buildings and Monuments, Nature Reserve, Parks Gardens and Woodlands, Tours and Trips, Visitor Centres and Museums, Childrens Attractions, Zoos Farms and Wildlife Parks, Bistros and Brasseries, Cafes Coffee Shops and Tearooms, Horse Riding and Pony Trekking, Shooting and Fishing, Walking and Climbing*



Motor circuit, Stately Home, Racecourse, Aerodrome, Forestry, Organic Farm Shop, Festival of Speed, Goodwood Revival

Chichester, PO18 0PX, West Sussex, England

### 2. Goodwood Races

*Festivals and Events, Horse Racing*



Under the family of the Duke of Richmond, Goodwood Races sits only five miles north of the town of Chichester.

Chichester, PO18 0PS, West Sussex, England

### 3. Arundel Castle and Gardens

*Historic Buildings and Monuments, Parks Gardens and Woodlands*



This converted Castle and Stately Home is over 1000 years old, and sits on the bank of the River Arun in West Sussex

Arundel, BN18 9AB, West Sussex, England

### 4. Chichester Cathedral

*Historic Buildings and Monuments, Tours and Trips*



This 900 Year Old Cathedral has been visited millions of times by people of all faiths and denominations.

Chichester, PO19 1PX, West Sussex, England

### 5. Petworth House

*Historic Buildings and Monuments, Parks Gardens and Woodlands*



Petworth House is a grade 1 listed building from the 17th Century. Set in an idyllic 700-acre Deer Park, it makes a great day out for viewing the historic building and walking in the verdant park surrounding it.

Petworth, GU28 0AE, West Sussex, England

## 6. Bucklers Hard

Visitor Centres and Museums, Childrens Attractions



Bucklers Hard is a 18th century maritime village which is situated on the Beaulieu River, it has a stunning Marina and plenty to see in the village.

Brockenhurst, SO42 7XB, Hampshire, England

## 7. Beaulieu Estate

Historic Buildings and Monuments, Visitor Centres and Museums, Childrens Attractions



Beaulieu is situated in the New Forest National Park, it is the perfect place for a fun day including museums, the historic abbey and the list goes on

Brockenhurst, SO42 7ZN, Hampshire, England

## 8. Paultons Park

Theme Parks



Paultons Family Theme Park is a great day out, there are a wide selection of rides allowing you to have the most fun and exciting day out.

The New Forest, SO51 6AL, Hampshire, England

## 9. h2outdoor Adventure Activities North Devon

Tours and Trips, Cycling and Mountain Bikes, Horse Riding and Pony Trekking, Sailing and Watersports, Walking and Climbing, Guided Walks, Guided Tours and Day Trips



A fantastic selection of adventure activities in North Devon. Sea kayaking, canoeing, surfing, coasteering, mountain biking, pony trekking & high ropes are just some of the activities we offer. Suitable for children, groups, stag/hen & corporate

Woolacombe, EX34 7BZ, Devon, England

 Highly Recommended by Granary Cottage!

## 10. Lynton and Barnstaple Railway

Tours and Trips, Cafes Coffee Shops and Tearooms, Railways



A restored narrow gauge steam railway in the Exmoor National Park area of North Devon. One mile of the original 19 miles has so far been re-opened.

Martinhoe Cross, Parracombe, EX31 4RA, Devon, England

**Phone:** 01598 763487

 Highly Recommended by Granary Cottage!

## 11. Horse riding holidays in North Devon Croyde

Childrens Attractions, Horse Riding and Pony Trekking



Roylands riding stables cater for all abilities and offer horse riding holidays.

Croyde, EX33, Devon, England

 Highly Recommended by Granary Cottage!

---

## 12. Saunton Sands Beach

*Beaches, Childrens Attractions, Sailing and Watersports*



3 miles long sandy beach, ideal for families and popular with surfers

Saunton, EX33, Devon, England

 Highly Recommended by Granary Cottage!

---

## 13. Lundy Island

*Beaches, Tours and Trips, Childrens Attractions, Pubs and Bars, Walking and Climbing*



Lundy Island and Nature Reserve

Bideford, EX39 2LY, Devon, England

 Highly Recommended by Granary Cottage!

---

## 14. Westward Ho! Beach

*Beaches, Childrens Attractions*



Over 2 miles of sandy beach in North Devon

Westward Ho, TQ1 , Devon, England

 Highly Recommended by Granary Cottage!

---

## 15. Quince Honey Farm

*Visitor Centres and Museums, Childrens Attractions, Zoos Farms and Wildlife Parks, Shops*



World famous honey farm - the largest in the country

South Molton, EX36 3AZ, Devon, England

 Highly Recommended by Granary Cottage!

---

## 16. The Milky Way Adventure Park

Visitor Centres and Museums, Childrens Attractions, Indoor and Outdoor Play Areas

North Devon's largest undercover family attraction.

Bideford, EX39 5RY, Devon, England



 **Highly Recommended by Granary Cottage!**

## 17. Dunster Castle

Historic Buildings and Monuments, Parks Gardens and Woodlands

National Trust Property with subtropical terraced garden

Dunster, TA24 6SL, Somerset, England



 **Highly Recommended by Granary Cottage!**

## 18. Exmoor National Park

Parks Gardens and Woodlands, Horse Riding and Pony Trekking, Shooting and Fishing, Walking and Climbing



Beautiful national park spanning Somerset and Devon

Dulverton, TA22 9HL, Somerset, England

 **Highly Recommended by Granary Cottage!**

## 19. Tintagel and Tintagel Castle

Beaches, Historic Buildings and Monuments, Lochs Lakes and Waterfalls, Parks Gardens and Woodlands, Visitor Centres and Museums, Childrens Attractions, Cafes Coffee Shops and Tearooms, Pubs and Bars, Shops



Breathtaking ruined castle on the Cornish Coast - mythical home of King Arthur

Tintagel, PL34, Cornwall, England

 **Highly Recommended by Granary Cottage!**

## 20. Lanhydrock

Historic Buildings and Monuments, Parks Gardens and Woodlands, Visitor Centres and Museums, Childrens Attractions, Indoor and Outdoor Play Areas, Cafes Coffee Shops and Tearooms, Restaurants



Magnificent late Victorian country house with extensive servants' quarters, gardens and wooded estate

Bodmin, PL30 5AD, Cornwall, England

 Highly Recommended by Granary Cottage!

---

## 21. Babbacombe Model Village

*Childrens Attractions*



Thousands of miniature buildings, people and vehicles capture the essence of England's past, present and future

Babbacombe, TQ1 3LA, Devon, England

 Highly Recommended by Granary Cottage!

---

## 22. Fistral Beach

*Beaches, Sailing and Watersports*



World Famous surfing Beach in Newquay, Cornwall

Newquay, Cornwall, Cornwall, England

 Highly Recommended by Granary Cottage!

---

## 23. Newquay Zoo

*Zoos Farms and Wildlife Parks*



One of the nations's best zoos, home of many of the world's endangered species.

Newquay, TR7 2LZ, Cornwall, England

 Highly Recommended by Granary Cottage!

---

## 24. Blackpool Sands Beach Devon

*Beaches, Childrens Attractions, Cafes Coffee Shops and Tearooms, Shops, Sailing and Watersports*



Award-winning family beach with turquoise blue sea giving it an almost Mediterranean feel.

Dartmouth, TQ6 0RG, Devon, England

 Highly Recommended by Granary Cottage!

---

**25. Slapton Sands and Torcross***Beaches, Childrens Attractions, Sailing and Watersports*

Fantastic pebble beach in Devon

Slapton, TQ6, Devon, England



 **Highly Recommended by Granary Cottage!**

**26. Lost Gardens of Heligan***Parks Gardens and Woodlands*

One of the most popular botanical gardens in the UK

St Austell, PL26 6EN, Cornwall, England



*"A great day out for everyone. Highly recommended by us as a family. Plenty of space for kids to run around. Beautiful gardens and walks."*

 **Highly Recommended by Granary Cottage!**

**27. The Cross Keys Restaurant in Kippen***Pubs and Bars, Restaurants*

Traditional and comfortable inn situated in the village of Kippen, Stirlingshire. We serve food all day from soups to sirloins, with home made pies and puddings to finish. Every Sunday is roast day featuring two types of roast. Children Welcome.

Kippen, FK8 3DN, Stirlingshire, Scotland

**Phone:** 01786 870293

 **Highly Recommended by Granary Cottage!**

**28. Gloagburn Farm Shop and Coffee Shop near Perth***Cafes Coffee Shops and Tearooms, Shops*

The Gloagburn Farm Shop and Café are a local business of high quality offering local produce as well as a café.

Tibbermore, PH1 1QL, Perth and Kinross, Scotland



 **Highly Recommended by Granary Cottage!**

**29. The Black Watch Museum***Visitor Centres and Museums*



Regimental Museum of the Proud and Illustrious Black Watch Regiment in Perth Scotland

Perth, PH1 5HR, Perth and Kinross, Scotland

Highly Recommended by Granary Cottage!

### 30. Scone Palace

*Historic Buildings and Monuments, Parks Gardens and Woodlands*



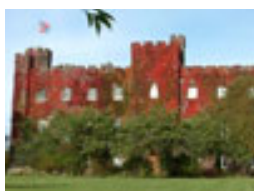
Scone Palace occupies a unique position in Scottish History

Perth, PH2 6BD, Perth and Kinross, Scotland

Highly Recommended by Granary Cottage!

### 31. Scone Palace

*Historic Buildings and Monuments, Parks Gardens and Woodlands*



Former crowning place of the Kings of Scotland, stunning setting in beautiful grounds. A stately home to visit.

Perth, PH2 6BD, Perth and Kinross, Scotland

Highly Recommended by Granary Cottage!

### 32. The Scottish Crannog Centre

*Historic Buildings and Monuments, Visitor Centres and Museums*



Archaeological Open-Air Museum

Kenmore Aberfeldy, PH15 2HY, Perth and Kinross, Scotland

Highly Recommended by Granary Cottage!

### 33. Glamis Castle

*Historic Buildings and Monuments*



Childhood home of Her Majesty Queen Elisabeth The Queen Mother

Glamis, DD8 1RJ, Angus and Dundee, Scotland

Highly Recommended by Granary Cottage!

### 34. Enchanted Forest in Perthshire

*Festivals and Events, Lochs Lakes and Waterfalls, Parks Gardens and Woodlands, Live Music and Comedy*





The Enchanted Forest offers visitors a unique opportunity to experience the outdoors, at night and with spectacular imagery. You will experience a lighting show that is out of this world.

Pitlochry, PH16 5LA, Perth and Kinross, Scotland

Highly Recommended by Granary Cottage!

### 35. Blair Castle

*Historic Buildings and Monuments, Parks Gardens and Woodlands, Cafes Coffee Shops and Tearooms*



Historic Castle

Blair Atholl, PH18 5TL, Perth and Kinross, Scotland

Highly Recommended by Granary Cottage!

### 36. Balmoral Castle

*Historic Buildings and Monuments, Parks Gardens and Woodlands, Visitor Centres and Museums*



5 Star visitor attraction set amongst the magnificent scenery of Royal Deeside

Balmoral, AB35 5TB, Aberdeenshire, Scotland

Highly Recommended by Granary Cottage!

### 37. Dunrobin Castle Golspie Sutherland

*Historic Buildings and Monuments, Visitor Centres and Museums*



Seat of the Duke of Sutherland. Originally built in 1401 and rebuilt in 1835. Castle Tour and Falconry Displays a Must. Open between April and Oct

Golspie, KW10 6RS, The Highlands, Scotland

*"Castle of fairy tales which looks dramatic from the sea. Falconry display and museum worth visiting too."*

Highly Recommended by Granary Cottage!

### 38. Brora golf club

Golf



Brora Golf Club, a traditional links course, designed by James Braid, where little has changed since he left in 1923.

Brora, KW9 6QS, The Highlands, Scotland

*"Wonderful Braid course in top 100 best courses UK and Ireland."*

Highly Recommended by Granary Cottage!

### 39. Chateau de Hautefort

*Historic Buildings and Monuments, Parks Gardens and Woodlands*



Magnificent 17c Castle perched on a hill in a beautiful area of France.

Hautefort, 24390, Dordogne, France

*"This chateau is off the hook."*

 **Highly Recommended by Granary Cottage!**

### 40. Loch Venachar

*Lochs Lakes and Waterfalls*



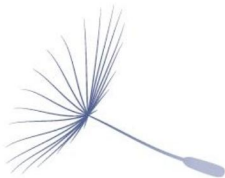
Loch Venachar, The Trossachs

Callander, FK8 3EN, Stirlingshire, Scotland

*"There is a great walk down the southside of the Loch leading past the sailing club and if you branch right you can reach the Byre Inn."*  
By Granary Cottage

### 41. Rhossili Worm's Head & Visitor Centre Gower

*Beaches, Visitor Centres and Museums*



Visitor Centre in area of spectacular countryside and coast with lovely beaches

Rhossili, SA3 1PR, Swansea, Wales

### 42. Gower Heritage Centre

*Visitor Centres and Museums*



12th Century Water Mill with old farm machinery & tea rooms and childrens play area

Gower, SA3 2AH, Swansea, Wales

### 43. Oriel Myrddin Gallery

*Art Gallery*



oriel myrddin gallery

Contemporary regional art and craft gallery

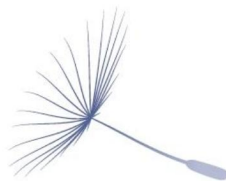
Carmarthen, SA31 1LH,  
Carmarthenshire, Wales

#### 44. Aberdulais Falls

*Historic Buildings and Monuments, Lochs Lakes and Waterfalls, Visitor Centres and Museums, Cafes Coffee Shops and Tearooms*

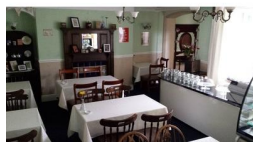
Famous waterfalls and fascinating industrial site

Aberdulais, SA10 8EU, Neath Port Talbot, Wales



#### 45. Saint Teresas Restaurant and Tea Room in Tenby West Wales

*Beaches, Festivals and Events, Visitor Centres and Museums, Cafes Coffee Shops and Tearooms, Restaurants*



We pride ourselves on Freshly made food, locally sourced and prepared daily. Our friendly staff will help you with your drinks and serve you with a smile and cheer.

Tenby, SA70 7DL, Pembrokeshire, Wales

**Phone:** 01834 845514

#### 46. Ocean Commotion

*Childrens Attractions, Indoor and Outdoor Play Areas*



An indoor childrens playcentre set out over 5 levels. Open 7 days a week all year round.

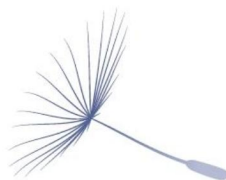
Tenby, SA70 7HU, Pembrokeshire, Wales

#### 47. Dinefwr Park and Castle

*Historic Buildings and Monuments, Parks Gardens and Woodlands*

18th-century landscape park, enclosing a medieval deer park

Llandeilo, SA19 6RT, Carmarthenshire, Wales



#### More Information

For more information, you can find us under ref.nr. 81511 on LovetoEscape.com

[LovetoEscape.com/holiday-cottages/81511/granary-cottage.htm](https://LovetoEscape.com/holiday-cottages/81511/granary-cottage.htm)