

Ettrick Cottage

**Contact Details:**

Daytime Phone: 01244 356890

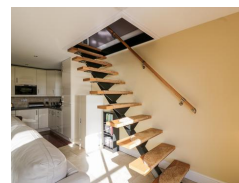
Rothesay isle of bute

Argyll and Bute

PA20 0QX

Scotland

£ 554.00 - £ 1,590.00 per week



This detached cottage rests on the Isle of Bute and can sleep two people in one bedroom.

Facilities:

- **COVID-19:**
Advance booking essential, Capacity limit, COVID-19 measures in place, COVID-19 refund and cancellation policy in place, COVID-19 risk assessment completed, Deep cleaning between visitors
- **Communications:**
Broadband Internet
- **Entertainment:**
TV
- **Kitchen:**
Cooker, Fridge
- **Laundry:**
Washing Machine
- **Price Included:**
Linen, Towels

Room Details:

Sleeps: 2

1 Bedroom

1 Bathroom

About Rothesay isle of bute and Argyll and Bute

Rothesay is a seaside town resting on the beautiful Isle of Bute in Scotland. A popular tourist destination since the Victorian era with its easy ferry access to Bute, the town stands to offer its guest a variety of wonderful amenities and attractions.

Recommended Attractions

1. Goodwood

Art Gallery, Historic Buildings and Monuments, Nature Reserve, Parks Gardens and Woodlands, Tours and Trips, Visitor Centres and Museums, Childrens Attractions, Zoos Farms and Wildlife Parks, Bistros and Brasseries, Cafes Coffee Shops and Tearooms, Horse Riding and Pony Trekking, Shooting and Fishing, Walking and Climbing



Motor circuit, Stately Home, Racecourse, Aerodrome, Forestry, Organic Farm Shop, Festival of Speed, Goodwood Revival

Chichester, PO18 0PX, West Sussex, England

2. Goodwood Races

Festivals and Events, Horse Racing



Under the family of the Duke of Richmond, Goodwood Races sits only five miles north of the town of Chichester.

Chichester, PO18 0PS, West Sussex, England

3. Arundel Castle and Gardens

Historic Buildings and Monuments, Parks Gardens and Woodlands



This converted Castle and Stately Home is over 1000 years old, and sits on the bank of the River Arun in West Sussex

Arundel, BN18 9AB, West Sussex, England

4. Chichester Cathedral

Historic Buildings and Monuments, Tours and Trips



This 900 Year Old Cathedral has been visited millions of times by people of all faiths and denominations.

Chichester, PO19 1PX, West Sussex, England

5. Petworth House

Historic Buildings and Monuments, Parks Gardens and Woodlands



Petworth House is a grade 1 listed building from the 17th Century. Set in an idyllic 700-acre Deer Park, it makes a great day out for viewing the historic building and walking in the verdant park surrounding it.

Petworth, GU28 0AE, West Sussex, England

6. Bucklers Hard

Visitor Centres and Museums, Childrens Attractions



Bucklers Hard is a 18th century maritime village which is situated on the Beaulieu River, it has a stunning Marina and plenty to see in the village.

Brockenhurst, SO42 7XB, Hampshire, England

7. Beaulieu Estate

Historic Buildings and Monuments, Visitor Centres and Museums, Childrens Attractions



Beaulieu is situated in the New Forest National Park, it is the perfect place for a fun day including museums, the historic abbey and the list goes on

Brockenhurst, SO42 7ZN, Hampshire, England

8. Paultons Park

Theme Parks



Paultons Family Theme Park is a great day out, there are a wide selection of rides allowing you to have the most fun and exciting day out.

The New Forest, SO51 6AL, Hampshire, England

9. The Cross Keys Restaurant in Kippen

Pubs and Bars, Restaurants



Traditional and comfortable inn situated in the village of Kippen, Stirlingshire. We serve food all day from soups to sirloins, with home made pies and puddings to finish. Every Sunday is roast day featuring two types of roast. Children Welcome.

Kippen, FK8 3DN, Stirlingshire, Scotland

Phone: 01786 870293

Highly Recommended by Ettrick Cottage!

10. The Scottish Crannog Centre

Historic Buildings and Monuments, Visitor Centres and Museums



Archaeological Open-Air Museum

Kenmore Aberfeldy, PH15 2HY, Perth and Kinross, Scotland

Highly Recommended by Ettrick Cottage!

11. Gloagburn Farm Shop and Coffee Shop near Perth

Cafes Coffee Shops and Tearooms, Shops



The Gloagburn Farm Shop and Café are a local business of high quality offering local produce as well as a café.

Tibbermore, PH1 1QL, Perth and Kinross, Scotland

Highly Recommended by Ettrick Cottage!

12. The Black Watch Museum

Visitor Centres and Museums



Regimental Museum of the Proud and Illustrious Black Watch Regiment in Perth Scotland

Perth, PH1 5HR, Perth and Kinross, Scotland

Highly Recommended by Ettrick Cottage!

13. Scone Palace

Historic Buildings and Monuments, Parks Gardens and Woodlands



Scone Palace occupies a unique position in Scottish History

Perth, PH2 6BD, Perth and Kinross, Scotland

Highly Recommended by Ettrick Cottage!

14. Scone Palace

Historic Buildings and Monuments, Parks Gardens and Woodlands



Former crowning place of the Kings of Scotland, stunning setting in beautiful grounds. A stately home to visit.

Perth, PH2 6BD, Perth and Kinross, Scotland

Highly Recommended by Ettrick Cottage!

15. Enchanted Forest in Perthshire

Festivals and Events, Lochs Lakes and Waterfalls, Parks Gardens and Woodlands, Live Music and Comedy



The Enchanted Forest offers visitors a unique opportunity to experience the outdoors, at night and with spectacular imagery. You will experience a lighting show that is out of this world.

Pitlochry, PH16 5LA, Perth and Kinross, Scotland

Highly Recommended by Ettrick Cottage!

16. Blair Castle

Historic Buildings and Monuments, Parks Gardens and Woodlands, Cafes Coffee Shops and Tearooms



Historic Castle

Blair Atholl, PH18 5TL, Perth and
Kinross, Scotland

 **Highly Recommended by Ettrick Cottage!**

17. Glamis Castle

Historic Buildings and Monuments



Childhood home of Her Majesty Queen Elisabeth The Queen Mother

Glamis, DD8 1RJ, Angus and Dundee,
Scotland

 **Highly Recommended by Ettrick Cottage!**

18. Balmoral Castle

Historic Buildings and Monuments, Parks Gardens and Woodlands, Visitor Centres and Museums



5 Star visitor attraction set amongst the magnificent scenery of Royal
Deeside

Balmoral, AB35 5TB, Aberdeenshire,
Scotland

 **Highly Recommended by Ettrick Cottage!**

19. Dunrobin Castle Golspie Sutherland

Historic Buildings and Monuments, Visitor Centres and Museums



Seat of the Duke of Sutherland. Originally built in 1401 and rebuilt in
1835. Castle Tour and Falconry Displays a Must. Open between April
and Oct

Golspie, KW10 6RS, The Highlands,
Scotland

"Castle of fairy tales which looks dramatic from the sea. Falconry display and museum worth visiting too."

 **Highly Recommended by Ettrick Cottage!**

20. Brora golf club

Golf



Brora Golf Club, a traditional links course, designed by James Braid,
where little has changed since he left in 1923.

Brora, KW9 6QS, The Highlands,
Scotland

"Wonderful Braid course in top 100 best courses UK and Ireland."

 **Highly Recommended by Ettrick Cottage!**

21. Lundy Island

Beaches, Tours and Trips, Childrens Attractions, Pubs and Bars, Walking and Climbing



Lundy Island and Nature Reserve

Bideford, EX39 2LY, Devon, England

 **Highly Recommended by Ettrick Cottage!**

22. Lynton and Barnstaple Railway

Tours and Trips, Cafes Coffee Shops and Tearooms, Railways



A restored narrow gauge steam railway in the Exmoor National Park area of North Devon. One mile of the original 19 miles has so far been re-opened.

Martinhoe Cross, Parracombe, EX31 4RA, Devon, England

Phone: 01598 763487

 **Highly Recommended by Ettrick Cottage!**

23. h2outdoor Adventure Activities North Devon

Tours and Trips, Cycling and Mountain Bikes, Horse Riding and Pony Trekking, Sailing and Watersports, Walking and Climbing, Guided Walks, Guided Tours and Day Trips



A fantastic selection of adventure activities in North Devon. Sea kayaking, canoeing, surfing, coasteering, mountain biking, pony trekking & high ropes are just some of the activities we offer. Suitable for children, groups, stag/hen & corporate

Woolacombe, EX34 7BZ, Devon, England

 **Highly Recommended by Ettrick Cottage!**

24. Horse riding holidays in North Devon Croyde

Childrens Attractions, Horse Riding and Pony Trekking



Roylands riding stables cater for all abilities and offer horse riding holidays.

Croyde, EX33, Devon, England

 **Highly Recommended by Ettrick Cottage!**

25. Dunster Castle

Historic Buildings and Monuments, Parks Gardens and Woodlands



National Trust Property with subtropical terraced garden

Dunster, TA24 6SL, Somerset, England

 Highly Recommended by Ettrick Cottage!

26. Saunton Sands Beach

Beaches, Childrens Attractions, Sailing and Watersports



3 miles long sandy beach, ideal for families and popular with surfers

Saunton, EX33, Devon, England

 Highly Recommended by Ettrick Cottage!

27. Westward Ho! Beach

Beaches, Childrens Attractions



Over 2 miles of sandy beach in North Devon

Westward Ho, TQ1 , Devon, England

 Highly Recommended by Ettrick Cottage!

28. Quince Honey Farm

Visitor Centres and Museums, Childrens Attractions, Zoos Farms and Wildlife Parks, Shops



World famous honey farm - the largest in the country

South Molton, EX36 3AZ, Devon, England

 Highly Recommended by Ettrick Cottage!

29. The Milky Way Adventure Park

Visitor Centres and Museums, Childrens Attractions, Indoor and Outdoor Play Areas



North Devon's largest undercover family attraction.

Bideford, EX39 5RY, Devon, England

 Highly Recommended by Ettrick Cottage!

30. Exmoor National Park

Parks Gardens and Woodlands, Horse Riding and Pony Trekking, Shooting and Fishing, Walking and Climbing



Beautiful national park spanning Somerset and Devon

Dulverton, TA22 9HL, Somerset, England

 Highly Recommended by Ettrick Cottage!

31. Tintagel and Tintagel Castle

Beaches, Historic Buildings and Monuments, Lochs Lakes and Waterfalls, Parks Gardens and Woodlands, Visitor Centres and Museums, Childrens Attractions, Cafes Coffee Shops and Tearooms, Pubs and Bars, Shops



Breathtaking ruined castle on the Cornish Coast - mythical home of King Arthur

Tintagel, PL34, Cornwall, England

 Highly Recommended by Ettrick Cottage!

32. Lanhydrock

Historic Buildings and Monuments, Parks Gardens and Woodlands, Visitor Centres and Museums, Childrens Attractions, Indoor and Outdoor Play Areas, Cafes Coffee Shops and Tearooms, Restaurants



Magnificent late Victorian country house with extensive servants' quarters, gardens and wooded estate

Bodmin, PL30 5AD, Cornwall, England

 Highly Recommended by Ettrick Cottage!

33. Fistral Beach

Beaches, Sailing and Watersports



World Famous surfing Beach in Newquay, Cornwall

Newquay, Cornwall, Cornwall, England

 Highly Recommended by Ettrick Cottage!

34. Newquay Zoo

Zoos Farms and Wildlife Parks



One of the nations's best zoos, home of many of the world's endangered species.

Newquay, TR7 2LZ, Cornwall, England

 Highly Recommended by Ettrick Cottage!

35. Babbacombe Model Village

Childrens Attractions



Thousands of miniature buildings, people and vehicles capture the essence of England's past, present and future

Babbacombe, TQ1 3LA, Devon, England

 **Highly Recommended by Ettrick Cottage!**

36. Lost Gardens of Heligan

Parks Gardens and Woodlands



One of the most popular botanical gardens in the UK

St Austell, PL26 6EN, Cornwall, England

"A great day out for everyone. Highly recommended by us as a family. Plenty of space for kids to run around. Beautiful gardens and walks."

 **Highly Recommended by Ettrick Cottage!**

37. Blackpool Sands Beach Devon

Beaches, Childrens Attractions, Cafes Coffee Shops and Tearooms, Shops, Sailing and Watersports



Award-winning family beach with turquoise blue sea giving it an almost Mediterranean feel.

Dartmouth, TQ6 0RG, Devon, England

 **Highly Recommended by Ettrick Cottage!**

38. Slapton Sands and Torcross

Beaches, Childrens Attractions, Sailing and Watersports



Fantastic pebble beach in Devon

Slapton, TQ6, Devon, England

 **Highly Recommended by Ettrick Cottage!**

39. Loch Venachar

Lochs Lakes and Waterfalls



Loch Venachar, The Trossachs

Callander, FK8 3EN, Stirlingshire,
Scotland

"There is a great walk down the southside of the Loch leading past the sailing club and if you branch right you can reach the Byre Inn."

By Ettrick Cottage

40. Port Bannatyne Golf Club Isle of Bute

Golf



An eccentric but wonderful 13 hole course with magnificent views.

Port Bannatyne Isle of Bute, PA20 0PH,
Argyll and Bute, Scotland

41. The Famous Russian Tavern

Pubs and Bars, Restaurants



A recreation of a Tsarist Russian Tavern on the seashore at Port Bannatyne, Isle of Bute.

Port Bannatyne Isle of Bute, PA20 ,
Argyll and Bute, Scotland

42. Rothesay Castle

Historic Buildings and Monuments



A 9th century Viking Castle in the heart of Rothesay, Isle of Bute

Rothesay Isle of Bute, PA20, Argyll and
Bute, Scotland

43. Loch Fad Fisheries

Shooting and Fishing



Angling for Rainbow and Brown Trout, Perch, and Pike on Loch Fad and Loch Quien on the Isle of Bute.

ISLE OF BUTE, PA20 9PA, Argyll and
Bute, Scotland

44. Ascog Hall

Parks Gardens and Woodlands



Victorian Fernery and Enchanting Garden

Ascog, PA20 9EU, Argyll and Bute, Scotland

45. Mount Stuart House Isle of Bute

Historic Buildings and Monuments

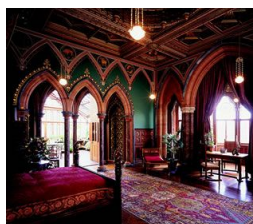


Magnificent Gothic Stately Home on the Isle of Bute, open to the public, set in 300 acres of park with plants from all over the world.

Isle of Bute, PA20 9LR, Argyll and Bute, Scotland

46. Mount Stuart

Historic Buildings and Monuments



Britain's most astounding Victorian gothic mansion. Home to the Stuarts of Bute.

Isle of Bute, PA20 9LR, Argyll and Bute, Scotland

47. Kingarth Trekking Centre

Childrens Attractions, Horse Riding and Pony Trekking



Riding Tuition and Treks Out

Kilchattan Bay, PA20 9NJ, Argyll and Bute, Scotland

48. St Blanes Chapel 6th Century and Dunagoil Vitrified Iron Age Village

Historic Buildings and Monuments



At the south tip of the Isle of Bute is a 6th Century chapel closeby a prehistoric fortified village.

Dunagoil Southern Tip of Isle of Bute, PA20, Argyll and Bute, Scotland



More Information

For more information, you can find us under ref.nr. 82497 on LovetoEscape.com

LovetoEscape.com/holiday-cottages/82497/ettrick-cottage.htm