

Swanage Town Apartment

**Contact Details:**

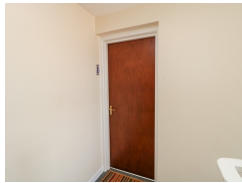
Daytime Phone: 01244 356890

Swanage

Dorset

BH19 1DN

England

£ 373.00 - £ 1,141.00 per week

This second-floor apartment rests in Swanage, Dorset and can sleep four people in two bedrooms.

Facilities:

- **Communications:**
Broadband Internet
- **Entertainment:**
TV
- **Kitchen:**
Cooker, Dishwasher, Fridge
- **Laundry:**
Washing Machine
- **Price Included:**
Linen, Towels

Room Details:**Sleeps: 4****1 Double Room****2 Single Rooms****1 Twin Room****1 Bathroom****About Swanage and Dorset**

Swanage is a small seaside town which rests on Dorset's famous Jurassic coast, set right on the edge of the Isle of Purbeck. Offering a good choice of shops, pubs and local attractions, this southern spot is perfect for a break on the coast, especially thanks to the beautiful golden sandy beach that it's home to. Spend your days on the stunning beach, stroll along the classic Victorian pier, enjoy a spot of fishing, or head out and try to dolphin spotting.

Recommended Attractions

1. Goodwood

Art Gallery, Historic Buildings and Monuments, Nature Reserve, Parks Gardens and Woodlands, Tours and Trips, Visitor Centres and Museums, Childrens Attractions, Zoos Farms and Wildlife Parks, Bistros and Brasseries, Cafes Coffee Shops and Tearooms, Horse Riding and Pony Trekking, Shooting and Fishing, Walking and Climbing



Motor circuit, Stately Home, Racecourse, Aerodrome, Forestry, Organic Farm Shop, Festival of Speed, Goodwood Revival

Chichester, PO18 0PX, West Sussex, England

2. Goodwood Races

Festivals and Events, Horse Racing



Under the family of the Duke of Richmond, Goodwood Races sits only five miles north of the town of Chichester.

Chichester, PO18 0PS, West Sussex, England

3. Arundel Castle and Gardens

Historic Buildings and Monuments, Parks Gardens and Woodlands



This converted Castle and Stately Home is over 1000 years old, and sits on the bank of the River Arun in West Sussex

Arundel, BN18 9AB, West Sussex, England

4. Chichester Cathedral

Historic Buildings and Monuments, Tours and Trips



This 900 Year Old Cathedral has been visited millions of times by people of all faiths and denominations.

Chichester, PO19 1PX, West Sussex, England

5. Petworth House

Historic Buildings and Monuments, Parks Gardens and Woodlands



Petworth House is a grade 1 listed building from the 17th Century. Set in an idyllic 700-acre Deer Park, it makes a great day out for viewing the historic building and walking in the verdant park surrounding it.

Petworth, GU28 0AE, West Sussex, England

6. Bucklers Hard

Visitor Centres and Museums, Childrens Attractions



Bucklers Hard is a 18th century maritime village which is situated on the Beaulieu River, it has a stunning Marina and plenty to see in the village.

Brockenhurst, SO42 7XB, Hampshire, England

7. Beaulieu Estate

Historic Buildings and Monuments, Visitor Centres and Museums, Childrens Attractions



Beaulieu is situated in the New Forest National Park, it is the perfect place for a fun day including museums, the historic abbey and the list goes on

Brockenhurst, SO42 7ZN, Hampshire, England

8. Paultons Park

Theme Parks



Paultons Family Theme Park is a great day out, there are a wide selection of rides allowing you to have the most fun and exciting day out.

The New Forest, SO51 6AL, Hampshire, England

9. Babbacombe Model Village

Childrens Attractions



Thousands of miniature buildings, people and vehicles capture the essence of England's past, present and future

Babbacombe, TQ1 3LA, Devon, England

 **Highly Recommended by Swanage Town Apartment!**

10. Blackpool Sands Beach Devon

Beaches, Childrens Attractions, Cafes Coffee Shops and Tearooms, Shops, Sailing and Watersports



Award-winning family beach with turquoise blue sea giving it an almost Mediterranean feel.

Dartmouth, TQ6 0RG, Devon, England

 **Highly Recommended by Swanage Town Apartment!**

11. Exmoor National Park*Parks Gardens and Woodlands, Horse Riding and Pony Trekking, Shooting and Fishing, Walking and Climbing*

Beautiful national park spanning Somerset and Devon

Dulverton, TA22 9HL, Somerset, England

 **Highly Recommended by Swanage Town Apartment!**
12. Dunster Castle*Historic Buildings and Monuments, Parks Gardens and Woodlands*

National Trust Property with subtropical terraced garden

Dunster, TA24 6SL, Somerset, England

 **Highly Recommended by Swanage Town Apartment!**
13. Slapton Sands and Torcross*Beaches, Childrens Attractions, Sailing and Watersports*

Fantastic pebble beach in Devon

Slapton, TQ6, Devon, England

 **Highly Recommended by Swanage Town Apartment!**
14. Quince Honey Farm*Visitor Centres and Museums, Childrens Attractions, Zoos Farms and Wildlife Parks, Shops*

World famous honey farm - the largest in the country

South Molton, EX36 3AZ, Devon, England

 **Highly Recommended by Swanage Town Apartment!**
15. Lynton and Barnstaple Railway*Tours and Trips, Cafes Coffee Shops and Tearooms, Railways*

A restored narrow gauge steam railway in the Exmoor National Park area of North Devon. One mile of the original 19 miles has so far been re-opened.

Martinhoe Cross, Parracombe, EX31 4RA, Devon, England

Phone: 01598 763487

 **Highly Recommended by Swanage Town Apartment!**

16. Saunton Sands Beach

Beaches, Childrens Attractions, Sailing and Watersports



3 miles long sandy beach, ideal for families and popular with surfers

Saunton, EX33, Devon, England

 **Highly Recommended by Swanage Town Apartment!**

17. Westward Ho! Beach

Beaches, Childrens Attractions



Over 2 miles of sandy beach in North Devon

Westward Ho, TQ1 , Devon, England

 **Highly Recommended by Swanage Town Apartment!**

18. h2outdoor Adventure Activities North Devon

Tours and Trips, Cycling and Mountain Bikes, Horse Riding and Pony Trekking, Sailing and Watersports, Walking and Climbing, Guided Walks, Guided Tours and Day Trips



A fantastic selection of adventure activities in North Devon. Sea kayaking, canoeing, surfing, coasteering, mountain biking, pony trekking & high ropes are just some of the activities we offer. Suitable for children, groups, stag/hen & corporate

Woolacombe, EX34 7BZ, Devon, England

 **Highly Recommended by Swanage Town Apartment!**

19. Horse riding holidays in North Devon Croyde

Childrens Attractions, Horse Riding and Pony Trekking



Roylands riding stables cater for all abilities and offer horse riding holidays.

Croyde, EX33, Devon, England

 **Highly Recommended by Swanage Town Apartment!**

20. The Milky Way Adventure Park

Visitor Centres and Museums, Childrens Attractions, Indoor and Outdoor Play Areas



North Devon's largest undercover family attraction.

Bideford, EX39 5RY, Devon, England

 **Highly Recommended by Swanage Town Apartment!**

21. Lanhydrock

Historic Buildings and Monuments, Parks Gardens and Woodlands, Visitor Centres and Museums, Childrens Attractions, Indoor and Outdoor Play Areas, Cafes Coffee Shops and Tearooms, Restaurants



Magnificent late Victorian country house with extensive servants' quarters, gardens and wooded estate

Bodmin, PL30 5AD, Cornwall, England

 **Highly Recommended by Swanage Town Apartment!**

22. Tintagel and Tintagel Castle

Beaches, Historic Buildings and Monuments, Lochs Lakes and Waterfalls, Parks Gardens and Woodlands, Visitor Centres and Museums, Childrens Attractions, Cafes Coffee Shops and Tearooms, Pubs and Bars, Shops



Breathtaking ruined castle on the Cornish Coast - mythical home of King Arthur

Tintagel, PL34, Cornwall, England

 **Highly Recommended by Swanage Town Apartment!**

23. Lundy Island

Beaches, Tours and Trips, Childrens Attractions, Pubs and Bars, Walking and Climbing



Lundy Island and Nature Reserve

Bideford, EX39 2LY, Devon, England

 **Highly Recommended by Swanage Town Apartment!**

24. Lost Gardens of Heligan

Parks Gardens and Woodlands



One of the most popular botanical gardens in the UK

St Austell, PL26 6EN, Cornwall, England

"A great day out for everyone. Highly recommended by us as a family. Plenty of space for kids to run around. Beautiful gardens and walks."

 **Highly Recommended by Swanage Town Apartment!**

25. Newquay Zoo

Zoos Farms and Wildlife Parks



One of the nations's best zoos, home of many of the world's endangered species.

Newquay, TR7 2LZ, Cornwall, England

 **Highly Recommended by Swanage Town Apartment!**

26. Fistral Beach

Beaches, Sailing and Watersports



World Famous surfing Beach in Newquay, Cornwall

Newquay, Cornwall, Cornwall, England

 **Highly Recommended by Swanage Town Apartment!**

27. The Cross Keys Restaurant in Kippen

Pubs and Bars, Restaurants



Traditional and comfortable inn situated in the village of Kippen, Stirlingshire. We serve food all day from soups to sirloins, with home made pies and puddings to finish. Every Sunday is roast day featuring two types of roast. Children Welcome.

Kippen, FK8 3DN, Stirlingshire, Scotland

Phone: 01786 870293

 **Highly Recommended by Swanage Town Apartment!**

28. Chateau de Hautefort

Historic Buildings and Monuments, Parks Gardens and Woodlands



Magnificent 17c Castle perched on a hill in a beautiful area of France.

Hautefort, 24390, Dordogne, France

"This chateau is off the hook."

Highly Recommended by Swanage Town Apartment!

29. The Black Watch Museum

Visitor Centres and Museums



Regimental Museum of the Proud and Illustrious Black Watch Regiment in Perth Scotland

Perth, PH1 5HR, Perth and Kinross, Scotland

Highly Recommended by Swanage Town Apartment!

30. Gloagburn Farm Shop and Coffee Shop near Perth

Cafes Coffee Shops and Tearooms, Shops



The Gloagburn Farm Shop and Café are a local business of high quality offering local produce as well as a café.

Tibbermore, PH1 1QL, Perth and Kinross, Scotland

Highly Recommended by Swanage Town Apartment!

31. Scone Palace

Historic Buildings and Monuments, Parks Gardens and Woodlands



Scone Palace occupies a unique position in Scottish History

Perth, PH2 6BD, Perth and Kinross, Scotland

Highly Recommended by Swanage Town Apartment!

32. Scone Palace

Historic Buildings and Monuments, Parks Gardens and Woodlands



Former crowning place of the Kings of Scotland, stunning setting in beautiful grounds. A stately home to visit.

Perth, PH2 6BD, Perth and Kinross, Scotland

Highly Recommended by Swanage Town Apartment!

33. Glamis Castle

Historic Buildings and Monuments



Childhood home of Her Majesty Queen Elisabeth The Queen Mother

Glamis, DD8 1RJ, Angus and Dundee, Scotland

 **Highly Recommended by Swanage Town Apartment!**

34. The Scottish Crannog Centre

Historic Buildings and Monuments, Visitor Centres and Museums



Archaeological Open-Air Museum

Kenmore Aberfeldy, PH15 2HY, Perth and Kinross, Scotland

 **Highly Recommended by Swanage Town Apartment!**

35. Enchanted Forest in Perthshire

Festivals and Events, Lochs Lakes and Waterfalls, Parks Gardens and Woodlands, Live Music and Comedy



The Enchanted Forest offers visitors a unique opportunity to experience the outdoors, at night and with spectacular imagery. You will experience a lighting show that is out of this world.

Pitlochry, PH16 5LA, Perth and Kinross, Scotland

 **Highly Recommended by Swanage Town Apartment!**

36. Blair Castle

Historic Buildings and Monuments, Parks Gardens and Woodlands, Cafes Coffee Shops and Tearooms



Historic Castle

Blair Atholl, PH18 5TL, Perth and Kinross, Scotland

 **Highly Recommended by Swanage Town Apartment!**

37. Balmoral Castle

Historic Buildings and Monuments, Parks Gardens and Woodlands, Visitor Centres and Museums



5 Star visitor attraction set amongst the magnificent scenery of Royal Deeside

Balmoral, AB35 5TB, Aberdeenshire, Scotland

 **Highly Recommended by Swanage Town Apartment!**

38. Loch Venachar

Lochs Lakes and Waterfalls



Loch Venachar, The Trossachs

Callander, FK8 3EN, Stirlingshire, Scotland

"There is a great walk down the southside of the Loch leading past the sailing club and if you branch right you can reach the Byre Inn."
By Swanage Town Apartment

39. Swanage Armed Forces Weekend

Festivals and Events

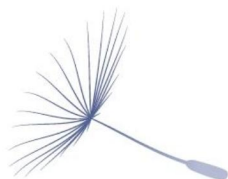


A tribute to Heroes past Present and Future June 19th-20th

Swanage, Bh19, Dorset, England

40. Brownsea Island

Historic Buildings and Monuments, Parks Gardens and Woodlands, Childrens Attractions



Peaceful island of woodland and heath with a wide variety of wildlife, famous for being the birthplace of Scouting and Guiding

Poole, BH13 7EE, Dorset, England

41. Monkey World in Dorset

Nature Reserve, Zoos Farms and Wildlife Parks



Monkey World is set in 65 acres of Dorset woodland and provides sanctuary for over 150 primates.

Wareham, BH20 6HH, Wiltshire, England

42. Bovington Tank Musuem

Visitor Centres and Museums, Childrens Attractions



With almost 300 tanks and fighting vehicles on exhibition from 26 countries it is the second-largest collection of tanks/ armoured fighting vehicles.

Bovington, BH20 6JG, Dorset, England

43. Highcliffe Castle

Historic Buildings and Monuments



Highcliffe Castle is a stunning 19th century building includes galleries and exhibitions as well as a it shop and visitor center.

Highcliffe, BH23 4LE, Dorset, England

44. Snowtrax

Childrens Attractions, Winter Sports



Snowtrax is a fun outdoor activity centre for all the family there are plenty of great things to do such as skiing and snowboarding.

Christchurch, BH23 6AW, Dorset, England

45. Conqueror Inn

Restaurants



Gatropub serving local produce filled food all day

Hinton, BH23 7EF, Dorset, England

46. Challenge Leisure

Childrens Attractions, Shooting and Fishing



Challenge Leisure is a great outdoor sport leisure activity company, it has many great activities to enjoy for the perfect day out.

Ringwood, BH24 2SB, Hampshire, England

47. Barton on Sea Golf Course

Golf

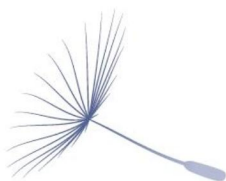


Barton on Sea Golf Couse is a glorious area situated between Highcliffe and Milford-on-Sea, consisting of 27 holes spread over 3 loop courses.

New Milton Barton on Sea, BH25 5PP, Hampshire, England

48. The Needles Old Battery

Historic Buildings and Monuments, Cafes Coffee Shops and Tearooms



Victorian coastal defence perched high above the Needles Rocks

Totland, PO39 0JH, Isle of Wight, England



More Information

For more information, you can find us under ref.nr. 84241 on LovetoEscape.com

LovetoEscape.com/holiday-cottages/84241/swanage-town-apartment.htm