

## Horse Mill Lodge

**Contact Details:**

Daytime Phone: 01244 356890

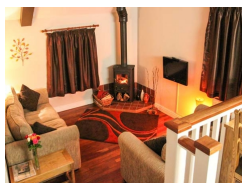
Taddington

Derbyshire

SK17 9TR

England

**£ 276.00 - £ 1,198.00 per week**



This welcoming first floor apartment in Taddington sleeps two people in one bedroom.

**Facilities:**

- **Communications:**  
Broadband Internet
- **Entertainment:**  
TV
- **Heat:**  
Open Fire
- **Kitchen:**  
Cooker, Dishwasher, Fridge
- **Price Included:**  
Linen, Towels

**Room Details:**

**Sleeps: 2**

**1 Double Room**

**1 Bathroom**

**About Taddington and Derbyshire**

Taddington is a tiny Derbyshire village within the National Park, with a pub, and within easy reach of amenities in Buxton and Bakewell, and attractions such as Chatsworth or walking and cycling.

## Recommended Attractions

### 1. Goodwood

*Art Gallery, Historic Buildings and Monuments, Nature Reserve, Parks Gardens and Woodlands, Tours and Trips, Visitor Centres and Museums, Childrens Attractions, Zoos Farms and Wildlife Parks, Bistros and Brasseries, Cafes Coffee Shops and Tearooms, Horse Riding and Pony Trekking, Shooting and Fishing, Walking and Climbing*



Motor circuit, Stately Home, Racecourse, Aerodrome, Forestry, Organic Farm Shop, Festival of Speed, Goodwood Revival

Chichester, PO18 0PX, West Sussex, England

### 2. Goodwood Races

*Festivals and Events, Horse Racing*



Under the family of the Duke of Richmond, Goodwood Races sits only five miles north of the town of Chichester.

Chichester, PO18 0PS, West Sussex, England

### 3. Arundel Castle and Gardens

*Historic Buildings and Monuments, Parks Gardens and Woodlands*



This converted Castle and Stately Home is over 1000 years old, and sits on the bank of the River Arun in West Sussex

Arundel, BN18 9AB, West Sussex, England

### 4. Chichester Cathedral

*Historic Buildings and Monuments, Tours and Trips*



This 900 Year Old Cathedral has been visited millions of times by people of all faiths and denominations.

Chichester, PO19 1PX, West Sussex, England

### 5. Petworth House

*Historic Buildings and Monuments, Parks Gardens and Woodlands*



Petworth House is a grade 1 listed building from the 17th Century. Set in an idyllic 700-acre Deer Park, it makes a great day out for viewing the historic building and walking in the verdant park surrounding it.

Petworth, GU28 0AE, West Sussex, England

## 6. Bucklers Hard

*Visitor Centres and Museums, Childrens Attractions*



Bucklers Hard is a 18th century maritime village which is situated on the Beaulieu River, it has a stunning Marina and plenty to see in the village.

Brockenhurst, SO42 7XB, Hampshire, England

## 7. Beaulieu Estate

*Historic Buildings and Monuments, Visitor Centres and Museums, Childrens Attractions*



Beaulieu is situated in the New Forest National Park, it is the perfect place for a fun day including museums, the historic abbey and the list goes on

Brockenhurst, SO42 7ZN, Hampshire, England

## 8. Paultons Park

*Theme Parks*



Paultons Family Theme Park is a great day out, there are a wide selection of rides allowing you to have the most fun and exciting day out.

The New Forest, SO51 6AL, Hampshire, England

## 9. Dunster Castle

*Historic Buildings and Monuments, Parks Gardens and Woodlands*



National Trust Property with subtropical terraced garden

Dunster, TA24 6SL, Somerset, England

 **Highly Recommended by Horse Mill Lodge!**

## 10. Lynton and Barnstaple Railway

*Tours and Trips, Cafes Coffee Shops and Tearooms, Railways*



A restored narrow gauge steam railway in the Exmoor National Park area of North Devon. One mile of the original 19 miles has so far been re-opened.

Martinhoe Cross, Parracombe, EX31 4RA, Devon, England

**Phone:** 01598 763487

 **Highly Recommended by Horse Mill Lodge!**

## 11. Exmoor National Park

*Parks Gardens and Woodlands, Horse Riding and Pony Trekking, Shooting and Fishing, Walking and Climbing*



Beautiful national park spanning Somerset and Devon

Dulverton, TA22 9HL, Somerset, England

 Highly Recommended by Horse Mill Lodge!

## 12. h2outdoor Adventure Activities North Devon

*Tours and Trips, Cycling and Mountain Bikes, Horse Riding and Pony Trekking, Sailing and Watersports, Walking and Climbing, Guided Walks, Guided Tours and Day Trips*



A fantastic selection of adventure activities in North Devon. Sea kayaking, canoeing, surfing, coasteering, mountain biking, pony trekking & high ropes are just some of the activities we offer. Suitable for children, groups, stag/hen & corporate

Woolacombe, EX34 7BZ, Devon, England

 Highly Recommended by Horse Mill Lodge!

## 13. Quince Honey Farm

*Visitor Centres and Museums, Childrens Attractions, Zoos Farms and Wildlife Parks, Shops*



World famous honey farm - the largest in the country

South Molton, EX36 3AZ, Devon, England

 Highly Recommended by Horse Mill Lodge!

## 14. Horse riding holidays in North Devon Croyde

*Childrens Attractions, Horse Riding and Pony Trekking*



Roylands riding stables cater for all abilities and offer horse riding holidays.

Croyde, EX33, Devon, England

 Highly Recommended by Horse Mill Lodge!

## 15. Saunton Sands Beach

*Beaches, Childrens Attractions, Sailing and Watersports*



3 miles long sandy beach, ideal for families and popular with surfers

Saunton, EX33, Devon, England

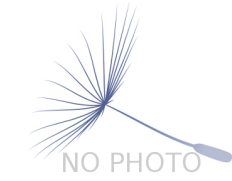
 Highly Recommended by Horse Mill Lodge!

## 16. Westward Ho! Beach

*Beaches, Childrens Attractions*

Over 2 miles of sandy beach in North Devon

Westward Ho, TQ1 , Devon, England



 **Highly Recommended by Horse Mill Lodge!**

## 17. Lundy Island

*Beaches, Tours and Trips, Childrens Attractions, Pubs and Bars, Walking and Climbing*

Lundy Island and Nature Reserve

Bideford, EX39 2LY, Devon, England



 **Highly Recommended by Horse Mill Lodge!**

## 18. The Milky Way Adventure Park

*Visitor Centres and Museums, Childrens Attractions, Indoor and Outdoor Play Areas*

North Devon's largest undercover family attraction.

Bideford, EX39 5RY, Devon, England



 **Highly Recommended by Horse Mill Lodge!**

## 19. Babbacombe Model Village

*Childrens Attractions*

Thousands of miniature buildings, people and vehicles capture the essence of England's past, present and future

Babbacombe, TQ1 3LA, Devon, England



 **Highly Recommended by Horse Mill Lodge!**

## 20. Blackpool Sands Beach Devon

*Beaches, Childrens Attractions, Cafes Coffee Shops and Tearooms, Shops, Sailing and Watersports*



Award-winning family beach with turquoise blue sea giving it an almost Mediterranean feel.

Dartmouth, TQ6 0RG, Devon, England

 Highly Recommended by Horse Mill Lodge!

---

## 21. Tintagel and Tintagel Castle

*Beaches, Historic Buildings and Monuments, Lochs Lakes and Waterfalls, Parks Gardens and Woodlands, Visitor Centres and Museums, Childrens Attractions, Cafes Coffee Shops and Tearooms, Pubs and Bars, Shops*



Breathtaking ruined castle on the Cornish Coast - mythical home of King Arthur

Tintagel, PL34, Cornwall, England

 Highly Recommended by Horse Mill Lodge!

---

## 22. Slapton Sands and Torcross

*Beaches, Childrens Attractions, Sailing and Watersports*

Fantastic pebble beach in Devon

Slapton, TQ6, Devon, England



 Highly Recommended by Horse Mill Lodge!

---

## 23. The Cross Keys Restaurant in Kippen

*Pubs and Bars, Restaurants*



Traditional and comfortable inn situated in the village of Kippen, Stirlingshire. We serve food all day from soups to sirloins, with home made pies and puddings to finish. Every Sunday is roast day featuring two types of roast. Children Welcome.

Kippen, FK8 3DN, Stirlingshire, Scotland

**Phone:** 01786 870293

 Highly Recommended by Horse Mill Lodge!

---

## 24. The Black Watch Museum

*Visitor Centres and Museums*



Regimental Museum of the Proud and Illustrious Black Watch Regiment in Perth Scotland

Perth, PH1 5HR, Perth and Kinross, Scotland

 Highly Recommended by Horse Mill Lodge!

---



## 25. Gloagburn Farm Shop and Coffee Shop near Perth

*Cafes Coffee Shops and Tearooms, Shops*



The Gloagburn Farm Shop and Café are a local business of high quality offering local produce as well as a café.

Tibbermore, PH1 1QL, Perth and Kinross, Scotland

 **Highly Recommended by Horse Mill Lodge!**

## 26. Scone Palace

*Historic Buildings and Monuments, Parks Gardens and Woodlands*



Scone Palace occupies a unique position in Scottish History

Perth, PH2 6BD, Perth and Kinross, Scotland

 **Highly Recommended by Horse Mill Lodge!**

## 27. Scone Palace

*Historic Buildings and Monuments, Parks Gardens and Woodlands*



Former crowning place of the Kings of Scotland, stunning setting in beautiful grounds. A stately home to visit.

Perth, PH2 6BD, Perth and Kinross, Scotland

 **Highly Recommended by Horse Mill Lodge!**

## 28. Lanhydrock

*Historic Buildings and Monuments, Parks Gardens and Woodlands, Visitor Centres and Museums, Childrens Attractions, Indoor and Outdoor Play Areas, Cafes Coffee Shops and Tearooms, Restaurants*



Magnificent late Victorian country house with extensive servants' quarters, gardens and wooded estate

Bodmin, PL30 5AD, Cornwall, England

 **Highly Recommended by Horse Mill Lodge!**

## 29. Glamis Castle

*Historic Buildings and Monuments*



Childhood home of Her Majesty Queen Elisabeth The Queen Mother

Glamis, DD8 1RJ, Angus and Dundee, Scotland

 **Highly Recommended by Horse Mill Lodge!**

### 30. Newquay Zoo

*Zoos Farms and Wildlife Parks*



One of the nations's best zoos, home of many of the world's endangered species.

Newquay, TR7 2LZ, Cornwall, England

 **Highly Recommended by Horse Mill Lodge!**

### 31. Fistral Beach

*Beaches, Sailing and Watersports*



World Famous surfing Beach in Newquay, Cornwall

Newquay, Cornwall, Cornwall, England

 **Highly Recommended by Horse Mill Lodge!**

### 32. Lost Gardens of Heligan

*Parks Gardens and Woodlands*



One of the most popular botanical gardens in the UK

St Austell, PL26 6EN, Cornwall, England

*"A great day out for everyone. Highly recommended by us as a family. Plenty of space for kids to run around. Beautiful gardens and walks."*

 **Highly Recommended by Horse Mill Lodge!**

### 33. The Scottish Crannog Centre

*Historic Buildings and Monuments, Visitor Centres and Museums*



Archaeological Open-Air Museum

Kenmore Aberfeldy, PH15 2HY, Perth and Kinross, Scotland

 **Highly Recommended by Horse Mill Lodge!**



### 34. Enchanted Forest in Perthshire

*Festivals and Events, Lochs Lakes and Waterfalls, Parks Gardens and Woodlands, Live Music and Comedy*



The Enchanted Forest offers visitors a unique opportunity to experience the outdoors, at night and with spectacular imagery. You will experience a lighting show that is out of this world.

Pitlochry, PH16 5LA, Perth and Kinross, Scotland

 **Highly Recommended by Horse Mill Lodge!**

---

### 35. Blair Castle

*Historic Buildings and Monuments, Parks Gardens and Woodlands, Cafes Coffee Shops and Tearooms*



Historic Castle

Blair Atholl, PH18 5TL, Perth and Kinross, Scotland

 **Highly Recommended by Horse Mill Lodge!**

---

### 36. Balmoral Castle

*Historic Buildings and Monuments, Parks Gardens and Woodlands, Visitor Centres and Museums*



5 Star visitor attraction set amongst the magnificent scenery of Royal Deeside

Balmoral, AB35 5TB, Aberdeenshire, Scotland

 **Highly Recommended by Horse Mill Lodge!**

---

### 37. Dunrobin Castle Golspie Sutherland

*Historic Buildings and Monuments, Visitor Centres and Museums*



Seat of the Duke of Sutherland. Originally built in 1401 and rebuilt in 1835. Castle Tour and Falconry Displays a Must. Open between April and Oct

Golspie, KW10 6RS, The Highlands, Scotland

"Castle of fairy tales which looks dramatic from the sea. Falconry display and museum worth visiting too."

 **Highly Recommended by Horse Mill Lodge!**

---

### 38. Brora golf club

*Golf*



Brora Golf Club, a traditional links course, designed by James Braid, where little has changed since he left in 1923.

Brora, KW9 6QS, The Highlands, Scotland

"Wonderful Braid course in top 100 best courses UK and Ireland."

👍 Highly Recommended by Horse Mill Lodge!

---

### 39. Loch Venachar

*Lochs Lakes and Waterfalls*



Loch Venachar, The Trossachs

Callander, FK8 3EN, Stirlingshire,  
Scotland

"There is a great walk down the southside of the Loch leading past the sailing club and if you branch right you can reach the Byre Inn."  
By Horse Mill Lodge

---

### 40. Peak Practice Golf Driving Range

*Golf*



Floodlit golf driving range suitable for all the family whatever the weather

Buxton, SK17 7HW, Derbyshire, England

---

### 42. Hells Hall of Fame Halloween event

*Tours and Trips, Childrens Attractions*



An interactive ghost walk with live performances during the week of Halloween.

Buxton, SK17 6XN, Derbyshire, England

---

### 43. Visit Buxton Opera House

*Live Entertainment, Live Music and Comedy, Theatres*



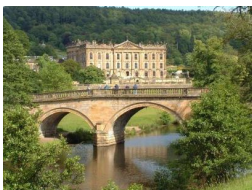
is a charming historic building in the heart of the Peak District, one of Britain's leading receiving theatres.

Buxton, SK17 6XN, Derbyshire, England

---

### 44. Chatsworth House

*Historic Buildings and Monuments, Parks Gardens and Woodlands, Childrens Attractions, Zoos Farms and Wildlife Parks*



Historic stately home

Bakewell, DE45 1PP, Derbyshire,  
England

---

#### 45. World of James Herriot

*Historic Buildings and Monuments, Tours and Trips, Visitor Centres and Museums*



Interactive museum experience featuring all things James Herriot - the famous vet and author of the 'All Creatures Great and Small' books.

Thirsk, YO7 1PL, North Yorkshire, England

#### 46. The Blackpool Tower

*Historic Buildings and Monuments, Visitor Centres and Museums, Childrens Attractions, Indoor and Outdoor Play Areas, Theme Parks, Zoos Farms and Wildlife Parks, Restaurants, Cinemas, Live Entertainment, Live Music and Comedy, Nightlife, Theatres*



The Blackpool Tower is one of the UK's most iconic attractions, including adored venues such as the Eye, the Dungeon, the Circus, Jungle Jim's and more.

Blackpool, FY1 4BJ, Lancashire, England

#### 47. Crich Tramway Village

*Tours and Trips, Visitor Centres and Museums, Childrens Attractions, Indoor and Outdoor Play Areas, Cafes Coffee Shops and Tearooms, Pubs and Bars, Restaurants, Shops, Guided Tours and Day Trips, Railways*



An open air museum of trams. Museum, exhibition hall, workshops, woodland park, indoor and outdoor play & picnic area. Shop, bar, restaurant and tearoom

Matlock, DE4 5DP, Derbyshire, England

#### 48. ALTON TOWERS

*Childrens Attractions, Theme Parks*



A theme park and resort located in Staffordshire, England

Alton , ST10 4DB, Staffordshire, England



#### More Information

For more information, you can find us under ref.nr. 87903 on LovetoEscape.com

[LovetoEscape.com/holiday-cottages/87903/horse-mill-lodge.htm](https://LovetoEscape.com/holiday-cottages/87903/horse-mill-lodge.htm)