

Sailor's Watch

**Contact Details:**

Daytime Phone: 01244 356890

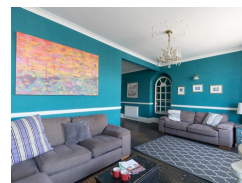
Weymouth

Dorset

DT4 8TJ

England

£ 744.00 - £ 2,291.00 per week



This maisonette apartment is situated within the town of Weymouth and sleeps up to six people in three bedrooms.

Facilities:

- **Communications:**
Broadband Internet
- **Entertainment:**
TV
- **Kitchen:**
Cooker, Dishwasher, Fridge
- **Laundry:**
Washing Machine
- **Outside Area:**
Enclosed Garden
- **Price Included:**
Linen, Towels
- **Special:**
Cots Available

Room Details:

Sleeps: 6

2 Single Rooms

1 Twin Room

2 Bathrooms

About Weymouth and Dorset

Weymouth is a popular resort with a variety of attractions on offer to suit a group of all ages and tastes. Here, you will find glorious sandy beaches for water sports and a bustling harbour. Within the town you will also find a superb selection of pubs, restaurants and shops to explore. Within close reach is the Portland Harbour which is linked by the Chesil Beach.

Recommended Attractions

1. Goodwood

Art Gallery, Historic Buildings and Monuments, Nature Reserve, Parks Gardens and Woodlands, Tours and Trips, Visitor Centres and Museums, Childrens Attractions, Zoos Farms and Wildlife Parks, Bistros and Brasseries, Cafes Coffee Shops and Tearooms, Horse Riding and Pony Trekking, Shooting and Fishing, Walking and Climbing



Motor circuit, Stately Home, Racecourse, Aerodrome, Forestry, Organic Farm Shop, Festival of Speed, Goodwood Revival

Chichester, PO18 0PX, West Sussex, England

2. Goodwood Races

Festivals and Events, Horse Racing



Under the family of the Duke of Richmond, Goodwood Races sits only five miles north of the town of Chichester.

Chichester, PO18 0PS, West Sussex, England

3. Arundel Castle and Gardens

Historic Buildings and Monuments, Parks Gardens and Woodlands



This converted Castle and Stately Home is over 1000 years old, and sits on the bank of the River Arun in West Sussex

Arundel, BN18 9AB, West Sussex, England

4. Chichester Cathedral

Historic Buildings and Monuments, Tours and Trips



This 900 Year Old Cathedral has been visited millions of times by people of all faiths and denominations.

Chichester, PO19 1PX, West Sussex, England

5. Petworth House

Historic Buildings and Monuments, Parks Gardens and Woodlands



Petworth House is a grade 1 listed building from the 17th Century. Set in an idyllic 700-acre Deer Park, it makes a great day out for viewing the historic building and walking in the verdant park surrounding it.

Petworth, GU28 0AE, West Sussex, England

6. Bucklers Hard

Visitor Centres and Museums, Childrens Attractions



Bucklers Hard is a 18th century maritime village which is situated on the Beaulieu River, it has a stunning Marina and plenty to see in the village.

Brockenhurst, SO42 7XB, Hampshire, England

7. Beaulieu Estate

Historic Buildings and Monuments, Visitor Centres and Museums, Childrens Attractions



Beaulieu is situated in the New Forest National Park, it is the perfect place for a fun day including museums, the historic abbey and the list goes on

Brockenhurst, SO42 7ZN, Hampshire, England

8. Paultons Park

Theme Parks



Paultons Family Theme Park is a great day out, there are a wide selection of rides allowing you to have the most fun and exciting day out.

The New Forest, SO51 6AL, Hampshire, England

9. Babbacombe Model Village

Childrens Attractions



Thousands of miniature buildings, people and vehicles capture the essence of England's past, present and future

Babbacombe, TQ1 3LA, Devon, England

 Highly Recommended by Sailor's Watch!

10. Blackpool Sands Beach Devon

Beaches, Childrens Attractions, Cafes Coffee Shops and Tearooms, Shops, Sailing and Watersports



Award-winning family beach with turquoise blue sea giving it an almost Mediterranean feel.

Dartmouth, TQ6 0RG, Devon, England

 Highly Recommended by Sailor's Watch!

11. Exmoor National Park

Parks Gardens and Woodlands, Horse Riding and Pony Trekking, Shooting and Fishing, Walking and Climbing



Beautiful national park spanning Somerset and Devon

Dulverton, TA22 9HL, Somerset, England

 **Highly Recommended by Sailor's Watch!**

12. Slapton Sands and Torcross

Beaches, Childrens Attractions, Sailing and Watersports



Fantastic pebble beach in Devon

Slapton, TQ6, Devon, England

 **Highly Recommended by Sailor's Watch!**

13. Dunster Castle

Historic Buildings and Monuments, Parks Gardens and Woodlands



National Trust Property with subtropical terraced garden

Dunster, TA24 6SL, Somerset, England

 **Highly Recommended by Sailor's Watch!**

14. Quince Honey Farm

Visitor Centres and Museums, Childrens Attractions, Zoos Farms and Wildlife Parks, Shops



World famous honey farm - the largest in the country

South Molton, EX36 3AZ, Devon, England

 **Highly Recommended by Sailor's Watch!**

15. Lynton and Barnstaple Railway

Tours and Trips, Cafes Coffee Shops and Tearooms, Railways



A restored narrow gauge steam railway in the Exmoor National Park area of North Devon. One mile of the original 19 miles has so far been re-opened.

Martinhoe Cross, Parracombe, EX31 4RA, Devon, England

Phone: 01598 763487

 **Highly Recommended by Sailor's Watch!**

16. Westward Ho! Beach

Beaches, Childrens Attractions



Over 2 miles of sandy beach in North Devon

Westward Ho, TQ1 , Devon, England

 **Highly Recommended by Sailor's Watch!**

17. Saunton Sands Beach

Beaches, Childrens Attractions, Sailing and Watersports



3 miles long sandy beach, ideal for families and popular with surfers

Saunton, EX33, Devon, England

 **Highly Recommended by Sailor's Watch!**

18. Horse riding holidays in North Devon Croyde

Childrens Attractions, Horse Riding and Pony Trekking



Roylands riding stables cater for all abilities and offer horse riding holidays.

Croyde, EX33, Devon, England

 **Highly Recommended by Sailor's Watch!**

19. h2outdoor Adventure Activities North Devon

Tours and Trips, Cycling and Mountain Bikes, Horse Riding and Pony Trekking, Sailing and Watersports, Walking and Climbing, Guided Tours and Day Trips, Guided Walks



A fantastic selection of adventure activities in North Devon. Sea kayaking, canoeing, surfing, coasteering, mountain biking, pony trekking & high ropes are just some of the activities we offer. Suitable for children, groups, stag/hen & corporate

Woolacombe, EX34 7BZ, Devon, England

 **Highly Recommended by Sailor's Watch!**

20. The Milky Way Adventure Park

Visitor Centres and Museums, Childrens Attractions, Indoor and Outdoor Play Areas



North Devon's largest undercover family attraction.

Bideford, EX39 5RY, Devon, England

 **Highly Recommended by Sailor's Watch!**

21. Lanhydrock

Historic Buildings and Monuments, Parks Gardens and Woodlands, Visitor Centres and Museums, Childrens Attractions, Indoor and Outdoor Play Areas, Cafes Coffee Shops and Tearooms, Restaurants



Magnificent late Victorian country house with extensive servants' quarters, gardens and wooded estate

Bodmin, PL30 5AD, Cornwall, England

 **Highly Recommended by Sailor's Watch!**

22. Tintagel and Tintagel Castle

Beaches, Historic Buildings and Monuments, Lochs Lakes and Waterfalls, Parks Gardens and Woodlands, Visitor Centres and Museums, Childrens Attractions, Cafes Coffee Shops and Tearooms, Pubs and Bars, Shops



Breathtaking ruined castle on the Cornish Coast - mythical home of King Arthur

Tintagel, PL34, Cornwall, England

 **Highly Recommended by Sailor's Watch!**

23. Lundy Island

Beaches, Tours and Trips, Childrens Attractions, Pubs and Bars, Walking and Climbing



Lundy Island and Nature Reserve

Bideford, EX39 2LY, Devon, England

 **Highly Recommended by Sailor's Watch!**

24. Lost Gardens of Heligan

Parks Gardens and Woodlands



One of the most popular botanical gardens in the UK

St Austell, PL26 6EN, Cornwall, England

"A great day out for everyone. Highly recommended by us as a family. Plenty of space for kids to run around. Beautiful gardens and walks."

Highly Recommended by Sailor's Watch!

25. Newquay Zoo

Zoos Farms and Wildlife Parks



One of the nation's best zoos, home of many of the world's endangered species.

Newquay, TR7 2LZ, Cornwall, England

Highly Recommended by Sailor's Watch!

26. Fistral Beach

Beaches, Sailing and Watersports



World Famous surfing Beach in Newquay, Cornwall

Newquay, Cornwall, Cornwall, England

Highly Recommended by Sailor's Watch!

27. The Cross Keys Restaurant in Kippen

Pubs and Bars, Restaurants



Traditional and comfortable inn situated in the village of Kippen, Stirlingshire. We serve food all day from soups to sirloins, with home made pies and puddings to finish. Every Sunday is roast day featuring two types of roast. Children Welcome.

Kippen, FK8 3DN, Stirlingshire, Scotland

Phone: 01786 870293

Highly Recommended by Sailor's Watch!

28. Gloagburn Farm Shop and Coffee Shop near Perth

Cafes Coffee Shops and Tearooms, Shops



The Gloagburn Farm Shop and Café are a local business of high quality offering local produce as well as a café.

Tibbermore, PH1 1QL, Perth and Kinross, Scotland

Highly Recommended by Sailor's Watch!

29. The Black Watch Museum

Visitor Centres and Museums



Regimental Museum of the Proud and Illustrious Black Watch Regiment in Perth Scotland

Perth, PH1 5HR, Perth and Kinross, Scotland

Highly Recommended by Sailor's Watch!

30. Chateau de Hautefort

Historic Buildings and Monuments, Parks Gardens and Woodlands



Magnificent 17c Castle perched on a hill in a beautiful area of France.

Hautefort, 24390, Dordogne, France

"This chateau is off the hook."

Highly Recommended by Sailor's Watch!

31. Scone Palace

Historic Buildings and Monuments, Parks Gardens and Woodlands



Scone Palace occupies a unique position in Scottish History

Perth, PH2 6BD, Perth and Kinross, Scotland

Highly Recommended by Sailor's Watch!

32. Scone Palace

Historic Buildings and Monuments, Parks Gardens and Woodlands



Former crowning place of the Kings of Scotland, stunning setting in beautiful grounds. A stately home to visit.

Perth, PH2 6BD, Perth and Kinross, Scotland

Highly Recommended by Sailor's Watch!

33. Glamis Castle

Historic Buildings and Monuments



Childhood home of Her Majesty Queen Elisabeth The Queen Mother

Glamis, DD8 1RJ, Angus and Dundee, Scotland

 **Highly Recommended by Sailor's Watch!**

34. The Scottish Crannog Centre

Historic Buildings and Monuments, Visitor Centres and Museums



Archaeological Open-Air Museum

Kenmore Aberfeldy, PH15 2HY, Perth and Kinross, Scotland

 **Highly Recommended by Sailor's Watch!**

35. Enchanted Forest in Perthshire

Festivals and Events, Lochs Lakes and Waterfalls, Parks Gardens and Woodlands, Live Music and Comedy



The Enchanted Forest offers visitors a unique opportunity to experience the outdoors, at night and with spectacular imagery. You will experience a lighting show that is out of this world.

Pitlochry, PH16 5LA, Perth and Kinross, Scotland

 **Highly Recommended by Sailor's Watch!**

36. Blair Castle

Historic Buildings and Monuments, Parks Gardens and Woodlands, Cafes Coffee Shops and Tearooms



Historic Castle

Blair Atholl, PH18 5TL, Perth and Kinross, Scotland

 **Highly Recommended by Sailor's Watch!**

37. Balmoral Castle

Historic Buildings and Monuments, Parks Gardens and Woodlands, Visitor Centres and Museums



5 Star visitor attraction set amongst the magnificent scenery of Royal Deeside

Balmoral, AB35 5TB, Aberdeenshire, Scotland

 **Highly Recommended by Sailor's Watch!**

38. Loch Venachar*Lochs Lakes and Waterfalls*

Loch Venachar, The Trossachs

Callander, FK8 3EN, Stirlingshire,
Scotland*"There is a great walk down the southside of the Loch leading past the sailing club and if you branch right you can reach the Byre Inn."*

By Sailor's Watch

39. The Ghost Walk Of Old Weymouth*Tours and Trips, Childrens Attractions, Guided Tours and Day Trips*

Discover the haunted hot spots and the dark hidden history of old Weymouth

Weymouth, DT4 8TR, Dorset, England

40. Maiden Castle Iron Age Hill Fort Dorset*Historic Buildings and Monuments*

The largest and most complex Iron Age hill fort in Britain.

Dorchester, DT1 2QQ, Dorset, England

41. Kingston Maurward Gardens and Animal Park*Nature Reserve, Parks Gardens and Woodlands, Tours and Trips, Visitor Centres and Museums, Childrens Attractions, Zoos Farms and Wildlife Parks, Shops*

A tranquil, peaceful and intimate spot, the gardens are beautifully situated in undulating Dorset countryside, with a lake, canals, broad sweeping and formal gardens. Animal Park with rare breeds

Dorchester , DT2 8PY, Dorset, England

42. Abbotsbury Sub Tropical Gardens Swannery and Children's Farm Dorset*Parks Gardens and Woodlands, Tours and Trips, Visitor Centres and Museums, Childrens Attractions, Zoos Farms and Wildlife Parks, Cafes Coffee Shops and Tearooms, Restaurants, Shops*

Magnificent Victorian walled garden set in 20 acres of woodland valley with unique micro climate. Swannery and Children's Farm

Abbotsbury Nr Weymouth, DT3 4LA,
Dorset, England

43. Athelhampton House and Gardens Dorset

Historic Buildings and Monuments, Parks Gardens and Woodlands, Tours and Trips, Visitor Centres and Museums, Pubs and Bars, Restaurants, Cinemas, Theatres, Shops



Athelhampton House, located outside Dorchester in Dorset. Tour the house and gardens. Topiary Restaurant, Long Hall Restaurant, Gift shop, Cinema & Outdoor Theatre. Wedding & Conference Venue

Athelhampton, DT2 7LG, Dorset, England

44. Bovington Tank Musuem

Visitor Centres and Museums, Childrens Attractions



With almost 300 tanks and fighting vehicles on exhibition from 26 countries it is the second-largest collection of tanks/ armoured fighting vehicles.

Bovington, BH20 6JG, Dorset, England

45. Monkey World in Dorset

Nature Reserve, Zoos Farms and Wildlife Parks



Monkey World is set in 65 acres of Dorset woodland and provides sanctuary for over 150 primates.

Wareham, BH20 6HH, Wiltshire, England

46. Swanage Armed Forces Weekend

Festivals and Events

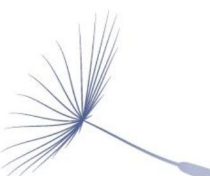


A tribute to Heroes past Present and Future June 19th-20th

Swanage, Bh19, Dorset, England

47. Brownsea Island

Historic Buildings and Monuments, Parks Gardens and Woodlands, Childrens Attractions



Peaceful island of woodland and heath with a wide variety of wildlife, famous for being the birthplace of Scouting and Guiding

Poole, BH13 7EE, Dorset, England



More Information

For more information, you can find us under ref.nr. 88721 on LovetoEscape.com

LovetoEscape.com/holiday-cottages/88721/sailor%27s-watch.htm