

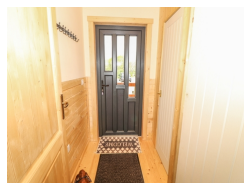
Chale Farm Lodge

**Contact Details:**

Daytime Phone: 01244 356890

Chale
Isle of Wight
PO38 2HB
England

£ 423.00 - £ 3,724.00 per week



This delightful lodge rests in the pretty village of Chale, on the Isle of Wight, England and can sleep six people in three bedrooms.

Facilities:

- **Communications:**
Broadband Internet
- **Entertainment:**
TV
- **Heat:**
Open Fire
- **Kitchen:**
Cooker, Dishwasher, Fridge
- **Laundry:**
Washing Machine
- **Outside Area:**
Enclosed Garden
- **Price Included:**
Linen, Towels

Room Details:

Sleeps: 6

- 1 Double Room**
- 2 Single Rooms**
- 1 Twin Room**
- 2 Bathrooms**

Recommended Attractions

1. Goodwood

Art Gallery, Historic Buildings and Monuments, Nature Reserve, Parks Gardens and Woodlands, Tours and Trips, Visitor Centres and Museums, Childrens Attractions, Zoos Farms and Wildlife Parks, Bistros and Brasseries, Cafes Coffee Shops and Tearooms, Horse Riding and Pony Trekking, Shooting and Fishing, Walking and Climbing



Motor circuit, Stately Home, Racecourse, Aerodrome, Forestry, Organic Farm Shop, Festival of Speed, Goodwood Revival

Chichester, PO18 0PX, West Sussex, England

2. Goodwood Races

Festivals and Events, Horse Racing



Under the family of the Duke of Richmond, Goodwood Races sits only five miles north of the town of Chichester.

Chichester, PO18 0PS, West Sussex, England

3. Arundel Castle and Gardens

Historic Buildings and Monuments, Parks Gardens and Woodlands



This converted Castle and Stately Home is over 1000 years old, and sits on the bank of the River Arun in West Sussex

Arundel, BN18 9AB, West Sussex, England

4. Chichester Cathedral

Historic Buildings and Monuments, Tours and Trips



This 900 Year Old Cathedral has been visited millions of times by people of all faiths and denominations.

Chichester, PO19 1PX, West Sussex, England

5. Petworth House

Historic Buildings and Monuments, Parks Gardens and Woodlands



Petworth House is a grade 1 listed building from the 17th Century. Set in an idyllic 700-acre Deer Park, it makes a great day out for viewing the historic building and walking in the verdant park surrounding it.

Petworth, GU28 0AE, West Sussex, England

6. Bucklers Hard

Visitor Centres and Museums, Childrens Attractions



Bucklers Hard is a 18th century maritime village which is situated on the Beaulieu River, it has a stunning Marina and plenty to see in the village.

Brockenhurst, SO42 7XB, Hampshire, England

7. Beaulieu Estate

Historic Buildings and Monuments, Visitor Centres and Museums, Childrens Attractions



Beaulieu is situated in the New Forest National Park, it is the perfect place for a fun day including museums, the historic abbey and the list goes on

Brockenhurst, SO42 7ZN, Hampshire, England

8. Paultons Park

Theme Parks



Paultons Family Theme Park is a great day out, there are a wide selection of rides allowing you to have the most fun and exciting day out.

The New Forest, SO51 6AL, Hampshire, England

9. Babbacombe Model Village

Childrens Attractions



Thousands of miniature buildings, people and vehicles capture the essence of England's past, present and future

Babbacombe, TQ1 3LA, Devon, England

 Highly Recommended by Chale Farm Lodge!

10. Dunster Castle

Historic Buildings and Monuments, Parks Gardens and Woodlands



National Trust Property with subtropical terraced garden

Dunster, TA24 6SL, Somerset, England

 Highly Recommended by Chale Farm Lodge!

11. Exmoor National Park

Parks Gardens and Woodlands, Horse Riding and Pony Trekking, Shooting and Fishing, Walking and Climbing



Beautiful national park spanning Somerset and Devon

Dulverton, TA22 9HL, Somerset, England

 **Highly Recommended by Chale Farm Lodge!**


12. Blackpool Sands Beach Devon

Beaches, Childrens Attractions, Cafes Coffee Shops and Tearooms, Shops, Sailing and Watersports



Award-winning family beach with turquoise blue sea giving it an almost Mediterranean feel.

Dartmouth, TQ6 0RG, Devon, England

 **Highly Recommended by Chale Farm Lodge!**

13. Slapton Sands and Torcross

Beaches, Childrens Attractions, Sailing and Watersports



Fantastic pebble beach in Devon

Slapton, TQ6, Devon, England

 **Highly Recommended by Chale Farm Lodge!**

14. Quince Honey Farm

Visitor Centres and Museums, Childrens Attractions, Zoos Farms and Wildlife Parks, Shops



World famous honey farm - the largest in the country

South Molton, EX36 3AZ, Devon, England

 **Highly Recommended by Chale Farm Lodge!**

15. Lynton and Barnstaple Railway

Tours and Trips, Cafes Coffee Shops and Tearooms, Railways



A restored narrow gauge steam railway in the Exmoor National Park area of North Devon. One mile of the original 19 miles has so far been re-opened.

Martinhoe Cross, Parracombe, EX31 4RA, Devon, England

Phone: 01598 763487

 **Highly Recommended by Chale Farm Lodge!**

16. Saunton Sands Beach

Beaches, Childrens Attractions, Sailing and Watersports



3 miles long sandy beach, ideal for families and popular with surfers

Saunton, EX33, Devon, England

 Highly Recommended by Chale Farm Lodge!

17. Westward Ho! Beach

Beaches, Childrens Attractions



Over 2 miles of sandy beach in North Devon

Westward Ho, TQ1 , Devon, England

 Highly Recommended by Chale Farm Lodge!


18. h2outdoor Adventure Activities North Devon

Tours and Trips, Cycling and Mountain Bikes, Horse Riding and Pony Trekking, Sailing and Watersports, Walking and Climbing, Guided Tours and Day Trips, Guided Walks



A fantastic selection of adventure activities in North Devon. Sea kayaking, canoeing, surfing, coasteering, mountain biking, pony trekking & high ropes are just some of the activities we offer. Suitable for children, groups, stag/hen & corporate

Woolacombe, EX34 7BZ, Devon, England

 Highly Recommended by Chale Farm Lodge!

19. Horse riding holidays in North Devon Croyde

Childrens Attractions, Horse Riding and Pony Trekking



Roylands riding stables cater for all abilities and offer horse riding holidays.

Croyde, EX33, Devon, England

 Highly Recommended by Chale Farm Lodge!

20. The Milky Way Adventure Park

Visitor Centres and Museums, Childrens Attractions, Indoor and Outdoor Play Areas



North Devon's largest undercover family attraction.

Bideford, EX39 5RY, Devon, England

 **Highly Recommended by Chale Farm Lodge!**


21. Lanhydrock

Historic Buildings and Monuments, Parks Gardens and Woodlands, Visitor Centres and Museums, Childrens Attractions, Indoor and Outdoor Play Areas, Cafes Coffee Shops and Tearooms, Restaurants



Magnificent late Victorian country house with extensive servants' quarters, gardens and wooded estate

Bodmin, PL30 5AD, Cornwall, England

 **Highly Recommended by Chale Farm Lodge!**

22. Tintagel and Tintagel Castle

Beaches, Historic Buildings and Monuments, Lochs Lakes and Waterfalls, Parks Gardens and Woodlands, Visitor Centres and Museums, Childrens Attractions, Cafes Coffee Shops and Tearooms, Pubs and Bars, Shops



Breathtaking ruined castle on the Cornish Coast - mythical home of King Arthur

Tintagel, PL34, Cornwall, England

 **Highly Recommended by Chale Farm Lodge!**

23. Lundy Island

Beaches, Tours and Trips, Childrens Attractions, Pubs and Bars, Walking and Climbing



Lundy Island and Nature Reserve

Bideford, EX39 2LY, Devon, England

 **Highly Recommended by Chale Farm Lodge!**

24. Lost Gardens of Heligan

Parks Gardens and Woodlands



One of the most popular botanical gardens in the UK

St Austell, PL26 6EN, Cornwall, England

"A great day out for everyone. Highly recommended by us as a family. Plenty of space for kids to run around. Beautiful gardens and walks."

Highly Recommended by Chale Farm Lodge!

25. Newquay Zoo

Zoos Farms and Wildlife Parks



One of the nation's best zoos, home of many of the world's endangered species.

Newquay, TR7 2LZ, Cornwall, England

Highly Recommended by Chale Farm Lodge!

26. Fistral Beach

Beaches, Sailing and Watersports



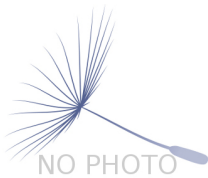
World Famous surfing Beach in Newquay, Cornwall

Newquay, Cornwall, Cornwall, England

Highly Recommended by Chale Farm Lodge!

27. Chateau de Hautefort

Historic Buildings and Monuments, Parks Gardens and Woodlands



Magnificent 17c Castle perched on a hill in a beautiful area of France.

Hautefort, 24390, Dordogne, France

"This chateau is off the hook."

Highly Recommended by Chale Farm Lodge!

28. The Cross Keys Restaurant in Kippen

Pubs and Bars, Restaurants



Traditional and comfortable inn situated in the village of Kippen, Stirlingshire. We serve food all day from soups to sirloins, with home made pies and puddings to finish. Every Sunday is roast day featuring two types of roast. Children Welcome.

Kippen, FK8 3DN, Stirlingshire, Scotland

Phone: 01786 870293

Highly Recommended by Chale Farm Lodge!

29. The Black Watch Museum

Visitor Centres and Museums



Regimental Museum of the Proud and Illustrious Black Watch Regiment in Perth Scotland

Perth, PH1 5HR, Perth and Kinross, Scotland

Highly Recommended by Chale Farm Lodge!

30. Gloagburn Farm Shop and Coffee Shop near Perth

Cafes Coffee Shops and Tearooms, Shops



The Gloagburn Farm Shop and Café are a local business of high quality offering local produce as well as a café.

Tibbermore, PH1 1QL, Perth and Kinross, Scotland

Highly Recommended by Chale Farm Lodge!

31. Scone Palace

Historic Buildings and Monuments, Parks Gardens and Woodlands



Scone Palace occupies a unique position in Scottish History

Perth, PH2 6BD, Perth and Kinross, Scotland

Highly Recommended by Chale Farm Lodge!

32. Scone Palace

Historic Buildings and Monuments, Parks Gardens and Woodlands



Former crowning place of the Kings of Scotland, stunning setting in beautiful grounds. A stately home to visit.

Perth, PH2 6BD, Perth and Kinross, Scotland

Highly Recommended by Chale Farm Lodge!

33. Glamis Castle

Historic Buildings and Monuments



Childhood home of Her Majesty Queen Elisabeth The Queen Mother

Glamis, DD8 1RJ, Angus and Dundee, Scotland

 Highly Recommended by Chale Farm Lodge!

34. The Scottish Crannog Centre

Historic Buildings and Monuments, Visitor Centres and Museums



Archaeological Open-Air Museum

Kenmore Aberfeldy, PH15 2HY, Perth and Kinross, Scotland

 Highly Recommended by Chale Farm Lodge!

35. Enchanted Forest in Perthshire

Festivals and Events, Lochs Lakes and Waterfalls, Parks Gardens and Woodlands, Live Music and Comedy



The Enchanted Forest offers visitors a unique opportunity to experience the outdoors, at night and with spectacular imagery. You will experience a lighting show that is out of this world.

Pitlochry, PH16 5LA, Perth and Kinross, Scotland

 Highly Recommended by Chale Farm Lodge!

36. Blair Castle

Historic Buildings and Monuments, Parks Gardens and Woodlands, Cafes Coffee Shops and Tearooms



Historic Castle

Blair Atholl, PH18 5TL, Perth and Kinross, Scotland

 Highly Recommended by Chale Farm Lodge!

37. Balmoral Castle

Historic Buildings and Monuments, Parks Gardens and Woodlands, Visitor Centres and Museums



5 Star visitor attraction set amongst the magnificent scenery of Royal Deeside

Balmoral, AB35 5TB, Aberdeenshire, Scotland

 Highly Recommended by Chale Farm Lodge!

38. Loch Venachar

Lochs Lakes and Waterfalls



Loch Venachar, The Trossachs

Callander, FK8 3EN, Stirlingshire,
Scotland

"There is a great walk down the southside of the Loch leading past the sailing club and if you branch right you can reach the Byre Inn."

By Chale Farm Lodge

39. Blackgang Chine Adventure Park

Childrens Attractions, Indoor and Outdoor Play Areas



great family fun in a beautiful location, with exciting rides and curious attractions

Blackgang, PO38 2HN, Isle of Wight,
England

40. Ventnor Botanic Gardens

Festivals and Events, Lochs Lakes and Waterfalls, Nature Reserve, Parks Gardens and Woodlands, Tours and Trips, Visitor Centres and Museums, Indoor and Outdoor Play Areas, Cafes Coffee Shops and Tearooms, Shops

Beautiful botanic gardens with cafe and shop.

Ventnor, PO38 1UL, Isle of Wight,
England

41. Ventnor Botanic Garden

Nature Reserve, Parks Gardens and Woodlands, Visitor Centres and Museums, Cafes Coffee Shops and Tearooms

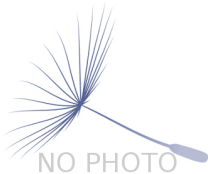


subtropical and exotic plant collection unrivalled elsewhere in the UK.

Ventnor, PO38 1UL, Isle of Wight,
England

42. Appuldurcombe House

Historic Buildings and Monuments, Nature Reserve, Parks Gardens and Woodlands, Zoos Farms and Wildlife Parks, Walking and Climbing



The house, although now a ruin, is surrounded by beautiful parkland and maintained by English Heritage.

Wroxall, PO38 3EW, Isle of Wight,
England

43. Fort Victoria Marine Aquarium

Parks Gardens and Woodlands, Zoos Farms and Wildlife Parks, Walking and Climbing

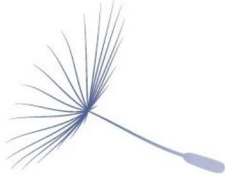


Marine Aquarium in Yarmouth, Isle of Wight

Yarmouth, PO41 0RR, Isle of Wight, England

44. The Needles Old Battery

Historic Buildings and Monuments, Cafes Coffee Shops and Tearooms



Victorian coastal defence perched high above the Needles Rocks

Totland, PO39 0JH, Isle of Wight, England

45. Hurst Castle and Ferry

Historic Buildings and Monuments, Boat Trips



Hurst Castle is a very historical and interesting place to visit, it is also known for its ferries that regularly travel from Keyhaven to the Castle.

Milford on Sea, SO41 0TR, Hampshire, England

46. Swan Adventure Sail - Race Adventure Charter

Sailing and Watersports



Whether you are an experienced sailor looking for your next challenge, or a complete novice seeking a new adrenalin rush, you are welcome to join us on our beautiful classic Swan 55, the Kira.

Lymington, SO41 3QD, Hampshire, England

Phone: 07715 681271

47. The Gun Inn

Pubs and Bars



The Gun Inn is a wonderful pub in Keyhaven.

Lymington, SO41 0TP, Hampshire, England

48. Exbury Gardens & Steam Railway Hampshire

Art Gallery, Festivals and Events, Parks Gardens and Woodlands, Photography Courses, Tours and Trips, Childrens Attractions, Cafes Coffee Shops and Tearooms, Restaurants, Live Entertainment, Live Music and Comedy, Theatres, Shops, Walking and Climbing, Guided Tours and Day Trips, Guided Walks, Railways



Exbury Gardens showcases 200 acres of natural beauty and horticultural variety. Offering peace, tranquility & relaxation, a day spent at Exbury is a day spent in paradise. Let the train take the strain on a journey into the Summer Lane Garden.

Southampton, SO45 1AZ, Hampshire, England

Phone: 02380 891 203



More Information

For more information, you can find us under ref.nr. 89374 on LovetoEscape.com

LovetoEscape.com/holiday-cottages/89374/chale-farm-lodge.htm