

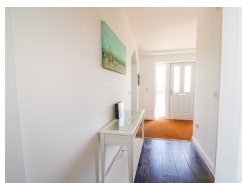
## The Olde Chapel

**Contact Details:**

Daytime Phone: 01244 356890

Boston  
Lincolnshire  
PE22 0LT  
England

£ 551.00 - £ 1,950.00 per week



This delightful former chapel rests in the small hamlet of Scrane End, on the outskirts of Boston, Lincolnshire and can sleep eight people in four bedrooms.

**Facilities:**

- **Communications:**  
Broadband Internet
- **Entertainment:**  
TV
- **Kitchen:**  
Cooker, Dishwasher, Fridge
- **Laundry:**  
Washing Machine
- **Outside Area:**  
Enclosed Garden
- **Price Included:**  
Linen, Towels
- **Special:**  
Cots Available

**Room Details:**

**Sleeps: 8**

**1 Double Room**  
**2 Single Rooms**  
**2 Twin Rooms**  
**2 Bathrooms**

## About Boston and Lincolnshire

Boston is a town and small port in Lincolnshire, England. Boasting a range of pubs, restaurants, shops and supermarkets for your amenities. Discover a wealth of historic tourist attractions nearby, including the St Botolph's Church, Boston Guildhall and a lovely WWII Museum. There is a plethora of countryside to explore with the nearby RSPB Nature Reserve to explore.

## Recommended Attractions

### 1. Goodwood

*Art Gallery, Historic Buildings and Monuments, Nature Reserve, Parks Gardens and Woodlands, Tours and Trips, Visitor Centres and Museums, Childrens Attractions, Zoos Farms and Wildlife Parks, Bistros and Brasseries, Cafes Coffee Shops and Tearooms, Horse Riding and Pony Trekking, Shooting and Fishing, Walking and Climbing*



Motor circuit, Stately Home, Racecourse, Aerodrome, Forestry, Organic Farm Shop, Festival of Speed, Goodwood Revival

Chichester, PO18 0PX, West Sussex, England

### 2. Goodwood Races

*Festivals and Events, Horse Racing*



Under the family of the Duke of Richmond, Goodwood Races sits only five miles north of the town of Chichester.

Chichester, PO18 0PS, West Sussex, England

### 3. Arundel Castle and Gardens

*Historic Buildings and Monuments, Parks Gardens and Woodlands*



This converted Castle and Stately Home is over 1000 years old, and sits on the bank of the River Arun in West Sussex

Arundel, BN18 9AB, West Sussex, England

### 4. Chichester Cathedral

*Historic Buildings and Monuments, Tours and Trips*



This 900 Year Old Cathedral has been visited millions of times by people of all faiths and denominations.

Chichester, PO19 1PX, West Sussex, England

### 5. Petworth House

*Historic Buildings and Monuments, Parks Gardens and Woodlands*



Petworth House is a grade 1 listed building from the 17th Century. Set in an idyllic 700-acre Deer Park, it makes a great day out for viewing the historic building and walking in the verdant park surrounding it.

Petworth, GU28 0AE, West Sussex, England

## 6. Bucklers Hard

*Visitor Centres and Museums, Childrens Attractions*



Bucklers Hard is a 18th century maritime village which is situated on the Beaulieu River, it has a stunning Marina and plenty to see in the village.

Brockenhurst, SO42 7XB, Hampshire, England

## 7. Beaulieu Estate

*Historic Buildings and Monuments, Visitor Centres and Museums, Childrens Attractions*



Beaulieu is situated in the New Forest National Park, it is the perfect place for a fun day including museums, the historic abbey and the list goes on

Brockenhurst, SO42 7ZN, Hampshire, England

## 8. Paultons Park

*Theme Parks*



Paultons Family Theme Park is a great day out, there are a wide selection of rides allowing you to have the most fun and exciting day out.

The New Forest, SO51 6AL, Hampshire, England

## 9. Dunster Castle

*Historic Buildings and Monuments, Parks Gardens and Woodlands*



National Trust Property with subtropical terraced garden

Dunster, TA24 6SL, Somerset, England

 **Highly Recommended by The Olde Chapel!**

## 10. Exmoor National Park

*Parks Gardens and Woodlands, Horse Riding and Pony Trekking, Shooting and Fishing, Walking and Climbing*



Beautiful national park spanning Somerset and Devon

Dulverton, TA22 9HL, Somerset, England

 **Highly Recommended by The Olde Chapel!**

## 11. Lynton and Barnstaple Railway

*Tours and Trips, Cafes Coffee Shops and Tearooms, Railways*



A restored narrow gauge steam railway in the Exmoor National Park area of North Devon. One mile of the original 19 miles has so far been re-opened.

Martinhoe Cross, Parracombe, EX31 4RA, Devon, England

**Phone:** 01598 763487

 **Highly Recommended by The Olde Chapel!**

---

## 12. Quince Honey Farm

*Visitor Centres and Museums, Childrens Attractions, Zoos Farms and Wildlife Parks, Shops*



World famous honey farm - the largest in the country

South Molton, EX36 3AZ, Devon, England

 **Highly Recommended by The Olde Chapel!**

---

## 13. h2outdoor Adventure Activities North Devon

*Tours and Trips, Cycling and Mountain Bikes, Horse Riding and Pony Trekking, Sailing and Watersports, Walking and Climbing, Guided Tours and Day Trips, Guided Walks*



A fantastic selection of adventure activities in North Devon. Sea kayaking, canoeing, surfing, coasteering, mountain biking, pony trekking & high ropes are just some of the activities we offer. Suitable for children, groups, stag/hen & corporate

Woolacombe, EX34 7BZ, Devon, England

 **Highly Recommended by The Olde Chapel!**

---

## 14. Horse riding holidays in North Devon Croyde

*Childrens Attractions, Horse Riding and Pony Trekking*



Roylands riding stables cater for all abilities and offer horse riding holidays.

Croyde, EX33, Devon, England

 **Highly Recommended by The Olde Chapel!**

---

## 15. Saunton Sands Beach

*Beaches, Childrens Attractions, Sailing and Watersports*



3 miles long sandy beach, ideal for families and popular with surfers

Saunton, EX33, Devon, England

 **Highly Recommended by The Olde Chapel!**

---

## 16. Westward Ho! Beach

*Beaches, Childrens Attractions*



Over 2 miles of sandy beach in North Devon

Westward Ho, TQ1 , Devon, England

 **Highly Recommended by The Olde Chapel!**

## 17. Babbacombe Model Village

*Childrens Attractions*



Thousands of miniature buildings, people and vehicles capture the essence of England's past, present and future

Babbacombe, TQ1 3LA, Devon, England

 **Highly Recommended by The Olde Chapel!**

## 18. The Milky Way Adventure Park

*Visitor Centres and Museums, Childrens Attractions, Indoor and Outdoor Play Areas*



North Devon's largest undercover family attraction.

Bideford, EX39 5RY, Devon, England

 **Highly Recommended by The Olde Chapel!**

## 19. Lundy Island

*Beaches, Tours and Trips, Childrens Attractions, Pubs and Bars, Walking and Climbing*



Lundy Island and Nature Reserve

Bideford, EX39 2LY, Devon, England

 **Highly Recommended by The Olde Chapel!**

## 20. Blackpool Sands Beach Devon

*Beaches, Childrens Attractions, Cafes Coffee Shops and Tearooms, Shops, Sailing and Watersports*



Award-winning family beach with turquoise blue sea giving it an almost Mediterranean feel.

Dartmouth, TQ6 0RG, Devon, England

 Highly Recommended by The Olde Chapel!

---

### 21. Slapton Sands and Torcross

*Beaches, Childrens Attractions, Sailing and Watersports*



Fantastic pebble beach in Devon

Slapton, TQ6, Devon, England

 Highly Recommended by The Olde Chapel!

---

### 22. Tintagel and Tintagel Castle

*Beaches, Historic Buildings and Monuments, Lochs Lakes and Waterfalls, Parks Gardens and Woodlands, Visitor Centres and Museums, Childrens Attractions, Cafes Coffee Shops and Tearooms, Pubs and Bars, Shops*



Breathtaking ruined castle on the Cornish Coast - mythical home of King Arthur

Tintagel, PL34, Cornwall, England

 Highly Recommended by The Olde Chapel!

---

### 23. Lanhydrock

*Historic Buildings and Monuments, Parks Gardens and Woodlands, Visitor Centres and Museums, Childrens Attractions, Indoor and Outdoor Play Areas, Cafes Coffee Shops and Tearooms, Restaurants*



Magnificent late Victorian country house with extensive servants' quarters, gardens and wooded estate

Bodmin, PL30 5AD, Cornwall, England

 Highly Recommended by The Olde Chapel!

---

### 24. The Black Watch Museum

*Visitor Centres and Museums*



Regimental Museum of the Proud and Ilustrious Black Watch Regiment in Perth Scotland

Perth, PH1 5HR, Perth and Kinross, Scotland

 Highly Recommended by The Olde Chapel!

---

### 25. The Cross Keys Restaurant in Kippen

*Pubs and Bars, Restaurants*





Traditional and comfortable inn situated in the village of Kippen, Stirlingshire. We serve food all day from soups to sirloins, with home made pies and puddings to finish. Every Sunday is roast day featuring two types of roast. Children Welcome.

Kippen, FK8 3DN, Stirlingshire, Scotland

**Phone:** 01786 870293

**Highly Recommended by The Olde Chapel!**

## 26. Scone Palace

*Historic Buildings and Monuments, Parks Gardens and Woodlands*



Scone Palace occupies a unique position in Scottish History

Perth, PH2 6BD, Perth and Kinross, Scotland

**Highly Recommended by The Olde Chapel!**

## 27. Scone Palace

*Historic Buildings and Monuments, Parks Gardens and Woodlands*



Former crowning place of the Kings of Scotland, stunning setting in beautiful grounds. A stately home to visit.

Perth, PH2 6BD, Perth and Kinross, Scotland

**Highly Recommended by The Olde Chapel!**

## 28. Gloagburn Farm Shop and Coffee Shop near Perth

*Cafes Coffee Shops and Tearooms, Shops*



The Gloagburn Farm Shop and Café are a local business of high quality offering local produce as well as a café.

Tibbermore, PH1 1QL, Perth and Kinross, Scotland

**Highly Recommended by The Olde Chapel!**

## 29. Lost Gardens of Heligan

*Parks Gardens and Woodlands*



One of the most popular botanical gardens in the UK

St Austell, PL26 6EN, Cornwall, England



"A great day out for everyone. Highly recommended by us as a family. Plenty of space for kids to run around. Beautiful gardens and walks."

 **Highly Recommended by The Olde Chapel!**

---

### 30. Glamis Castle

*Historic Buildings and Monuments*



Childhood home of Her Majesty Queen Elisabeth The Queen Mother

Glamis, DD8 1RJ, Angus and Dundee, Scotland

 **Highly Recommended by The Olde Chapel!**

---

### 31. Newquay Zoo

*Zoos Farms and Wildlife Parks*



One of the nations's best zoos, home of many of the world's endangered species.

Newquay, TR7 2LZ, Cornwall, England

 **Highly Recommended by The Olde Chapel!**

---

### 32. Fistral Beach

*Beaches, Sailing and Watersports*



World Famous surfing Beach in Newquay, Cornwall

Newquay, Cornwall, Cornwall, England

 **Highly Recommended by The Olde Chapel!**

---

### 33. The Scottish Crannog Centre

*Historic Buildings and Monuments, Visitor Centres and Museums*



Archaeological Open-Air Museum

Kenmore Aberfeldy, PH15 2HY, Perth and Kinross, Scotland

 **Highly Recommended by The Olde Chapel!**

---

### 34. Enchanted Forest in Perthshire

*Festivals and Events, Lochs Lakes and Waterfalls, Parks Gardens and Woodlands, Live Music and Comedy*



The Enchanted Forest offers visitors a unique opportunity to experience the outdoors, at night and with spectacular imagery. You will experience a lighting show that is out of this world.

Pitlochry, PH16 5LA, Perth and Kinross, Scotland

Highly Recommended by The Olde Chapel!

### 35. Blair Castle

*Historic Buildings and Monuments, Parks Gardens and Woodlands, Cafes Coffee Shops and Tearooms*



Historic Castle

Blair Atholl, PH18 5TL, Perth and Kinross, Scotland

Highly Recommended by The Olde Chapel!

### 36. Balmoral Castle

*Historic Buildings and Monuments, Parks Gardens and Woodlands, Visitor Centres and Museums*



5 Star visitor attraction set amongst the magnificent scenery of Royal Deeside

Balmoral, AB35 5TB, Aberdeenshire, Scotland

Highly Recommended by The Olde Chapel!

### 37. Brora golf club

Golf



Brora Golf Club, a traditional links course, designed by James Braid, where little has changed since he left in 1923.

Brora, KW9 6QS, The Highlands, Scotland

"Wonderful Braid course in top 100 best courses UK and Ireland."

Highly Recommended by The Olde Chapel!

### 38. Dunrobin Castle Golspie Sutherland

*Historic Buildings and Monuments, Visitor Centres and Museums*



Seat of the Duke of Sutherland. Originally built in 1401 and rebuilt in 1835. Castle Tour and Falconry Displays a Must. Open between April and Oct

Golspie, KW10 6RS, The Highlands, Scotland

"Castle of fairy tales which looks dramatic from the sea. Falconry display and museum worth visiting too."

Highly Recommended by The Olde Chapel!

**39. Loch Venachar***Lochs Lakes and Waterfalls*

Loch Venachar, The Trossachs

Callander, FK8 3EN, Stirlingshire,  
Scotland*"There is a great walk down the southside of the Loch leading past the sailing club and if you branch right you can reach the Byre Inn."*

By The Olde Chapel

**40. RSPB Frampton Marsh Nature Reserve Lincolnshire***Nature Reserve, Visitor Centres and Museums, Childrens Attractions, Zoos Farms and Wildlife Parks*RSPB Nature Reserve and Visitor Centre. A major new extension to  
this coastal wetland reserveFrampton, PE20 1AY, Lincolnshire,  
England**41. Maud Foster Windmill***Historic Buildings and Monuments, Cafes Coffee Shops and Tearooms*One of the tallest working mills in the British Isles. Climb 7 floors and  
see flour being made. Tea Room and ShopBoston, PE21 9EG, Lincolnshire,  
England**42. The Butterfly & Wildlife Park***Visitor Centres and Museums, Childrens Attractions, Zoos Farms and Wildlife Parks*

A wild &amp; wonderfull experience you'll never forget

Spalding, PE12 9LE, Lincolnshire,  
England**43. Lincolnshire Aviation Museum***Visitor Centres and Museums*

Aviation museum with their own Lancaster bomber!

East Kirkby, PE23 4DE, Lincolnshire,  
England

#### 44. Tattershall Castle

*Historic Buildings and Monuments, Parks Gardens and Woodlands, Childrens Attractions, Cafes Coffee Shops and Tearooms*



Dramatic 15th-century red-brick tower, with six floors to explore

Lincoln, LN4 4LR, Lincolnshire, England

#### 45. Gibraltar Point National Nature Reserve

*Nature Reserve, Childrens Attractions*

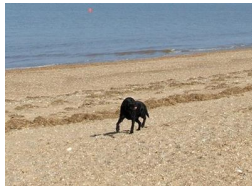


The reserve covers three miles of coast from Skegness to The Wash

Skegness, Lincolnshire, Lincolnshire, England

#### 46. Snettisham Beach and RSPB Sanctuary

*Beaches*



Beautiful stretch of beach in West Norfolk, with nearby RSPB bird sanctuary

Snettisham, PE31 7PD, Norfolk, England

#### 47. Hunstanton Sea Life Sanctuary

*Aquariums, Zoos Farms and Wildlife Parks*



Seal rescue centre and wildlife park on the west Norfolk Coast

Hunstanton, PE36 5BH, Norfolk, England

#### 48. Hunstanton Beach

*Beaches*



Excellent beach at Hunstanton, seaside resort on the north-west Norfolk coast

Hunstanton, PE36 5BH, Norfolk, England



### More Information

For more information, you can find us under ref.nr. 89616 on LovetoEscape.com

[LovetoEscape.com/holiday-cottages/89616/the-olde-chapel.htm](https://LovetoEscape.com/holiday-cottages/89616/the-olde-chapel.htm)