

Boundcliffe Farm

**Contact Details:**

Daytime Phone: 01244 356890

Allerston
North Yorkshire
YO18 7PG
England

£ 667.00 - £ 2,274.00 per week



Sleeping ten people over four bedrooms, this detached stone cottage in the village of Allerston is spacious and traditional, and makes a marvellous base for families or friends.

Facilities:

- **Communications:**
Broadband Internet
- **Entertainment:**
TV
- **Heat:**
Open Fire
- **Kitchen:**
Cooker, Dishwasher, Fridge
- **Laundry:**
Washing Machine
- **Price Included:**
Linen, Towels
- **Special:**
Cots Available

Room Details:

Sleeps: 10

3 Double Rooms

4 Single Rooms

3 Twin Rooms

2 Bathrooms

About Allerston and North Yorkshire

Set on the edge of the Forge Valley, the village of Allerston is within easy distance of Pickering, a bustling market town with a castle. Allerston is a picturesque village, with a stream running through on its way to the River Derwent. Allerston is set in an Area of Outstanding Natural Beauty, and is made up of pretty stone cottages, and makes a wonderful holiday base. There is so much to do in the area, such as horse riding, a gold course, a childrens playground and Dalby Forest, which offers some wonderful walking and cycle routes. The coast is within a short drive, so head to the beaches of Scarborough and Whitby, or out onto the wonderful Moors; a great holiday base.

Recommended Attractions

1. Goodwood

Art Gallery, Historic Buildings and Monuments, Nature Reserve, Parks Gardens and Woodlands, Tours and Trips, Visitor Centres and Museums, Childrens Attractions, Zoos Farms and Wildlife Parks, Bistros and Brasseries, Cafes Coffee Shops and Tearooms, Horse Riding and Pony Trekking, Shooting and Fishing, Walking and Climbing



Motor circuit, Stately Home, Racecourse, Aerodrome, Forestry, Organic Farm Shop, Festival of Speed, Goodwood Revival

Chichester, PO18 0PX, West Sussex, England

2. Goodwood Races

Festivals and Events, Horse Racing



Under the family of the Duke of Richmond, Goodwood Races sits only five miles north of the town of Chichester.

Chichester, PO18 0PS, West Sussex, England

3. Arundel Castle and Gardens

Historic Buildings and Monuments, Parks Gardens and Woodlands



This converted Castle and Stately Home is over 1000 years old, and sits on the bank of the River Arun in West Sussex

Arundel, BN18 9AB, West Sussex, England

4. Chichester Cathedral

Historic Buildings and Monuments, Tours and Trips



This 900 Year Old Cathedral has been visited millions of times by people of all faiths and denominations.

Chichester, PO19 1PX, West Sussex, England

5. Petworth House

Historic Buildings and Monuments, Parks Gardens and Woodlands



Petworth House is a grade 1 listed building from the 17th Century. Set in an idyllic 700-acre Deer Park, it makes a great day out for viewing the historic building and walking in the verdant park surrounding it.

Petworth, GU28 0AE, West Sussex, England

6. Bucklers Hard

Visitor Centres and Museums, Childrens Attractions



Bucklers Hard is a 18th century maritime village which is situated on the Beaulieu River, it has a stunning Marina and plenty to see in the village.

Brockenhurst, SO42 7XB, Hampshire, England

7. Beaulieu Estate

Historic Buildings and Monuments, Visitor Centres and Museums, Childrens Attractions



Beaulieu is situated in the New Forest National Park, it is the perfect place for a fun day including museums, the historic abbey and the list goes on

Brockenhurst, SO42 7ZN, Hampshire, England

8. Paultons Park

Theme Parks



Paultons Family Theme Park is a great day out, there are a wide selection of rides allowing you to have the most fun and exciting day out.

The New Forest, SO51 6AL, Hampshire, England

9. The Black Watch Museum

Visitor Centres and Museums



Regimental Museum of the Proud and Illustrious Black Watch Regiment in Perth Scotland

Perth, PH1 5HR, Perth and Kinross, Scotland

 **Highly Recommended by Boundcliffe Farm!**

10. Scone Palace

Historic Buildings and Monuments, Parks Gardens and Woodlands



Scone Palace occupies a unique position in Scottish History

Perth, PH2 6BD, Perth and Kinross, Scotland

 **Highly Recommended by Boundcliffe Farm!**

11. Scone Palace

Historic Buildings and Monuments, Parks Gardens and Woodlands



Former crowning place of the Kings of Scotland, stunning setting in beautiful grounds. A stately home to visit.

Perth, PH2 6BD, Perth and Kinross, Scotland

Highly Recommended by Boundcliffe Farm!

12. Gloagburn Farm Shop and Coffee Shop near Perth

Cafes Coffee Shops and Tearooms, Shops



The Gloagburn Farm Shop and Café are a local business of high quality offering local produce as well as a café.

Tibbermore, PH1 1QL, Perth and Kinross, Scotland

Highly Recommended by Boundcliffe Farm!

13. Glamis Castle

Historic Buildings and Monuments



Childhood home of Her Majesty Queen Elisabeth The Queen Mother

Glamis, DD8 1RJ, Angus and Dundee, Scotland

Highly Recommended by Boundcliffe Farm!

14. The Cross Keys Restaurant in Kippen

Pubs and Bars, Restaurants



Traditional and comfortable inn situated in the village of Kippen, Stirlingshire. We serve food all day from soups to sirloins, with home made pies and puddings to finish. Every Sunday is roast day featuring two types of roast. Children Welcome.

Kippen, FK8 3DN, Stirlingshire, Scotland

Phone: 01786 870293

Highly Recommended by Boundcliffe Farm!

15. The Scottish Crannog Centre

Historic Buildings and Monuments, Visitor Centres and Museums



Archaeological Open-Air Museum

Kenmore Aberfeldy, PH15 2HY, Perth and Kinross, Scotland

Highly Recommended by Boundcliffe Farm!

16. Enchanted Forest in Perthshire

Festivals and Events, Lochs Lakes and Waterfalls, Parks Gardens and Woodlands, Live Music and Comedy



The Enchanted Forest offers visitors a unique opportunity to experience the outdoors, at night and with spectacular imagery. You will experience a lighting show that is out of this world.

Pitlochry, PH16 5LA, Perth and Kinross, Scotland

Highly Recommended by Boundcliffe Farm!

17. Blair Castle

Historic Buildings and Monuments, Parks Gardens and Woodlands, Cafes Coffee Shops and Tearooms



Historic Castle

Blair Atholl, PH18 5TL, Perth and Kinross, Scotland

Highly Recommended by Boundcliffe Farm!

18. Balmoral Castle

Historic Buildings and Monuments, Parks Gardens and Woodlands, Visitor Centres and Museums



5 Star visitor attraction set amongst the magnificent scenery of Royal Deeside

Balmoral, AB35 5TB, Aberdeenshire, Scotland

Highly Recommended by Boundcliffe Farm!

19. Dunster Castle

Historic Buildings and Monuments, Parks Gardens and Woodlands



National Trust Property with subtropical terraced garden

Dunster, TA24 6SL, Somerset, England

Highly Recommended by Boundcliffe Farm!

20. Lynton and Barnstaple Railway

Tours and Trips, Cafes Coffee Shops and Tearooms, Railways



A restored narrow gauge steam railway in the Exmoor National Park area of North Devon. One mile of the original 19 miles has so far been re-opened.

Martinhoe Cross, Parracombe, EX31 4RA, Devon, England

Phone: 01598 763487

Highly Recommended by Boundcliffe Farm!

21. Exmoor National Park

Parks Gardens and Woodlands, Horse Riding and Pony Trekking, Shooting and Fishing, Walking and Climbing



Beautiful national park spanning Somerset and Devon

Dulverton, TA22 9HL, Somerset, England

 **Highly Recommended by Boundcliffe Farm!**

22. h2outdoor Adventure Activities North Devon

Tours and Trips, Cycling and Mountain Bikes, Horse Riding and Pony Trekking, Sailing and Watersports, Walking and Climbing, Guided Tours and Day Trips, Guided Walks



A fantastic selection of adventure activities in North Devon. Sea kayaking, canoeing, surfing, coasteering, mountain biking, pony trekking & high ropes are just some of the activities we offer. Suitable for children, groups, stag/hen & corporate

Woolacombe, EX34 7BZ, Devon, England

 **Highly Recommended by Boundcliffe Farm!**

23. Quince Honey Farm

Visitor Centres and Museums, Childrens Attractions, Zoos Farms and Wildlife Parks, Shops



World famous honey farm - the largest in the country

South Molton, EX36 3AZ, Devon, England

 **Highly Recommended by Boundcliffe Farm!**

24. Horse riding holidays in North Devon Croyde

Childrens Attractions, Horse Riding and Pony Trekking



Roylands riding stables cater for all abilities and offer horse riding holidays.

Croyde, EX33, Devon, England

 **Highly Recommended by Boundcliffe Farm!**

25. Saunton Sands Beach

Beaches, Childrens Attractions, Sailing and Watersports



3 miles long sandy beach, ideal for families and popular with surfers

Saunton, EX33, Devon, England

 **Highly Recommended by Boundcliffe Farm!**

26. Westward Ho! Beach

Beaches, Childrens Attractions



Over 2 miles of sandy beach in North Devon

Westward Ho, TQ1 , Devon, England

 **Highly Recommended by Boundcliffe Farm!**

27. Lundy Island

Beaches, Tours and Trips, Childrens Attractions, Pubs and Bars, Walking and Climbing



Lundy Island and Nature Reserve

Bideford, EX39 2LY, Devon, England

 **Highly Recommended by Boundcliffe Farm!**

28. The Milky Way Adventure Park

Visitor Centres and Museums, Childrens Attractions, Indoor and Outdoor Play Areas



North Devon's largest undercover family attraction.

Bideford, EX39 5RY, Devon, England

 **Highly Recommended by Boundcliffe Farm!**

29. Babbacombe Model Village

Childrens Attractions



Thousands of miniature buildings, people and vehicles capture the essence of England's past, present and future

Babbacombe, TQ1 3LA, Devon, England

 **Highly Recommended by Boundcliffe Farm!**

30. Brora golf club

Golf



Brora Golf Club, a traditional links course, designed by James Braid, where little has changed since he left in 1923.

Brora, KW9 6QS, The Highlands, Scotland

"Wonderful Braid course in top 100 best courses UK and Ireland."

 **Highly Recommended by Boundcliffe Farm!**

31. Dunrobin Castle Golspie Sutherland

Historic Buildings and Monuments, Visitor Centres and Museums



Seat of the Duke of Sutherland. Originally built in 1401 and rebuilt in 1835. Castle Tour and Falconry Displays a Must. Open between April and Oct

Golspie, KW10 6RS, The Highlands, Scotland

"Castle of fairy tales which looks dramatic from the sea. Falconry display and museum worth visiting too."

 **Highly Recommended by Boundcliffe Farm!**

32. Blackpool Sands Beach Devon

Beaches, Childrens Attractions, Cafes Coffee Shops and Tearooms, Shops, Sailing and Watersports



Award-winning family beach with turquoise blue sea giving it an almost Mediterranean feel.

Dartmouth, TQ6 0RG, Devon, England

 **Highly Recommended by Boundcliffe Farm!**

33. Slapton Sands and Torcross

Beaches, Childrens Attractions, Sailing and Watersports



Fantastic pebble beach in Devon

Slapton, TQ6, Devon, England

 **Highly Recommended by Boundcliffe Farm!**

34. Tintagel and Tintagel Castle

Beaches, Historic Buildings and Monuments, Lochs Lakes and Waterfalls, Parks Gardens and Woodlands, Visitor Centres and Museums, Childrens Attractions, Cafes Coffee Shops and Tearooms, Pubs and Bars, Shops



Breathtaking ruined castle on the Cornish Coast - mythical home of King Arthur

Tintagel, PL34, Cornwall, England

 Highly Recommended by Boundcliffe Farm!

35. Lanhydrock

Historic Buildings and Monuments, Parks Gardens and Woodlands, Visitor Centres and Museums, Childrens Attractions, Indoor and Outdoor Play Areas, Cafes Coffee Shops and Tearooms, Restaurants



Magnificent late Victorian country house with extensive servants' quarters, gardens and wooded estate

Bodmin, PL30 5AD, Cornwall, England

 Highly Recommended by Boundcliffe Farm!

36. Newquay Zoo

Zoos Farms and Wildlife Parks



One of the nations's best zoos, home of many of the world's endangered species.

Newquay, TR7 2LZ, Cornwall, England

 Highly Recommended by Boundcliffe Farm!

37. Fistral Beach

Beaches, Sailing and Watersports



World Famous surfing Beach in Newquay, Cornwall

Newquay, Cornwall, Cornwall, England

 Highly Recommended by Boundcliffe Farm!

38. Lost Gardens of Heligan

Parks Gardens and Woodlands



One of the most popular botanical gardens in the UK

St Austell, PL26 6EN, Cornwall, England

"A great day out for everyone. Highly recommended by us as a family. Plenty of space for kids to run around. Beautiful gardens and walks."

 Highly Recommended by Boundcliffe Farm!

39. Loch Venachar

Lochs Lakes and Waterfalls



Loch Venachar, The Trossachs

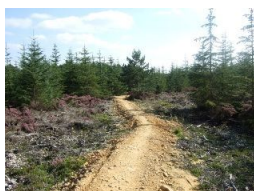
Callander, FK8 3EN, Stirlingshire,
Scotland

"There is a great walk down the southside of the Loch leading past the sailing club and if you branch right you can reach the Byre Inn."

By Boundcliffe Farm

40. Dalby Forest

Parks Gardens and Woodlands



Located in the North York Moors National Park, Dalby Forest provides a tranquil environment and extensive flora and fauna.

Yorkshire, YO18 7RT, North Yorkshire,
England

41. Eden Camp

Visitor Centres and Museums, Childrens Attractions



Eden Camp is the world's only Modern History Theme Museum, telling the story of the events in Britain between 1939 and 1945 in a unique way.

Malton, YO17 6RT, North Yorkshire,
England

42. Scarborough Open Air Theatre

Festivals and Events, Tours and Trips, Live Entertainment, Live Music and Comedy, Theatres



Scarborough's Open Air Theatre is the largest in Europe and was re-opened in 2010 by Her Majesty the Queen. The stage is set on an island in the middle of a lake with fixed seating for the audience opposite; a spectacular venue and unique atmosphere

Scarborough, YO12 2HG, North
Yorkshire, England

Phone: 01723 383636

43. North York Moors Railway

Childrens Attractions, Railways



A nostalgic and enchanting steam or diesel-powered trip through the spectacular North Yorkshire countryside.

Pickering, YO18 7AJ, North Yorkshire,
England

44. Scarborough Castle

Historic Buildings and Monuments

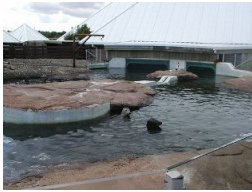


An exceptionally rich historical site on a dramatic rocky headland above the North Sea, Scarborough Castle offers a fascinating day out for all.

Scarborough, YO11 1HY, North Yorkshire, England

45. Scarborough Sea Life Centre

Aquariums, Zoos Farms and Wildlife Parks



All manner of fascinating marine life from beneath the waves is waiting to be discovered - a unique educational outing for visitors of all ages.

Scarborough, YO12 6RP, North Yorkshire, England

46. Rydale Folk Museum

Visitor Centres and Museums, Childrens Attractions



Folk Museum in the North York Moors

Hutton le Hole, YO62 6UA, North Yorkshire, England

47. Heartbeat Country Goathland Village in North Yorkshire

Visitor Centres and Museums

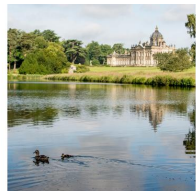


Beautiful village in the North York Moors and the setting for *Heartbeat*;

Goathland, YO22 5, North Yorkshire, England

48. Castle Howard House and Gardens York

Historic Buildings and Monuments, Parks Gardens and Woodlands, Visitor Centres and Museums, Cafes Coffee Shops and Tearooms, Group Travel



Castle Howard, near York, is one of Britain's finest stately homes. A magnificent historic house in the north of England with ornate interiors, landscaped gardens and adventure playground for a great family day out.

York, YO60 7DA, North Yorkshire, England

Phone: 01653 648333



More Information

For more information, you can find us under ref.nr. 89948 on LovetoEscape.com

LovetoEscape.com/holiday-cottages/89948/boundcliffe-farm.htm