

## 11 Highfield

**Contact Details:**

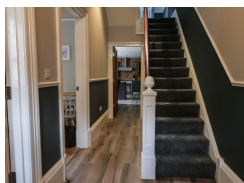
Daytime Phone: 01244 356890

Scarborough

YO12 4AW

England

£ 925.00 - £ 4,500.00 per week

**Facilities:**

- **Communications:**  
Broadband Internet
- **Entertainment:**  
TV
- **Exercise:**  
Jacuzzi / Hot Tub
- **Kitchen:**  
Cooker, Dishwasher, Fridge
- **Laundry:**  
Washing Machine
- **Outside Area:**  
Enclosed Garden
- **Price Included:**  
Linen, Towels
- **Special:**  
Cots Available

**Room Details:**

Sleeps: 10

2 Double Rooms

4 Single Rooms

2 Twin Rooms

3 Bathrooms

## Recommended Attractions

### 1. Goodwood

*Art Gallery, Historic Buildings and Monuments, Nature Reserve, Parks Gardens and Woodlands, Tours and Trips, Visitor Centres and Museums, Childrens Attractions, Zoos Farms and Wildlife Parks, Bistros and Brasseries, Cafes Coffee Shops and Tearooms, Horse Riding and Pony Trekking, Shooting and Fishing, Walking and Climbing*



Motor circuit, Stately Home, Racecourse, Aerodrome, Forestry, Organic Farm Shop, Festival of Speed, Goodwood Revival

Chichester, PO18 0PX, West Sussex, England

### 2. Goodwood Races

*Festivals and Events, Horse Racing*



Under the family of the Duke of Richmond, Goodwood Races sits only five miles north of the town of Chichester.

Chichester, PO18 0PS, West Sussex, England

### 3. Arundel Castle and Gardens

*Historic Buildings and Monuments, Parks Gardens and Woodlands*



This converted Castle and Stately Home is over 1000 years old, and sits on the bank of the River Arun in West Sussex

Arundel, BN18 9AB, West Sussex, England

### 4. Chichester Cathedral

*Historic Buildings and Monuments, Tours and Trips*



This 900 Year Old Cathedral has been visited millions of times by people of all faiths and denominations.

Chichester, PO19 1PX, West Sussex, England

### 5. Petworth House

*Historic Buildings and Monuments, Parks Gardens and Woodlands*



Petworth House is a grade 1 listed building from the 17th Century. Set in an idyllic 700-acre Deer Park, it makes a great day out for viewing the historic building and walking in the verdant park surrounding it.

Petworth, GU28 0AE, West Sussex, England

## 6. Bucklers Hard

Visitor Centres and Museums, Childrens Attractions



Bucklers Hard is a 18th century maritime village which is situated on the Beaulieu River, it has a stunning Marina and plenty to see in the village.

Brockenhurst, SO42 7XB, Hampshire, England

## 7. Beaulieu Estate

Historic Buildings and Monuments, Visitor Centres and Museums, Childrens Attractions



Beaulieu is situated in the New Forest National Park, it is the perfect place for a fun day including museums, the historic abbey and the list goes on

Brockenhurst, SO42 7ZN, Hampshire, England

## 8. Paultons Park

Theme Parks



Paultons Family Theme Park is a great day out, there are a wide selection of rides allowing you to have the most fun and exciting day out.

The New Forest, SO51 6AL, Hampshire, England

## 9. The Black Watch Museum

Visitor Centres and Museums



Regimental Museum of the Proud and Illustrious Black Watch Regiment in Perth Scotland

Perth, PH1 5HR, Perth and Kinross, Scotland

 **Highly Recommended by 11 Highfield!**

## 10. Scone Palace

Historic Buildings and Monuments, Parks Gardens and Woodlands



Scone Palace occupies a unique position in Scottish History

Perth, PH2 6BD, Perth and Kinross, Scotland

 **Highly Recommended by 11 Highfield!**

## 11. Scone Palace

Historic Buildings and Monuments, Parks Gardens and Woodlands



Former crowning place of the Kings of Scotland, stunning setting in beautiful grounds. A stately home to visit.

Perth, PH2 6BD, Perth and Kinross, Scotland

Highly Recommended by 11 Highfield!

## 12. Glamis Castle

*Historic Buildings and Monuments*



Childhood home of Her Majesty Queen Elisabeth The Queen Mother

Glamis, DD8 1RJ, Angus and Dundee, Scotland

Highly Recommended by 11 Highfield!

## 13. Gloagburn Farm Shop and Coffee Shop near Perth

*Cafes Coffee Shops and Tearooms, Shops*



The Gloagburn Farm Shop and Café are a local business of high quality offering local produce as well as a café.

Tibbermore, PH1 1QL, Perth and Kinross, Scotland

Highly Recommended by 11 Highfield!

## 14. The Cross Keys Restaurant in Kippen

*Pubs and Bars, Restaurants*



Traditional and comfortable inn situated in the village of Kippen, Stirlingshire. We serve food all day from soups to sirloins, with home made pies and puddings to finish. Every Sunday is roast day featuring two types of roast. Children Welcome.

Kippen, FK8 3DN, Stirlingshire, Scotland

**Phone:** 01786 870293

Highly Recommended by 11 Highfield!

## 15. The Scottish Crannog Centre

*Historic Buildings and Monuments, Visitor Centres and Museums*



Archaeological Open-Air Museum

Kenmore Aberfeldy, PH15 2HY, Perth and Kinross, Scotland

Highly Recommended by 11 Highfield!

## 16. Enchanted Forest in Perthshire

*Festivals and Events, Lochs Lakes and Waterfalls, Parks Gardens and Woodlands, Live Music and Comedy*



The Enchanted Forest offers visitors a unique opportunity to experience the outdoors, at night and with spectacular imagery. You will experience a lighting show that is out of this world.

Pitlochry, PH16 5LA, Perth and Kinross, Scotland

Highly Recommended by 11 Highfield!

### 17. Blair Castle

*Historic Buildings and Monuments, Parks Gardens and Woodlands, Cafes Coffee Shops and Tearooms*



Historic Castle

Blair Atholl, PH18 5TL, Perth and Kinross, Scotland

Highly Recommended by 11 Highfield!

### 18. Balmoral Castle

*Historic Buildings and Monuments, Parks Gardens and Woodlands, Visitor Centres and Museums*



5 Star visitor attraction set amongst the magnificent scenery of Royal Deeside

Balmoral, AB35 5TB, Aberdeenshire, Scotland

Highly Recommended by 11 Highfield!

### 19. Dunster Castle

*Historic Buildings and Monuments, Parks Gardens and Woodlands*



National Trust Property with subtropical terraced garden

Dunster, TA24 6SL, Somerset, England

Highly Recommended by 11 Highfield!

### 20. Lynton and Barnstaple Railway

*Tours and Trips, Cafes Coffee Shops and Tearooms, Railways*



A restored narrow gauge steam railway in the Exmoor National Park area of North Devon. One mile of the original 19 miles has so far been re-opened.

Martinhoe Cross, Parracombe, EX31 4RA, Devon, England

**Phone:** 01598 763487

Highly Recommended by 11 Highfield!

### 21. Exmoor National Park

*Parks Gardens and Woodlands, Horse Riding and Pony Trekking, Shooting and Fishing, Walking and Climbing*



Beautiful national park spanning Somerset and Devon

Dulverton, TA22 9HL, Somerset, England

 Highly Recommended by 11 Highfield!

### 22. h2outdoor Adventure Activities North Devon

*Tours and Trips, Cycling and Mountain Bikes, Horse Riding and Pony Trekking, Sailing and Watersports, Walking and Climbing, Guided Walks, Guided Tours and Day Trips*



A fantastic selection of adventure activities in North Devon. Sea kayaking, canoeing, surfing, coasteering, mountain biking, pony trekking & high ropes are just some of the activities we offer. Suitable for children, groups, stag/hen & corporate

Woolacombe, EX34 7BZ, Devon, England

 Highly Recommended by 11 Highfield!

### 23. Quince Honey Farm

*Visitor Centres and Museums, Childrens Attractions, Zoos Farms and Wildlife Parks, Shops*



World famous honey farm - the largest in the country

South Molton, EX36 3AZ, Devon, England

 Highly Recommended by 11 Highfield!

### 24. Horse riding holidays in North Devon Croyde

*Childrens Attractions, Horse Riding and Pony Trekking*



Roylands riding stables cater for all abilities and offer horse riding holidays.

Croyde, EX33, Devon, England

 Highly Recommended by 11 Highfield!

### 25. Saunton Sands Beach

*Beaches, Childrens Attractions, Sailing and Watersports*



3 miles long sandy beach, ideal for families and popular with surfers

Saunton, EX33, Devon, England

 **Highly Recommended by 11 Highfield!**

---

### 26. Westward Ho! Beach

*Beaches, Childrens Attractions*



Over 2 miles of sandy beach in North Devon

Westward Ho, TQ1 , Devon, England

 **Highly Recommended by 11 Highfield!**

---

### 27. Lundy Island

*Beaches, Tours and Trips, Childrens Attractions, Pubs and Bars, Walking and Climbing*



Lundy Island and Nature Reserve

Bideford, EX39 2LY, Devon, England

 **Highly Recommended by 11 Highfield!**

---

### 28. The Milky Way Adventure Park

*Visitor Centres and Museums, Childrens Attractions, Indoor and Outdoor Play Areas*



North Devon's largest undercover family attraction.

Bideford, EX39 5RY, Devon, England

 **Highly Recommended by 11 Highfield!**

---

### 29. Brora golf club

*Golf*



Brora Golf Club, a traditional links course, designed by James Braid, where little has changed since he left in 1923.

Brora, KW9 6QS, The Highlands, Scotland

*"Wonderful Braid course in top 100 best courses UK and Ireland."*

 **Highly Recommended by 11 Highfield!**

---

### 30. Dunrobin Castle Golspie Sutherland

*Historic Buildings and Monuments, Visitor Centres and Museums*



Seat of the Duke of Sutherland. Originally built in 1401 and rebuilt in 1835. Castle Tour and Falconry Displays a Must. Open between April and Oct

Golspie, KW10 6RS, The Highlands, Scotland

"Castle of fairy tales which looks dramatic from the sea. Falconry display and museum worth visiting too."

Highly Recommended by 11 Highfield!

### 31. Babbacombe Model Village

*Childrens Attractions*



Thousands of miniature buildings, people and vehicles capture the essence of England's past, present and future

Babbacombe, TQ1 3LA, Devon, England

Highly Recommended by 11 Highfield!

### 32. Blackpool Sands Beach Devon

*Beaches, Childrens Attractions, Cafes Coffee Shops and Tearooms, Shops, Sailing and Watersports*



Award-winning family beach with turquoise blue sea giving it an almost Mediterranean feel.

Dartmouth, TQ6 0RG, Devon, England

Highly Recommended by 11 Highfield!

### 33. Slapton Sands and Torcross

*Beaches, Childrens Attractions, Sailing and Watersports*



Fantastic pebble beach in Devon

Slapton, TQ6, Devon, England

Highly Recommended by 11 Highfield!

### 34. Tintagel and Tintagel Castle

*Beaches, Historic Buildings and Monuments, Lochs Lakes and Waterfalls, Parks Gardens and Woodlands, Visitor Centres and Museums, Childrens Attractions, Cafes Coffee Shops and Tearooms, Pubs and Bars, Shops*



Breathtaking ruined castle on the Cornish Coast - mythical home of King Arthur

Tintagel, PL34, Cornwall, England

Highly Recommended by 11 Highfield!



**35. Lanhydrock**

*Historic Buildings and Monuments, Parks Gardens and Woodlands, Visitor Centres and Museums, Childrens Attractions, Indoor and Outdoor Play Areas, Cafes Coffee Shops and Tearooms, Restaurants*



Magnificent late Victorian country house with extensive servants' quarters, gardens and wooded estate

Bodmin, PL30 5AD, Cornwall, England

**Highly Recommended by 11 Highfield!**

**36. Newquay Zoo**

*Zoos Farms and Wildlife Parks*



One of the nations's best zoos, home of many of the world's endangered species.

Newquay, TR7 2LZ, Cornwall, England

**Highly Recommended by 11 Highfield!**

**37. Fistral Beach**

*Beaches, Sailing and Watersports*



World Famous surfing Beach in Newquay, Cornwall

Newquay, Cornwall, Cornwall, England

**Highly Recommended by 11 Highfield!**

**38. Lost Gardens of Heligan**

*Parks Gardens and Woodlands*



One of the most popular botanical gardens in the UK

St Austell, PL26 6EN, Cornwall, England

*"A great day out for everyone. Highly recommended by us as a family. Plenty of space for kids to run around. Beautiful gardens and walks."*

**Highly Recommended by 11 Highfield!**

### 39. Loch Venachar

*Lochs Lakes and Waterfalls*



Loch Venachar, The Trossachs

Callander, FK8 3EN, Stirlingshire,  
Scotland

*"There is a great walk down the southside of the Loch leading past the sailing club and if you branch right you can reach the Byre Inn."*

By 11 Highfield

### 40. Scarborough Castle

*Historic Buildings and Monuments*

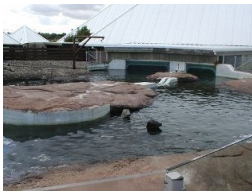


An exceptionally rich historical site on a dramatic rocky headland above the North Sea, Scarborough Castle offers a fascinating day out for all.

Scarborough, YO11 1HY, North  
Yorkshire, England

### 41. Scarborough Sea Life Centre

*Aquariums, Zoos Farms and Wildlife Parks*



All manner of fascinating marine life from beneath the waves is waiting to be discovered - a unique educational outing for visitors of all ages.

Scarborough, YO12 6RP, North  
Yorkshire, England

### 42. Scarborough Open Air Theatre

*Festivals and Events, Tours and Trips, Live Entertainment, Live Music and Comedy, Theatres*



Scarborough's Open Air Theatre is the largest in Europe and was re-opened in 2010 by Her Majesty the Queen. The stage is set on an island in the middle of a lake with fixed seating for the audience opposite; a spectacular venue and unique atmosphere

Scarborough, YO12 2HG, North  
Yorkshire, England

**Phone:** 01723 383636

### 43. Dalby Forest

*Parks Gardens and Woodlands*



Located in the North York Moors National Park, Dalby Forest provides a tranquil environment and extensive flora and fauna.

Yorkshire, YO18 7RT, North Yorkshire,  
England

### 44. Whitby Abbey

*Historic Buildings and Monuments*



Standing tall above the old whaling town of Whitby, the ruins of the Abbey are a reminder of the town's cultural and religious significance.

Whitby, YO22 4DP, North Yorkshire, England

#### 45. Bempton Cliffs

*Nature Reserve, Zoos Farms and Wildlife Parks*



The best place in England to see, hear and smell seabirds!

Bempton, YO15, East Yorkshire, England

#### 46. Trailways Cycle Hire

*Cycling and Mountain Bikes*



Bike hire & sales and self-catering railway carriage accommodation near the Hasker coastal biking route.

Whitby, YO22 4LB, East Yorkshire, England

#### 47. Heartbeat Country Goathland Village in North Yorkshire

*Visitor Centres and Museums*



Beautiful village in the North York Moors and the setting for *Heartbeat*;

Goathland, YO22 5, North Yorkshire, England

#### 48. John Bull's Candy Kingdom

*Indoor and Outdoor Play Areas*

Indoor Adventure Play Centre

Bridlington, YO15 3QY, East Yorkshire, England



#### More Information

For more information, you can find us under ref.nr. 90451 on LovetoEscape.com

[LovetoEscape.com/holiday-cottages/90451/11-highfield.htm](https://LovetoEscape.com/holiday-cottages/90451/11-highfield.htm)