

## The Stilehouse Apartment

**Contact Details:**

Daytime Phone: 01244 356890

Menith wood  
Worcestershire  
WR6 6UN  
England

**£ 332.00 - £ 818.00 per week**



**This first floor apartment set 8 miles from Bewdley in Worcestershire sleeps two people.**

**Facilities:**

- **Communications:**  
Broadband Internet
- **Entertainment:**  
TV
- **Kitchen:**  
Cooker, Fridge
- **Price Included:**  
Linen, Towels

**Room Details:**

**Sleeps: 2**

**2 Single Rooms**

**1 Twin Room**

**1 Bathroom**

**About Menith wood and Worcestershire**

Bewdley is a market town set on the banks of the River Severn. Located close to the Wyre Forest, the town offers pubs, cafes, restaurants, shops, antique and craft galleries. There are many attractions in the area, which suit all tastes, including the Severn Valley Steam Railway, West Midlands Safari Park and numerous National Trust properties.

## Recommended Attractions

### 1. Goodwood

*Art Gallery, Historic Buildings and Monuments, Nature Reserve, Parks Gardens and Woodlands, Tours and Trips, Visitor Centres and Museums, Childrens Attractions, Zoos Farms and Wildlife Parks, Bistros and Brasseries, Cafes Coffee Shops and Tearooms, Horse Riding and Pony Trekking, Shooting and Fishing, Walking and Climbing*



Motor circuit, Stately Home, Racecourse, Aerodrome, Forestry, Organic Farm Shop, Festival of Speed, Goodwood Revival

Chichester, PO18 0PX, West Sussex, England

### 2. Goodwood Races

*Festivals and Events, Horse Racing*



Under the family of the Duke of Richmond, Goodwood Races sits only five miles north of the town of Chichester.

Chichester, PO18 0PS, West Sussex, England

### 3. Arundel Castle and Gardens

*Historic Buildings and Monuments, Parks Gardens and Woodlands*



This converted Castle and Stately Home is over 1000 years old, and sits on the bank of the River Arun in West Sussex

Arundel, BN18 9AB, West Sussex, England

### 4. Chichester Cathedral

*Historic Buildings and Monuments, Tours and Trips*



This 900 Year Old Cathedral has been visited millions of times by people of all faiths and denominations.

Chichester, PO19 1PX, West Sussex, England

### 5. Petworth House

*Historic Buildings and Monuments, Parks Gardens and Woodlands*



Petworth House is a grade 1 listed building from the 17th Century. Set in an idyllic 700-acre Deer Park, it makes a great day out for viewing the historic building and walking in the verdant park surrounding it.

Petworth, GU28 0AE, West Sussex, England

## 6. Bucklers Hard

*Visitor Centres and Museums, Childrens Attractions*



Bucklers Hard is a 18th century maritime village which is situated on the Beaulieu River, it has a stunning Marina and plenty to see in the village.

Brockenhurst, SO42 7XB, Hampshire, England

## 7. Beaulieu Estate

*Historic Buildings and Monuments, Visitor Centres and Museums, Childrens Attractions*



Beaulieu is situated in the New Forest National Park, it is the perfect place for a fun day including museums, the historic abbey and the list goes on

Brockenhurst, SO42 7ZN, Hampshire, England

## 8. Paultons Park

*Theme Parks*



Paultons Family Theme Park is a great day out, there are a wide selection of rides allowing you to have the most fun and exciting day out.

The New Forest, SO51 6AL, Hampshire, England

## 9. Dunster Castle

*Historic Buildings and Monuments, Parks Gardens and Woodlands*



National Trust Property with subtropical terraced garden

Dunster, TA24 6SL, Somerset, England

 **Highly Recommended by The Stilehouse Apartment!**

## 10. Lynton and Barnstaple Railway

*Tours and Trips, Cafes Coffee Shops and Tearooms, Railways*



A restored narrow gauge steam railway in the Exmoor National Park area of North Devon. One mile of the original 19 miles has so far been re-opened.

Martinhoe Cross, Parracombe, EX31 4RA, Devon, England

**Phone:** 01598 763487

 **Highly Recommended by The Stilehouse Apartment!**


## 11. Exmoor National Park

*Parks Gardens and Woodlands, Horse Riding and Pony Trekking, Shooting and Fishing, Walking and Climbing*



Beautiful national park spanning Somerset and Devon

Dulverton, TA22 9HL, Somerset, England

 **Highly Recommended by The Stilehouse Apartment!**

---

## 12. Quince Honey Farm

*Visitor Centres and Museums, Childrens Attractions, Zoos Farms and Wildlife Parks, Shops*



World famous honey farm - the largest in the country

South Molton, EX36 3AZ, Devon, England

 **Highly Recommended by The Stilehouse Apartment!**

---


## 13. h2outdoor Adventure Activities North Devon

*Tours and Trips, Cycling and Mountain Bikes, Horse Riding and Pony Trekking, Sailing and Watersports, Walking and Climbing, Guided Walks, Guided Tours and Day Trips*



A fantastic selection of adventure activities in North Devon. Sea kayaking, canoeing, surfing, coasteering, mountain biking, pony trekking & high ropes are just some of the activities we offer. Suitable for children, groups, stag/hen & corporate

Woolacombe, EX34 7BZ, Devon, England

 **Highly Recommended by The Stilehouse Apartment!**

---


## 14. Horse riding holidays in North Devon Croyde

*Childrens Attractions, Horse Riding and Pony Trekking*



Roylands riding stables cater for all abilities and offer horse riding holidays.

Croyde, EX33, Devon, England

 **Highly Recommended by The Stilehouse Apartment!**

---

## 15. Saunton Sands Beach

*Beaches, Childrens Attractions, Sailing and Watersports*



3 miles long sandy beach, ideal for families and popular with surfers

Saunton, EX33, Devon, England

 **Highly Recommended by The Stilehouse Apartment!**

---

### 16. Westward Ho! Beach

*Beaches, Childrens Attractions*

Over 2 miles of sandy beach in North Devon

Westward Ho, TQ1 , Devon, England



 **Highly Recommended by The Stilehouse Apartment!**

### 17. Lundy Island

*Beaches, Tours and Trips, Childrens Attractions, Pubs and Bars, Walking and Climbing*

Lundy Island and Nature Reserve

Bideford, EX39 2LY, Devon, England



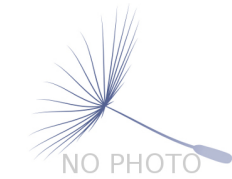
 **Highly Recommended by The Stilehouse Apartment!**

### 18. The Milky Way Adventure Park

*Visitor Centres and Museums, Childrens Attractions, Indoor and Outdoor Play Areas*

North Devon's largest undercover family attraction.

Bideford, EX39 5RY, Devon, England



 **Highly Recommended by The Stilehouse Apartment!**


### 19. Babbacombe Model Village

*Childrens Attractions*

Thousands of miniature buildings, people and vehicles capture the essence of England's past, present and future

Babbacombe, TQ1 3LA, Devon, England



 **Highly Recommended by The Stilehouse Apartment!**


### 20. Blackpool Sands Beach Devon

*Beaches, Childrens Attractions, Cafes Coffee Shops and Tearooms, Shops, Sailing and Watersports*



Award-winning family beach with turquoise blue sea giving it an almost Mediterranean feel.

Dartmouth, TQ6 0RG, Devon, England

 **Highly Recommended by The Stilehouse Apartment!**

---

## 21. Slapton Sands and Torcross

*Beaches, Childrens Attractions, Sailing and Watersports*



Fantastic pebble beach in Devon

Slapton, TQ6, Devon, England

 **Highly Recommended by The Stilehouse Apartment!**

---

## 22. Tintagel and Tintagel Castle

*Beaches, Historic Buildings and Monuments, Lochs Lakes and Waterfalls, Parks Gardens and Woodlands, Visitor Centres and Museums, Childrens Attractions, Cafes Coffee Shops and Tearooms, Pubs and Bars, Shops*



Breathtaking ruined castle on the Cornish Coast - mythical home of King Arthur

Tintagel, PL34, Cornwall, England

 **Highly Recommended by The Stilehouse Apartment!**

---

## 23. Lanhydrock

*Historic Buildings and Monuments, Parks Gardens and Woodlands, Visitor Centres and Museums, Childrens Attractions, Indoor and Outdoor Play Areas, Cafes Coffee Shops and Tearooms, Restaurants*



Magnificent late Victorian country house with extensive servants' quarters, gardens and wooded estate

Bodmin, PL30 5AD, Cornwall, England

 **Highly Recommended by The Stilehouse Apartment!**

---

## 24. Newquay Zoo

*Zoos Farms and Wildlife Parks*



One of the nations's best zoos, home of many of the world's endangered species.

Newquay, TR7 2LZ, Cornwall, England

 **Highly Recommended by The Stilehouse Apartment!**

---



## 25. Lost Gardens of Heligan

*Parks Gardens and Woodlands*



One of the most popular botanical gardens in the UK

St Austell, PL26 6EN, Cornwall, England

*"A great day out for everyone. Highly recommended by us as a family. Plenty of space for kids to run around. Beautiful gardens and walks."*

 **Highly Recommended by The Stilehouse Apartment!**


## 26. Fistral Beach

*Beaches, Sailing and Watersports*



World Famous surfing Beach in Newquay, Cornwall

Newquay, Cornwall, Cornwall, England

 **Highly Recommended by The Stilehouse Apartment!**

## 27. The Cross Keys Restaurant in Kippen


*Pubs and Bars, Restaurants*



Traditional and comfortable inn situated in the village of Kippen, Stirlingshire. We serve food all day from soups to sirloins, with home made pies and puddings to finish. Every Sunday is roast day featuring two types of roast. Children Welcome.

Kippen, FK8 3DN, Stirlingshire, Scotland

**Phone:** 01786 870293

 **Highly Recommended by The Stilehouse Apartment!**

## 28. The Black Watch Museum

*Visitor Centres and Museums*



Regimental Museum of the Proud and Illustrious Black Watch Regiment in Perth Scotland

Perth, PH1 5HR, Perth and Kinross, Scotland

 **Highly Recommended by The Stilehouse Apartment!**

## 29. Gloagburn Farm Shop and Coffee Shop near Perth

*Cafes Coffee Shops and Tearooms, Shops*



The Gloagburn Farm Shop and Café are a local business of high quality offering local produce as well as a café.

Tibbermore, PH1 1QL, Perth and Kinross, Scotland

**Highly Recommended by The Stilehouse Apartment!**

### 30. Scone Palace

*Historic Buildings and Monuments, Parks Gardens and Woodlands*



Scone Palace occupies a unique position in Scottish History

Perth, PH2 6BD, Perth and Kinross, Scotland

**Highly Recommended by The Stilehouse Apartment!**

### 31. Scone Palace

*Historic Buildings and Monuments, Parks Gardens and Woodlands*



Former crowning place of the Kings of Scotland, stunning setting in beautiful grounds. A stately home to visit.

Perth, PH2 6BD, Perth and Kinross, Scotland

**Highly Recommended by The Stilehouse Apartment!**

### 32. Glamis Castle

*Historic Buildings and Monuments*



Childhood home of Her Majesty Queen Elisabeth The Queen Mother

Glamis, DD8 1RJ, Angus and Dundee, Scotland

**Highly Recommended by The Stilehouse Apartment!**

### 33. The Scottish Crannog Centre

*Historic Buildings and Monuments, Visitor Centres and Museums*



Archaeological Open-Air Museum

Kenmore Aberfeldy, PH15 2HY, Perth and Kinross, Scotland

**Highly Recommended by The Stilehouse Apartment!**

### 34. Enchanted Forest in Perthshire

*Festivals and Events, Lochs Lakes and Waterfalls, Parks Gardens and Woodlands, Live Music and Comedy*





The Enchanted Forest offers visitors a unique opportunity to experience the outdoors, at night and with spectacular imagery. You will experience a lighting show that is out of this world.

Pitlochry, PH16 5LA, Perth and Kinross, Scotland

**Highly Recommended by The Stilehouse Apartment!**

### 35. Blair Castle

*Historic Buildings and Monuments, Parks Gardens and Woodlands, Cafes Coffee Shops and Tearooms*



Historic Castle

Blair Atholl, PH18 5TL, Perth and Kinross, Scotland

**Highly Recommended by The Stilehouse Apartment!**

### 36. Balmoral Castle

*Historic Buildings and Monuments, Parks Gardens and Woodlands, Visitor Centres and Museums*



5 Star visitor attraction set amongst the magnificent scenery of Royal Deeside

Balmoral, AB35 5TB, Aberdeenshire, Scotland

**Highly Recommended by The Stilehouse Apartment!**

### 37. Dunrobin Castle Golspie Sutherland

*Historic Buildings and Monuments, Visitor Centres and Museums*



Seat of the Duke of Sutherland. Originally built in 1401 and rebuilt in 1835. Castle Tour and Falconry Displays a Must. Open between April and Oct

Golspie, KW10 6RS, The Highlands, Scotland

*"Castle of fairy tales which looks dramatic from the sea. Falconry display and museum worth visiting too."*

**Highly Recommended by The Stilehouse Apartment!**

### 38. Brora golf club

Golf



Brora Golf Club, a traditional links course, designed by James Braid, where little has changed since he left in 1923.

Brora, KW9 6QS, The Highlands, Scotland

*"Wonderful Braid course in top 100 best courses UK and Ireland."*

**Highly Recommended by The Stilehouse Apartment!**

### 39. Loch Venachar

*Lochs Lakes and Waterfalls*



Loch Venachar, The Trossachs

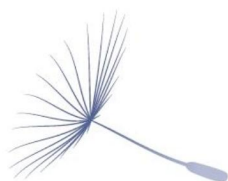
Callander, FK8 3EN, Stirlingshire,  
Scotland

*"There is a great walk down the southside of the Loch leading past the sailing club and if you branch right you can reach the Byre Inn."*

By The Stilehouse Apartment

### 40. Brockhampton Estate

*Historic Buildings and Monuments, Parks Gardens and Woodlands, Cafes Coffee Shops and Tearooms*



Traditionally farmed estate and medieval manor house

Bringsty, WR6 5TB, Herefordshire,  
England

### 41. King's Camps - children's sport and activity camps

*Childrens Attractions, Indoor and Outdoor Play Areas*



King's Camps is a week of fun, sport and activity for 4-17s at the University of Worcester during the summer holidays.

Worcester, WR2 6AJ, Worcestershire,  
England

### 42. Ludlow Castle

*Historic Buildings and Monuments, Parks Gardens and Woodlands*



The finest of medieval ruined castles, set in glorious Shropshire countryside, at the heart of this superb, bustling black & white market town.

Ludlow, SY8 1AY, Shropshire, England

### 43. Hampton Court Country House in Herefordshire

*Historic Buildings and Monuments, Parks Gardens and Woodlands*



Country House with beautiful gardens including a fantastic maze for children. Superb tea rooms serving homemade lunches cakes.

Leominster, HR6 0PN, Herefordshire,  
England

**44. Savery's Licensed Cafe***Cafes Coffee Shops and Tearooms, Restaurants*

From breakfast, home made lunches to afternoon tea 7 days a week the place to visit

Leominster, HR68BS, Herefordshire, England

**45. Queenswood Country Park Herefordshire***Lochs Lakes and Waterfalls, Parks Gardens and Woodlands, Visitor Centres and Museums, Cafes Coffee Shops and Tearooms, Walking and Climbing*

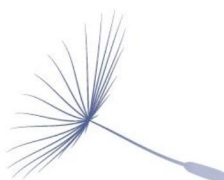
103 acre arboretum with over 500 rare and exotic trees.Licensed cafe.Easy access footpaths and trails.Electric mobility vehicle.Woodland play area.

Leominster, HR6 0PY, Herefordshire, England

**46. Oaker Wood Leisure***Lochs Lakes and Waterfalls, Parks Gardens and Woodlands, Childrens Attractions, Indoor and Outdoor Play Areas, Cycling and Mountain Bikes, Sailing and Watersports, Shooting and Fishing, Walking and Climbing*

Specialist Outdoor Activity site set in 175 acres of woodland with two lakes. Activities include Paintball, Quad Bikes, High Rope Trekking, Low Rope Challenge, Raft Building, Clay Pigeon Shooting & Inflatables

Leominster, HR6 9PT, Herefordshire, England

**47. Croome Park***Parks Gardens and Woodlands, Visitor Centres and Museums, Cafes Coffee Shops and Tearooms*

Magnificent landscape park restored to its former glory

Croome DAbiot, WR8 9JS, Worcestershire, England

**48. Eastnor Pottery & The Flying Potter***Art Gallery, Childrens Attractions*

Remarkable pottery experiences for groups and individuals, all ages, all abilities. Bespoke sessions are designed to explore and develop creativity vi

Ledbury, HR8 1RD, Herefordshire, England



### More Information

For more information, you can find us under ref.nr. 91995 on LovetoEscape.com

[LovetoEscape.com/holiday-cottages/91995/the-stilehouse-apartment.htm](https://LovetoEscape.com/holiday-cottages/91995/the-stilehouse-apartment.htm)